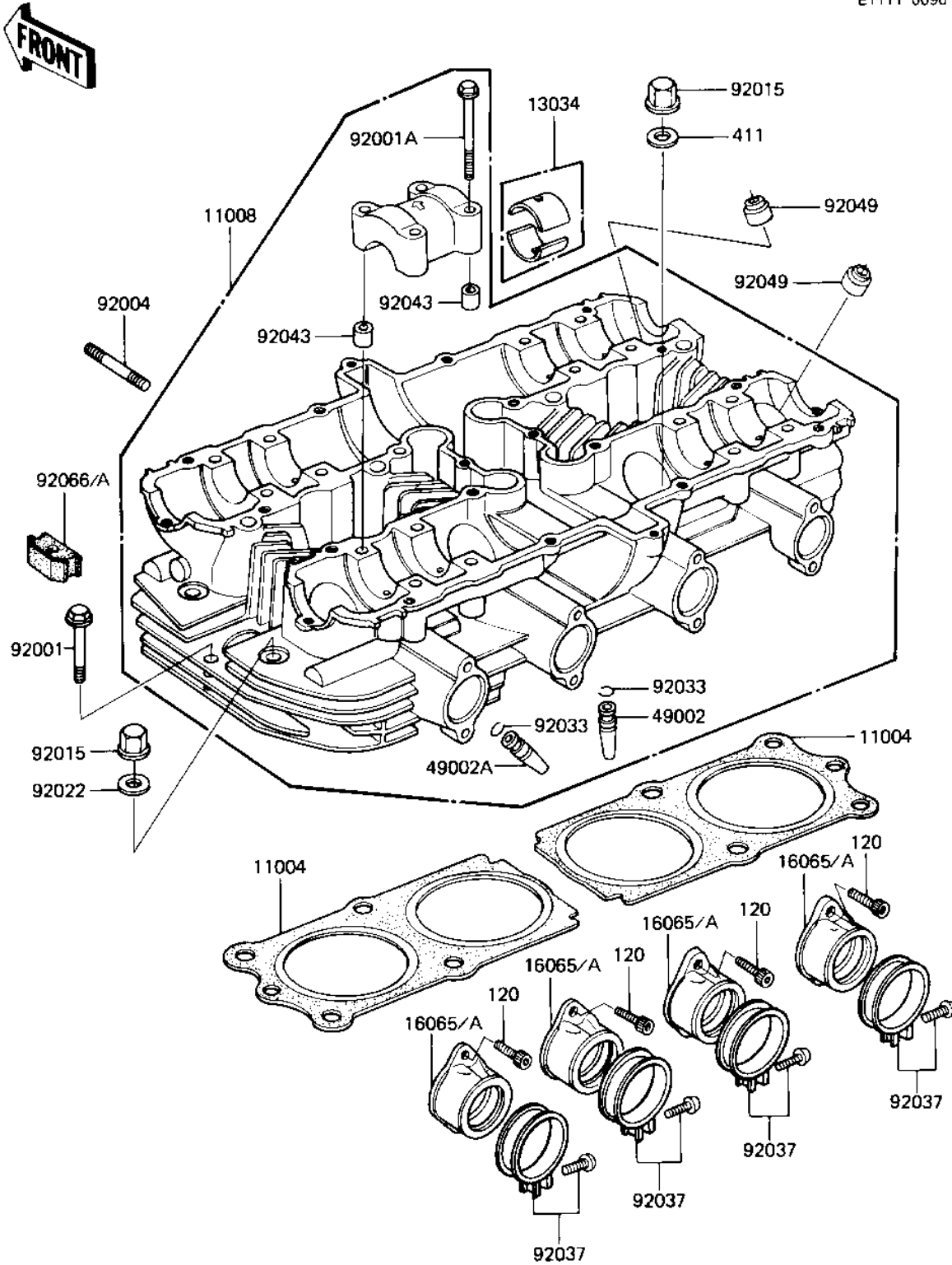


# 1983 Shaft

## PARTS DIAGRAM CYLINDER HEAD

E1111-0096



# 1983 Shaft

## PARTS LIST

### CYLINDER HEAD

| ITEM NAME                           | PART NUMBER | QUANTITY |
|-------------------------------------|-------------|----------|
| GASKET-HEAD,CYLINDER (Ref # 11004)  | 11004-1105  | 2        |
| HEAD-COMP-CYLINDER,WH (Ref # 11008) | 11008-1013  | 1        |
| BUSHING,CAMSHAFT (Ref # 13034)      | 13034-030   | 16       |
| HOLDER-CARBERTOR (Ref # 16065A)     | 16065-1131  | 4        |
| GUIDE,INLET VALVE (Ref # 49002)     | 12013-009   | 4        |
| GUIDE,EXHAUST VALVE (Ref # 49002A)  | 49002-1002  | 4        |
| BOLT,HEX HEAD,6X45 (Ref # 92001)    | 92003-092   | 2        |
| BOLT,6X43 (Ref # 92001A)            | 92002-1881  | 16       |
| STUD,8X30 (Ref # 92004)             | 92004-1069  | 8        |
| NUT,CYLINDER HEAD (Ref # 92015)     | 92015-076   | 12       |
| WASHER,10.5X22X1.6 (Ref # 92022)    | 92022-1005  | 4        |
| CIRCLIP-VALVE (Ref # 92033)         | 92036-023   | 8        |
| CLAMP,ID=53,BLACK (Ref # 92037)     | 92037-1304  | 4        |
| PIN-DOWEL (Ref # 92043)             | 92042-007   | 8        |
| OIL SEAL,RV37129.5 (Ref # 92049)    | 92049-016   | 8        |
| PLUG,CYLNDR HD COVER (Ref # 92066A) | 92066-1106  | 4        |
| BOLT-SOCKET,6X16,BLAC (Ref # 120)   | 120S0616    | 8        |
| WASHER PLAIN 10MM (Ref # 411)       | 411B1000    | 8        |