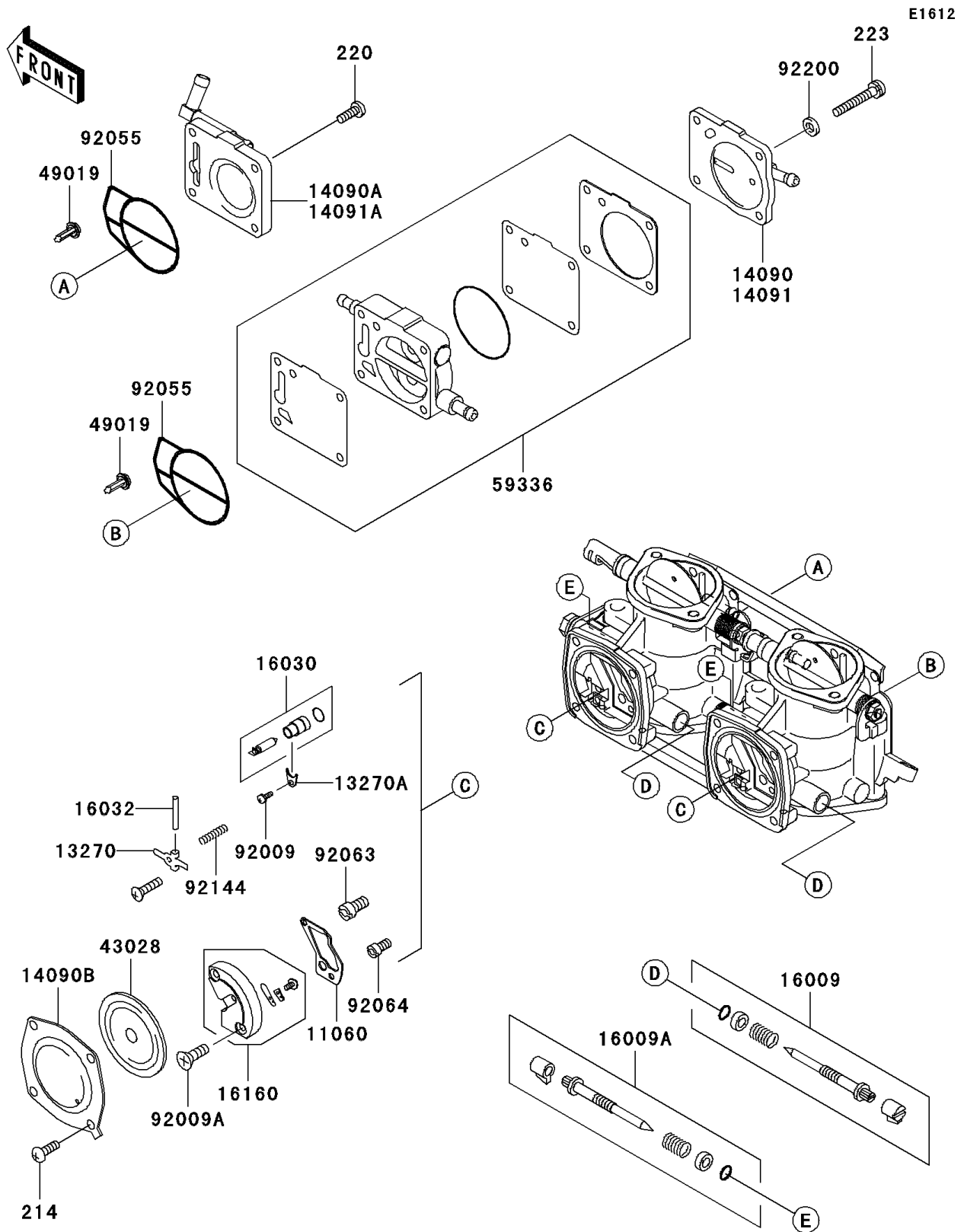


# 2005 800 SX-R

## PARTS DIAGRAM

### Carburetor Parts



# 2005 800 SX-R

## PARTS LIST

### Carburetor Parts

| ITEM NAME                         | PART NUMBER | QUANTITY |
|-----------------------------------|-------------|----------|
| SCREW-PAN+- (Ref # 214)           | 214R0510    | 8        |
| SCREW-PAN-CROS (Ref # 220)        | 220R0516    | 4        |
| SCREW-PAN-WS-CROS (Ref # 223)     | 223R0535    | 4        |
| GASKET (Ref # 11060)              | 11060-3774  | 2        |
| PLATE (Ref # 13270)               | 13270-3828  | 2        |
| PLATE (Ref # 13270A)              | 13270-3829  | 2        |
| COVER (Ref # 14090B)              | 14090-3785  | 2        |
| COVER (Ref # 14091)               | 14091-3774  | 1        |
| COVER (Ref # 14091A)              | 14091-3775  | 1        |
| NEEDLE-JET,SLOW (Ref # 16009)     | 16009-3717  | 2        |
| NEEDLE-JET,MAIN (Ref # 16009A)    | 16009-3718  | 2        |
| VALVE-FLOAT (Ref # 16030)         | 16030-3703  | 2        |
| PIN,FLOAT (Ref # 16032)           | 16032-006   | 2        |
| BODY (Ref # 16160)                | 16160-3737  | 2        |
| DIAPHRAGM (Ref # 43028)           | 43028-3709  | 2        |
| FILTER-FUEL (Ref # 49019)         | 49019-3713  | 2        |
| CASE-PUMP,DIAPHRAGM (Ref # 59336) | 59336-3712  | 1        |
| SCREW,3X7 (Ref # 92009)           | 92009-3821  | 2        |
| SCREW,4X14 (Ref # 92009A)         | 92009-3822  | 4        |
| RING-O (Ref # 92055)              | 92055-3745  | 2        |
| JET-MAIN,#132.5 (Ref # 92063)     | 92063-3724  | 2        |
| JET-PILOT,#72.5 (Ref # 92064)     | 92064-3704  | 2        |
| SPRING (Ref # 92144)              | 92144-3756  | 2        |
| WASHER,5.3X10X1.0 (Ref # 92200)   | 92200-3745  | 4        |