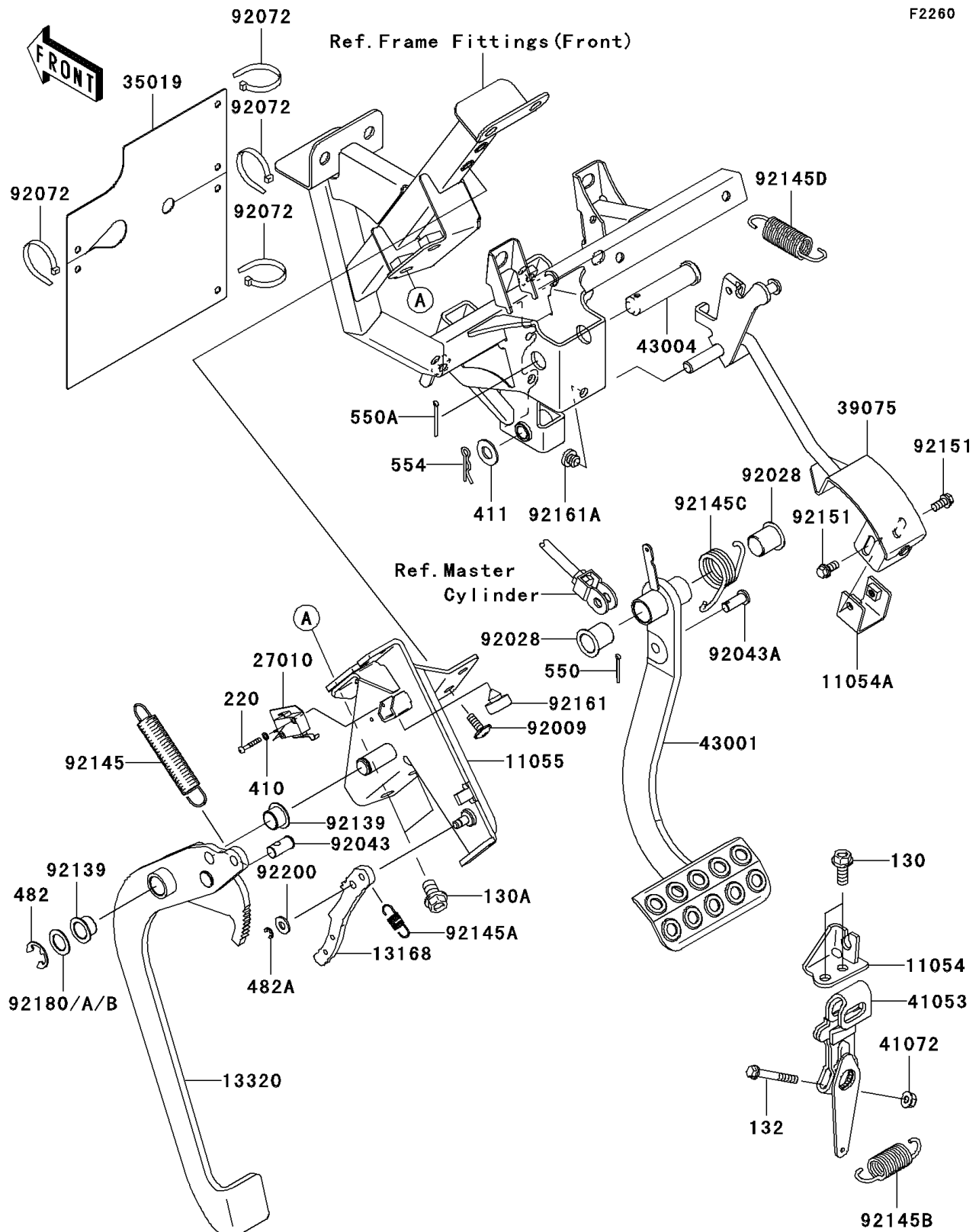


2008 Teryx[®] 750 4x4 NRA OUTDOORS[™]

PARTS DIAGRAM

Brake Pedal/Throttle Lever



2008 Teryx® 750 4x4 NRA OUTDOORS™

Kawasaki
Let the Good Times Roll®

PARTS LIST

Brake Pedal/Throttle Lever

| ITEM NAME | PART NUMBER | QUANTITY |
|--------------------------------------|-------------|----------|
| BOLT-FLANGED,8X20 (Ref # 130) | 130BB0820 | 2 |
| BOLT-FLANGED,10X16 (Ref # 130A) | 130BB1016 | 2 |
| BOLT-FLANGED-SMALL,6X40 (Ref # 132) | 132BA0640 | 1 |
| SCREW-PAN-CROSS,3X20 (Ref # 220) | 220AA0320 | 2 |
| WASHER-PLAIN-SMALL,3MM (Ref # 410) | 410AA0300 | 2 |
| WASHER-PLAIN,10MM (Ref # 411) | 411AA1000 | 1 |
| CIRCLIP-TYPE-E,10MM (Ref # 482) | 482J0100 | 1 |
| CIRCLIP-TYPE-E,4MM (Ref # 482A) | 482J4000 | 1 |
| PIN-COTTER,2.5X18 (Ref # 550) | 550AA2518 | 1 |
| PIN-COTTER,2.5X25 (Ref # 550A) | 550AA2525 | 1 |
| BRACKET,BRAKE CABLE (Ref # 11054) | 11054-0933 | 1 |
| BRACKET (Ref # 11054A) | 11054-1137 | 1 |
| BRACKET,BRAKE LEVER (Ref # 11055) | 11055-0279 | 1 |
| LEVER (Ref # 13168) | 13168-0174 | 1 |
| LEVER-ASSY,BRAKE PEDAL (Ref # 13320) | 13320-0012 | 1 |
| SWITCH (Ref # 27010) | 27010-0084 | 1 |
| FLAP (Ref # 35019) | 35019-0079 | 1 |
| LEVER-THROTTLE (Ref # 39075) | 39075-0012 | 1 |
| LEVER-BRAKE CAM (Ref # 41053) | 41053-0010 | 1 |
| NUT,6MM (Ref # 41072) | 41072-007 | 1 |
| LEVER-BRAKE,PEDAL (Ref # 43001) | 43001-0103 | 1 |
| SHAFT-BRAKE (Ref # 43004) | 43004-1128 | 1 |
| SCREW,6X16 (Ref # 92009) | 92009-1621 | 2 |
| BUSHING (Ref # 92028) | 92028-1571 | 2 |
| PIN (Ref # 92043) | 92043-0124 | 1 |
| PIN (Ref # 92043A) | 92043-1039 | 1 |
| BAND,L=188 (Ref # 92072) | 92072-1239 | 4 |
| BUSHING (Ref # 92139) | 92139-0182 | 2 |
| SPRING (Ref # 92145) | 92145-0446 | 1 |

2008 Teryx[®] 750 4x4 NRA OUTDOORS™

Kawasaki
Let the Good Times Roll[®]

PARTS LIST

Brake Pedal/Throttle Lever

| ITEM NAME | PART NUMBER | QUANTITY |
|--|-------------|----------|
| SPRING (Ref # 92145A) | 92145-0447 | 1 |
| SPRING (Ref # 92145B) | 92145-0563 | 1 |
| SPRING,BRAKE PEDAL RETURN (Ref # 92145C) | 92145-0575 | 1 |
| SPRING (Ref # 92145D) | 92145-0636 | 1 |
| BOLT,6X12 (Ref # 92151) | 92151-1997 | 2 |
| DAMPER (Ref # 92161) | 92161-0590 | 1 |
| DAMPER (Ref # 92161A) | 92161-1084 | 1 |
| SHIM,T=0.8 (Ref # 92180) | 92180-0279 | AR |
| SHIM,T=1.0 (Ref # 92180A) | 92180-0281 | AR |
| SHIM,T=1.2 (Ref # 92180B) | 92180-0282 | AR |
| WASHER,6.5X14.5X1.5 (Ref # 92200) | 92200-3775 | 1 |
| PIN-SNAP,10MM (Ref # 554) | 554DA1000 | 1 |