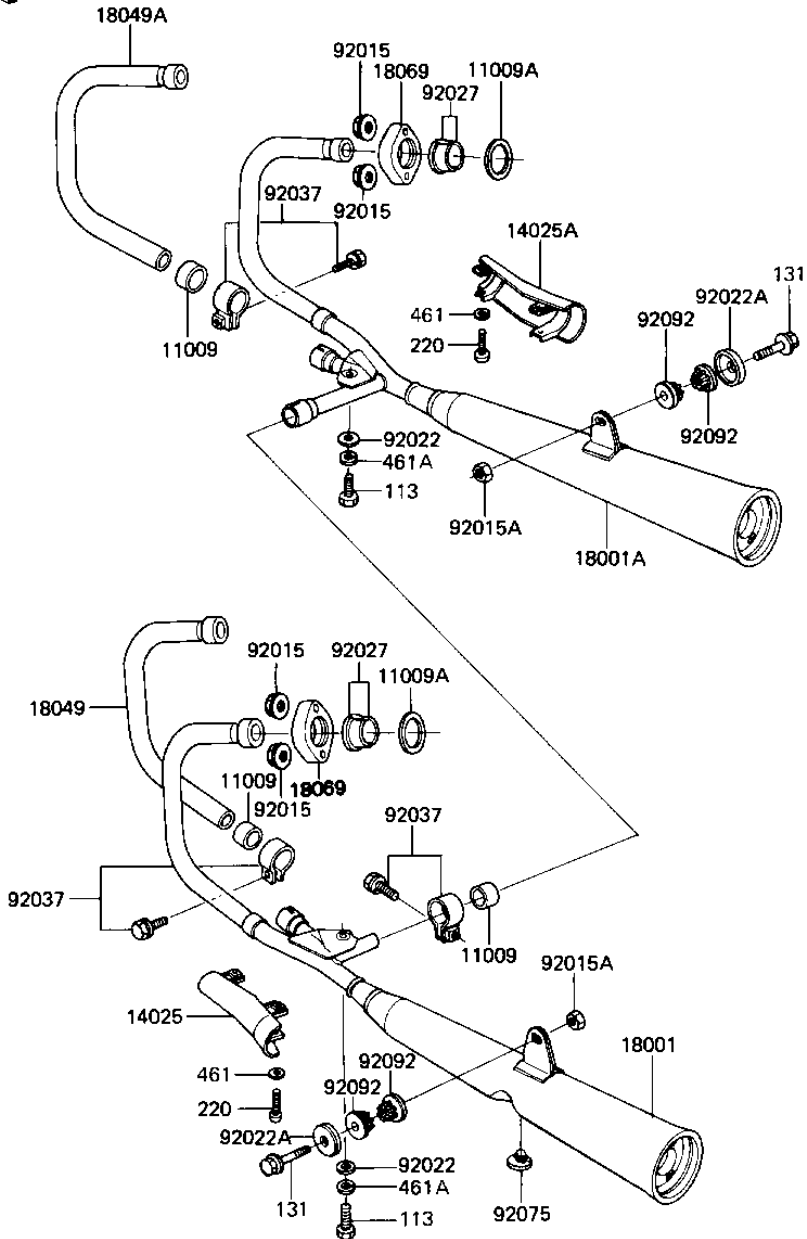


# 1983 LTD Shaft

## PARTS DIAGRAM

### MUFFLERS

E1140-0144



# 1983 LTD Shaft

## PARTS LIST

### MUFFLERS

| ITEM NAME                            | PART NUMBER | QUANTITY |
|--------------------------------------|-------------|----------|
| GASKET,MANIFOLD EXHAU (Ref # 11009)  | 11060-1068  | 3        |
| GASKET,EXHAUST PIPE H (Ref # 11009A) | 11009-1906  | 4        |
| COVER,MUFFLER,LH (Ref # 14025)       | 14025-1355  | 1        |
| COVER,MUFFLER,RH (Ref # 14025A)      | 14025-1356  | 1        |
| MUFFLER L.H. (Ref # 18001)           | 18001-1468  | 1        |
| MUFFLER R.H. (Ref # 18001A)          | 18001-1469  | 1        |
| PIPE-EXHAUST,#2 (Ref # 18049)        | 18049-1188  | 1        |
| PIPE-EXHAUST,#3 (Ref # 18049A)       | 18049-1189  | 1        |
| HOLDER-EXHAUST PIPE (Ref # 18069)    | 18069-1015  | 4        |
| NUT-8MM (Ref # 92015)                | 92015-1143  | 8        |
| NUT,LOCK,10MM (Ref # 92015A)         | 92019-021   | 2        |
| WASHER,PLAIN (Ref # 92022)           | 92022-1022  | 2        |
| WASHER,CUP TYPE,BLACK (Ref # 92022A) | 92022-1313  | 2        |
| COLLAR,EXHAUST PIPE,B (Ref # 92027)  | 92027-1457  | 8        |
| CLAMP,MUFFLER (Ref # 92037)          | 92037-1258  | 3        |
| DAMPER RUBBER,MAIN ST (Ref # 92075)  | 92075-1002  | 1        |
| BUSHING-RUBBER (Ref # 92092)         | 92092-1013  | 4        |
| BOLT HEX HEAD 10X80 (Ref # 113)      | 113B1080    | 2        |
| BOLT-FLANGED,10X55 (Ref # 131)       | 131J1055    | 2        |
| SCREW PAN HEAD 6X45 (Ref # 220)      | 220B0645    | 4        |
| WASHER SPRING 6MM (Ref # 461)        | 461F0600    | 4        |
| WASHER SPRING 10MM (Ref # 461A)      | 461F1000    | 2        |