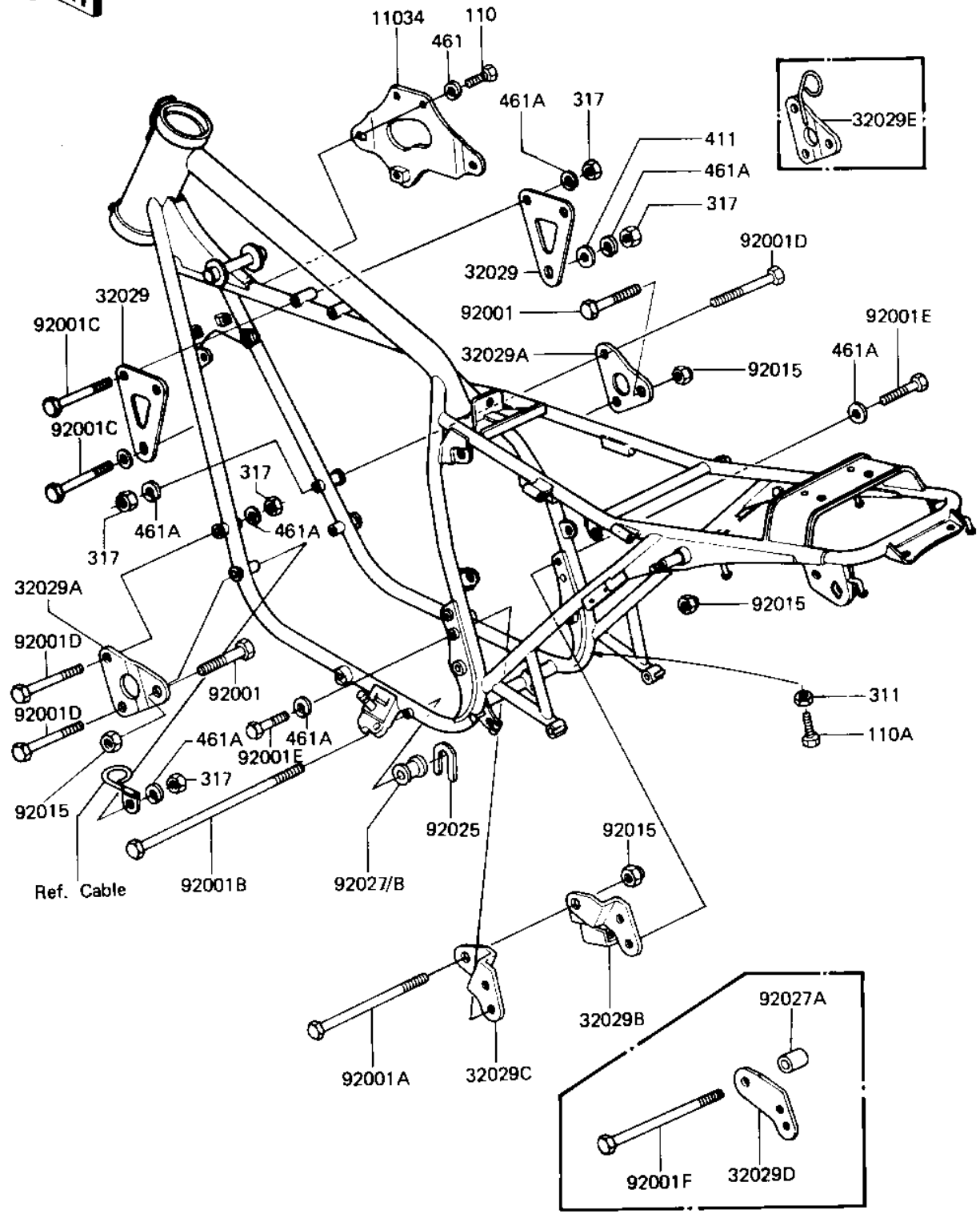


1981 LTD Belt

PARTS DIAGRAM

FRAME FITTINGS ('81-'83 D2/D3/D4/D5)

F 2131-0036



- 1
- 3
- 3
- 3
- 3
- 3
- 3
- 9
- 9
- 9
- 9
- 9
- 9
- 9
- 9
- 9
- 9
- 9
- 9
- 9

1981 LTD Belt

PARTS LIST

FRAME FITTINGS ('81-'83 D2/D3/D4/D5)

ITEM NAME	PART NUMBER	QUANTITY
BRACKET,IGNITION COIL (Ref # 11034)	11034-1938	1
BRACKET,ENGINE,HEAD (Ref # 32029)	32029-1097	2
BRACKET,ENGINE,FRONT (Ref # 32029A)	32029-1098	2
BRACKET,ENG,REAR,R.H. (Ref # 32029B)	32029-1099	1
BRACKET,ENG REAR,L.H. (Ref # 32029C)	32029-1100	1
BOLT,HEX HEAD,10X50 (Ref # 92001)	92001-1254	2
BOLT,HEX HEAD,10X200 (Ref # 92001A)	92001-1260	1
BOLT,10X300,REAR LOWR (Ref # 92001B)	92001-1272	1
BOLT,FLANGED,8X60 (Ref # 92001C)	92001-1581	3
BOLT-FLANGE (Ref # 92001D)	92001-1582	4
BOLT,FLANGED,8X35 (Ref # 92001E)	92001-1577	4
NUT,10MM (Ref # 92015)	92015-1429	4
SHIM-ENG FIT FR,0.5MM (Ref # 92025)	92025-053	AR
COLLAR,ENG MOUNTING (Ref # 92027)	92027-160	1
COLLAR (Ref # 92027B)	92027-250	1
BOLT-UPSET 6X14 (Ref # 110)	112B0614	2
BOLT-UPSET,6X20 (Ref # 110A)	112G0620	1
NUT 6MM (Ref # 311)	311B0600	1
NUT,8M/M (Ref # 317)	317B0800	7
WASHER PLAIN 8MM (Ref # 411)	411B0800	2
WASHER SPRING 6MM (Ref # 461)	461F0600	2
WASHER SPRING 8MM (Ref # 461A)	461F0800	11