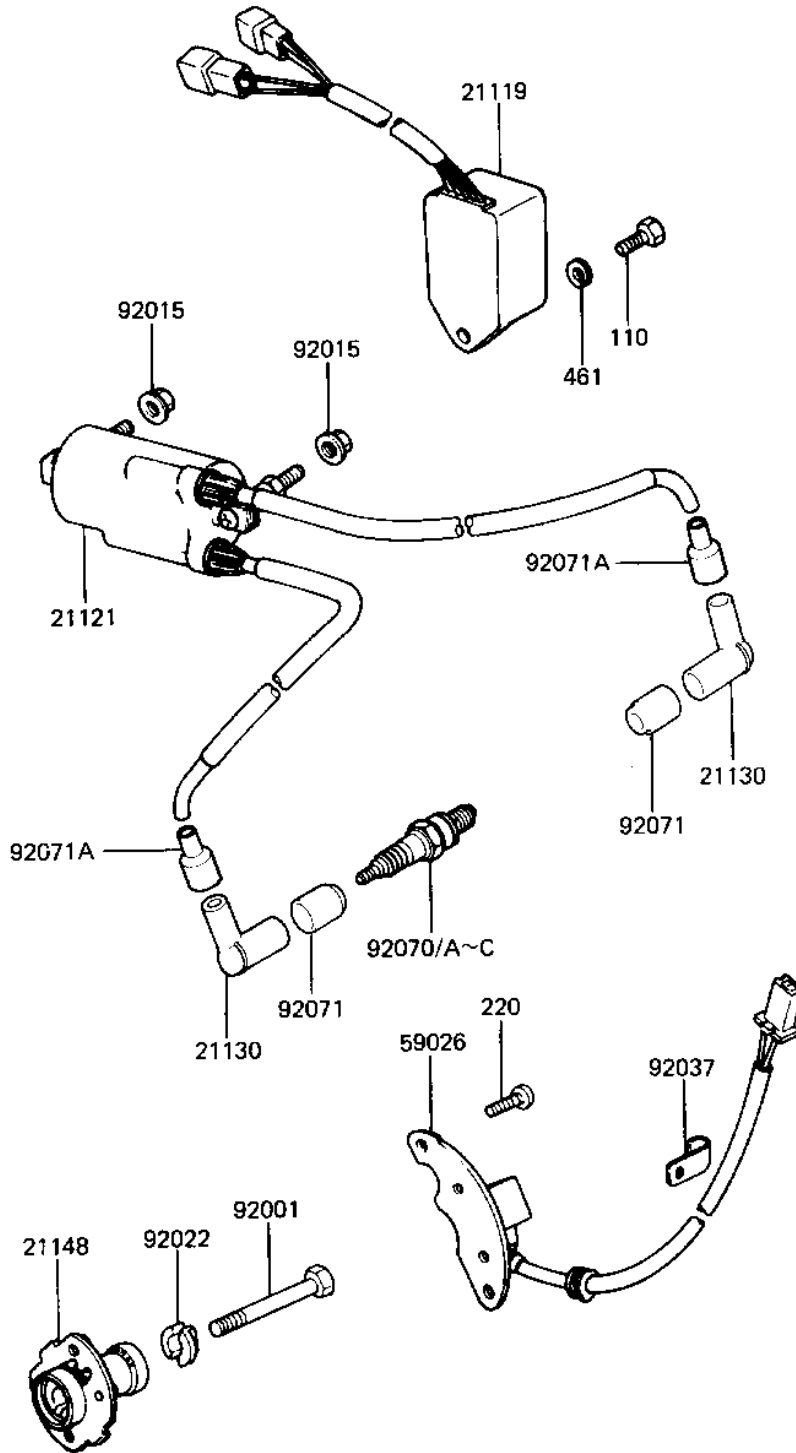


1981 LTD Belt

PARTS DIAGRAM

IGNITION ('81-'83 D2/D3/D4/D5)

E1830-0018



1
2
3
4
5
6
7
8
9
10
11
12
13
14
15
16
17
18
19
20
21
22
23
24
25
26
27
28
29
30
31
32
33
34
35
36
37
38
39
40
41
42
43
44
45
46
47
48
49
50
51
52
53
54
55
56
57
58
59
60
61
62
63
64
65
66
67
68
69
70
71
72
73
74
75
76
77
78
79
80
81
82
83
84
85
86
87
88
89
90
91
92
93
94
95
96
97
98
99
100

1981 LTD Belt

PARTS LIST

IGNITION ('81-'83 D2/D3/D4/D5)

ITEM NAME	PART NUMBER	QUANTITY
IGNITER (Ref # 21119)	21119-1022	1
COIL-IGNITION (Ref # 21121)	21121-1041	1
CAP-SPARK PLUG,RTFM20 (Ref # 21130)	21130-1007	2
GOVERNOR-BREAKER (Ref # 21148)	21148-1021	1
COIL-PULSING (Ref # 59026)	59026-1010	1
BOLT-8X63 (Ref # 92001)	92001-1397	1
NUT-6MM (Ref # 92015)	92015-1078	2
WASHER,SPARK ADVANCER (Ref # 92022)	92022-244	1
CLAMP,WIRING HARNESS (Ref # 92037)	21126-008	1
SPARK PLUG B7ES (Ref # 92070)	B7ES	2
SPARK PLUG BR7ES (Canada) (Ref # 92070B)	92070-1035	2
GROMMET-PLUG CAP,A (Ref # 92071)	21131-004	2
GROMMET,SPARK PLG CAP (Ref # 92071A)	21132-005	2
BOLT-UPSET,6X16 (Ref # 110)	112G0616	1
SCREW PAN HEAD 5X12 (Ref # 220)	220B0512	2
WASHER SPRING 6MM (Ref # 461)	461F0600	1