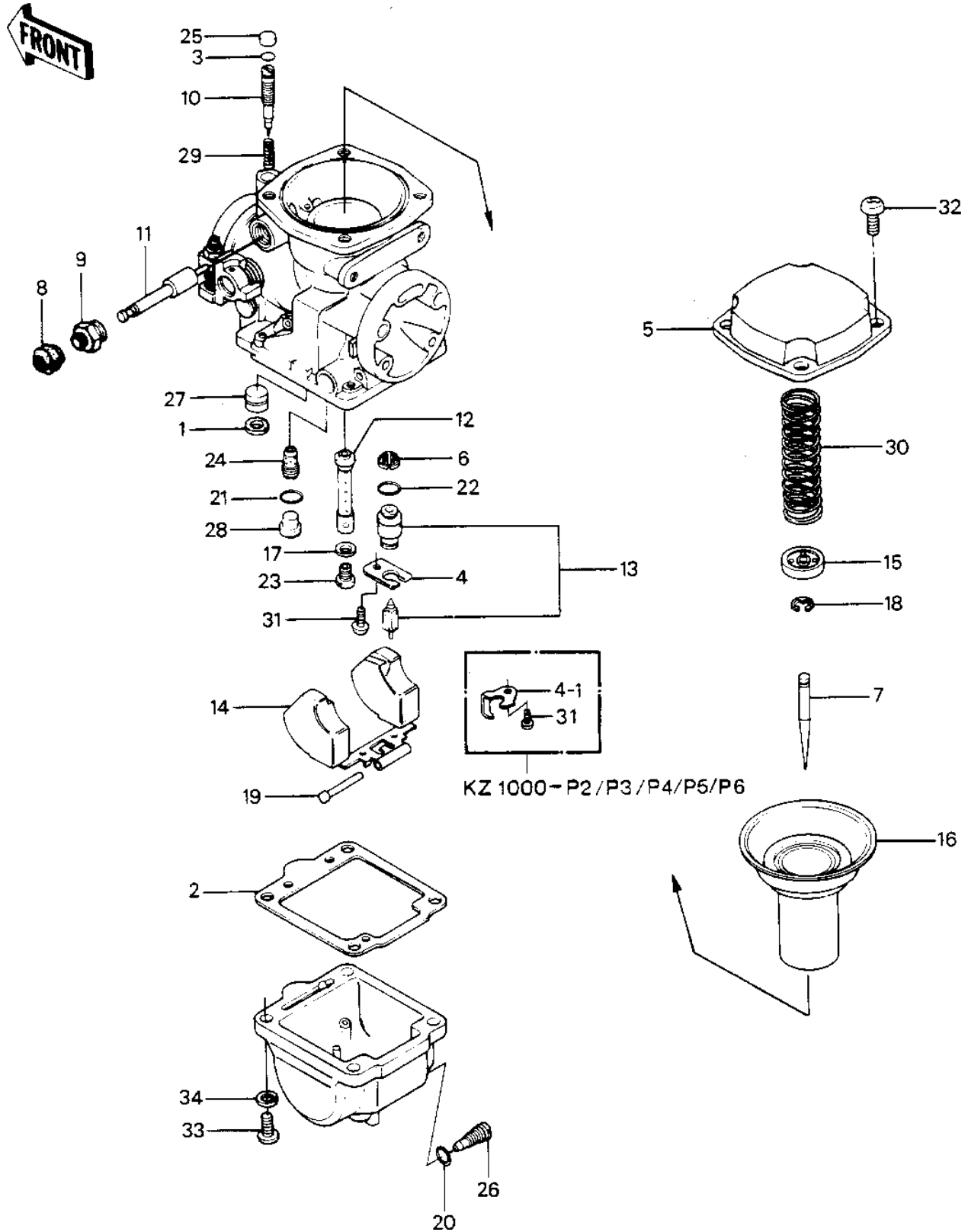


# 1984 Police 1000

## PARTS DIAGRAM CARBURETOR PARTS



# 1984 Police 1000

## PARTS LIST

### CARBURETOR PARTS

| ITEM NAME                       | PART NUMBER | QUANTITY |
|---------------------------------|-------------|----------|
| GASKET,CARB. PLUG (Ref # 1)     | 11009-1240  |          |
| GASKET,FLOAT CHAMBER (Ref # 2)  | 11009-1241  |          |
| "O" RING (Ref # 3)              | 16038-022   |          |
| PLATE, LOCK (Ref # 4)           | 13169-1190  |          |
| PLATE (Ref # 4-1)               | 13169-1482  |          |
| TOP-CHAMBER,MIXING (Ref # 5)    | 14025-1359  |          |
| COVER (Ref # 5)                 | 14025-1395  |          |
| FILTER,FLOAT VALVE (Ref # 6)    | 14043-1010  |          |
| NEEDLE-JET (Ref # 7)            | 16009-1085  |          |
| NEEDLE-JET,5GN45 (Ref # 7)      | 16009-1285  |          |
| CAP-STARTER PLUNGER (Ref # 8)   | 16012-1010  |          |
| CAP-STARTER PLUNGER (Ref # 9)   | 16012-1011  |          |
| SCREW-PILOT AIR (Ref # 10)      | 16014-1014  |          |
| PLUNGER (Ref # 11)              | 16016-1019  |          |
| JET-NEEDLE (Ref # 12)           | 16017-1086  |          |
| VALVE-FLOAT (Ref # 13)          | 16030-1016  |          |
| FLOAT (Ref # 14)                | 16031-1013  |          |
| PLATE,NEEDLE (Ref # 15)         | 16055-010   |          |
| DIAPHRAGM,VALVE (Ref # 16)      | 43028-1025  |          |
| VALVE,DIAPHRAGM (Ref # 16)      | 16126-1055  |          |
| VALVE,DIAPHRAGM (Ref # 16)      | 16126-1149  |          |
| WASHER MAIN JET (Ref # 17)      | 16034-001   |          |
| CIRCLIP (Ref # 18)              | 16008-014   |          |
| PIN,FLOAT (Ref # 19)            | 16032-008   |          |
| "O" RING (Ref # 20)             | 92055-044   |          |
| "O" RING,CHECK VALVE (Ref # 21) | 92055-1059  |          |
| "O" RING (Ref # 22)             | 92055-1105  |          |
| JET-MAIN,#A122.5 (Ref # 23)     | 92063-1101  |          |
| JET-MAIN,#A127.5 (Ref # 23)     | 92063-1100  |          |

# 1984 Police 1000

## PARTS LIST

### CARBURETOR PARTS

| ITEM NAME                      | PART NUMBER | QUANTITY |
|--------------------------------|-------------|----------|
| JET-MAIN,#117.5 (Ref # 23)     | 92063-1107  |          |
| JET-MAIN,#A120 (Ref # 23)      | 92063-1106  |          |
| JET-MAIN,#A125 (Ref # 23)      | 92063-1102  |          |
| JET-MAIN,#A130 (Ref # 23)      | 92063-1103  |          |
| JET-MAIN,#A132.5 (Ref # 23)    | 92063-1104  |          |
| JET-PILOT,#A37.5 (Ref # 24)    | 92064-1036  |          |
| PLUG,PILOT SCREW (Ref # 25)    | 92066-1051  |          |
| SCREW,DRAIN (Ref # 26)         | 92066-1064  |          |
| PLUG,CARBURETOR (Ref # 27)     | 92066-1086  |          |
| PLUG,PILOT JET (Ref # 28)      | 92066-1087  |          |
| SPRING,PILOT SCREW (Ref # 29)  | 16022-016   |          |
| SPRING,DPHRGM VALVE (Ref # 30) | 92081-1363  |          |
| SCREW PAN HEAD 4X6 (Ref # 31)  | 220B0406    |          |
| SCREW PAN HEAD 5X10 (Ref # 32) | 220B0510    |          |
| SCREW PAN HEAD 5X8 (Ref # 32)  | 220B0508    |          |
| SCREW-PAN-CROS (Ref # 33)      | 220B0514    |          |
| WASHER SPRING 5MM (Ref # 34)   | 461F0500    |          |
| SCREW-PAN-WS-CROS (Ref # 35)   | 223B0518    |          |