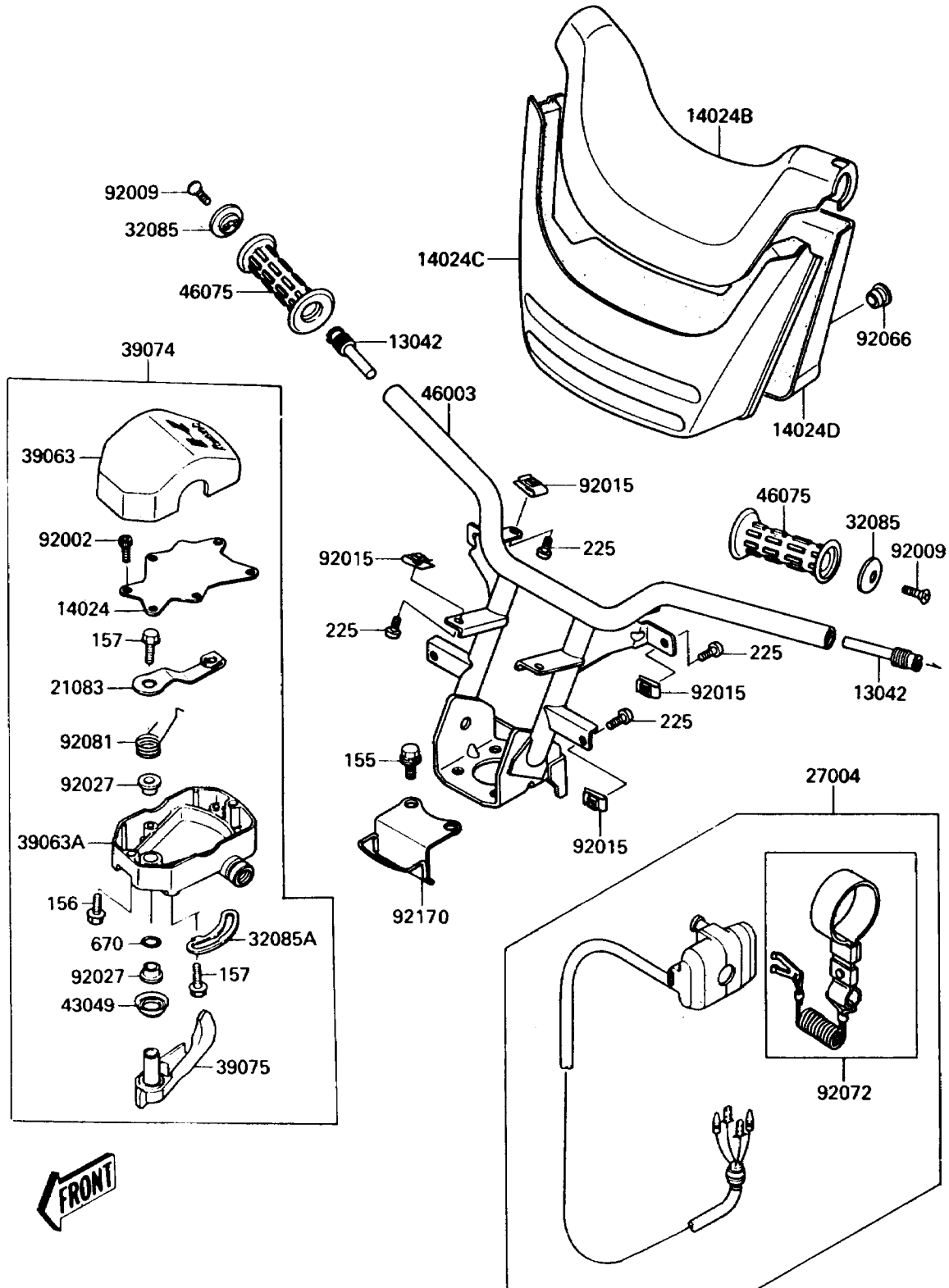


# 1989 TS

## PARTS DIAGRAM

### Handlebar

F 3172



# 1989 TS

## PARTS LIST

### Handlebar

ITEM NAME	PART NUMBER	QUANTITY
WEIGHT,HANDLE (Ref # 13042)	13042-3701	2
COVER,THROTTLE LEVER (Ref # 14024)	14024-3701	1
COVER,HANDLE,UPP,F.BLACK (Ref # 14024B)	14024-3775-21	1
COVER,HANDLE,FR,F.BLACK (Ref # 14024C)	14024-3776-21	1
COVER,HANDLE,RR,F.BLACK (Ref # 14024D)	14024-3777-21	1
ARM,THROTTLE LEVER (Ref # 21083)	21083-3701	1
SWITCH-ASSY (Ref # 27004)	27004-3709	1
STOPPER (Ref # 32085)	32085-3705	2
STOPPER (Ref # 32085A)	32085-3709	1
HOUSING-CONTROL,UPP (Ref # 39063)	39063-3703	1
HOUSING-CONTROL,LWR (Ref # 39063A)	39063-3707	1
LEVER-ASSY-THROTTLE (Ref # 39074)	39074-3711	1
LEVER-THROTTLE (Ref # 39075)	39075-3704	1
PACKING,THROTTLE LEVER (Ref # 43049)	43049-3701	1
HANDLE (Ref # 46003)	46003-3708	1
GRIP,HANDLEBAR (Ref # 46075)	46075-3713	2
BOLT,SOCKET,3X10 (Ref # 92002)	92002-3751	6
SCREW,6X16 (Ref # 92009)	92009-3703	2
NUT,5MM (Ref # 92015)	92015-3799	8
COLLAR,THROTTLE LEVER (Ref # 92027)	92027-3704	2
PLUG (Ref # 92066)	92066-3730	4
BAND,TETHER SWITCH (Ref # 92072)	92072-3734	1
SPRING,THROTTLE LEVER RETURN (Ref # 92081)	92081-3702	1
CLAMP,HARNESS&CABLE (Ref # 92170)	92170-3722	1
BOLT-WSP-SMALL,8X20 (Ref # 155)	155R0820	4
BOLT-WP,5X25 (Ref # 156)	156R0525	2
BOLT-WSP,5X12 (Ref # 157)	157R0512	2
SCREW-PAN-WSP-CROS,5X25 (Ref # 225)	225R0525	8
O RING,8MM (Ref # 670)	670B1508	1