

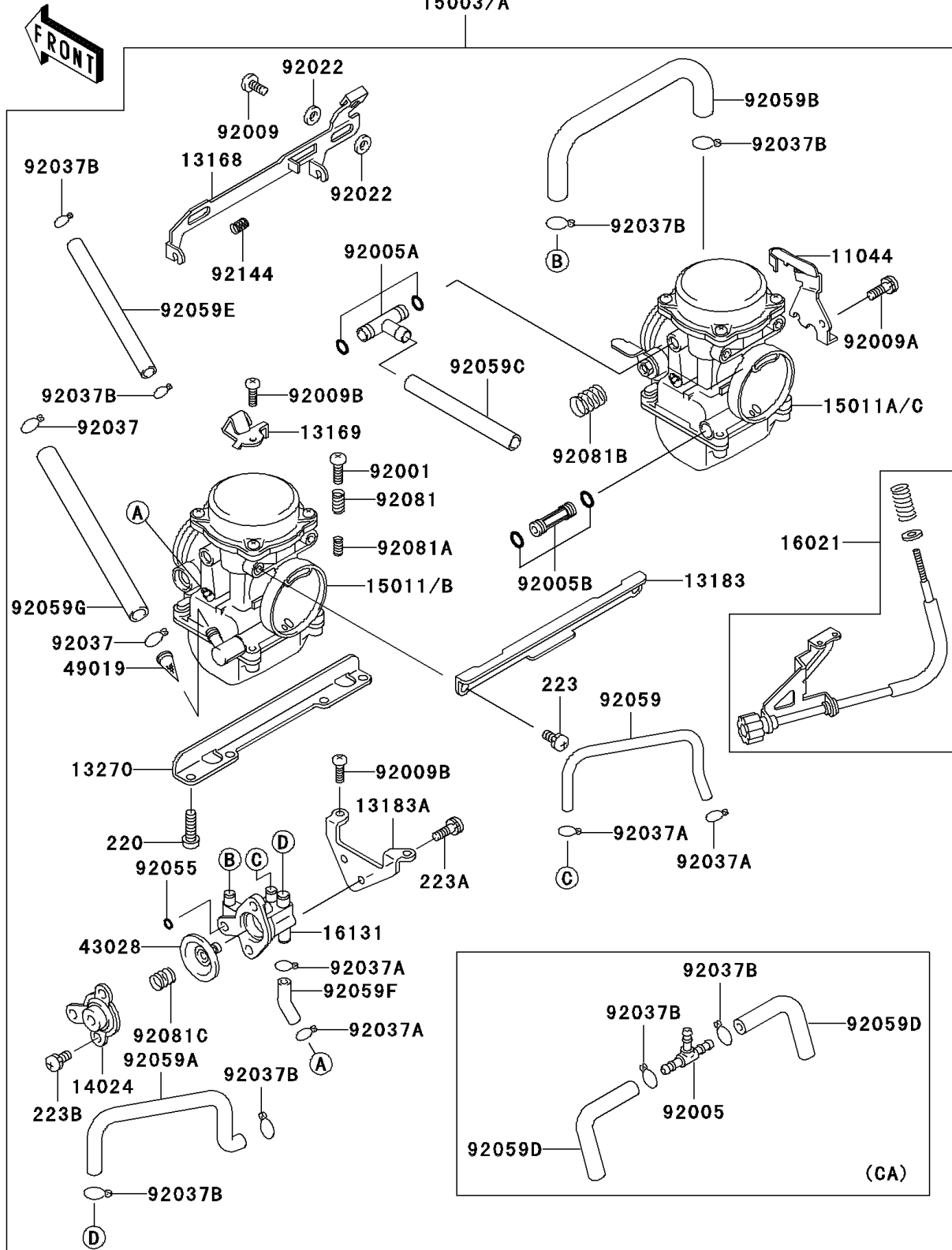
2001 Ninja[®] 250R

PARTS DIAGRAM

Carburetor

15003/A

E1611



2001 Ninja® 250R

PARTS LIST

Carburetor

| ITEM NAME | PART NUMBER | QUANTITY |
|---|-------------|----------|
| BRACKET,THROTTLE CABLE (Ref # 11044) | 11044-1061 | 1 |
| LEVER,STARTER (Ref # 13168) | 13168-1330 | 1 |
| PLATE,STARTER CABLE (Ref # 13169) | 13169-1965 | 1 |
| PLATE,CARBURETOR STAY,UPP (Ref # 13183) | 13183-1029 | 1 |
| PLATE,AIR CUT VALVE (Ref # 13183A) | 13183-1031 | 1 |
| PLATE,CARBURETOR STAY,LWR (Ref # 13270) | 13270-1073 | 1 |
| COVER,AIR CUT VALVE (Ref # 14024) | 14024-1327 | 1 |
| SCREW-THROTTLE STOP (Ref # 16021) | 16021-1173 | 1 |
| BODY-VALVE,DIAPHRAGM (Ref # 16131) | 16131-1062 | 1 |
| DIAPHRAGM,5.9MM,AIR CUT VALVE (Ref # 43028) | 43028-1053 | 1 |
| FILTER-FUEL (Ref # 49019) | 49019-1092 | 1 |
| BOLT,THROTTLE ADJUST (Ref # 92001) | 92001-1998 | 1 |
| FITTING (Ref # 92005A) | 92005-1306 | 1 |
| FITTING (Ref # 92005B) | 92005-1310 | 1 |
| SCREW (Ref # 92009) | 92009-1262 | 2 |
| SCREW,5X10 (Ref # 92009A) | 92009-1365 | 1 |
| SCREW,4X18 (Ref # 92009B) | 92009-1446 | 3 |
| WASHER,6.1X11X0.8,POLYACETAL (Ref # 92022) | 92022-1199 | 4 |
| SCREW-PAN-CROS,6X16 (Ref # 220) | 220B0616 | 4 |
| SCREW-PAN-WS-CROS (Ref # 223) | 223C0510 | 4 |
| SCREW-PAN-WS-CROS (Ref # 223A) | 223D0408 | 2 |
| SCREW-PAN-WS-CROS (Ref # 223B) | 223D0410 | 2 |
| CLAMP,FUEL TUBE (Ref # 92037) | 92037-1075 | 2 |
| CLAMP,TUBE (Ref # 92037A) | 92037-1142 | 4 |
| RING-O (Ref # 92055) | 92055-1245 | 1 |
| TUBE,3.5X6.5X180 (Ref # 92059) | 92059-1140 | 1 |
| TUBE,5X9X160 (Ref # 92059A) | 92059-1201 | 1 |
| TUBE,6.5X9.5X500 (Ref # 92059C) | 92059-1465 | 1 |
| TUBE,5X9X140 (Ref # 92059E) | 92059-1634 | 1 |

2001 Ninja® 250R

PARTS LIST

Carburetor

| ITEM NAME | PART NUMBER | QUANTITY |
|---|-------------|----------|
| TUBE,3.5X6.5X26 (Ref # 92059F) | 92059-1722 | 1 |
| TUBE,7.3X12.5X150 (Ref # 92059G) | 92059-1860 | 1 |
| SPRING,THROTTLE ADJUST UPP (Ref # 92081) | 92081-1620 | 1 |
| SPRING,THROTTLE ADJUST LWR (Ref # 92081A) | 92081-1621 | 1 |
| SPRING,THROTTLE ADJUST CNT (Ref # 92081B) | 92081-1622 | 1 |
| SPRING,AIR CUT VALVE (Ref # 92081C) | 92081-1719 | 1 |
| SPRING,THROTTLE ADJUST UPP (Ref # 92144) | 92144-1048 | 1 |
| CARBURETOR-ASSY (Ref # 15003) | 15003-1602 | 1 |
| CARBURETOR-ASSY (Ref # 15003A) | 15003-1603 | 1 |
| CARBURETOR,LH (Ref # 15011) | 15011-1820 | 1 |
| CARBURETOR,RH (Ref # 15011A) | 15011-1821 | 1 |
| CARBURETOR,LH (Ref # 15011B) | 15011-1826 | 1 |
| CARBURETOR,RH (Ref # 15011C) | 15011-1827 | 1 |
| FITTING,FUEL,T-TYPE (Ref # 92005) | 92005-1112 | 1 |
| CLAMP,TUBE (Ref # 92037B) | 92037-1477 | 6 |
| CLAMP,TUBE (Ref # 92037B) | 92037-1477 | 8 |
| TUBE,5X9X180 (Ref # 92059B) | 92059-1377 | 1 |
| TUBE,5X9X90 (Ref # 92059D) | 92059-1627 | 2 |