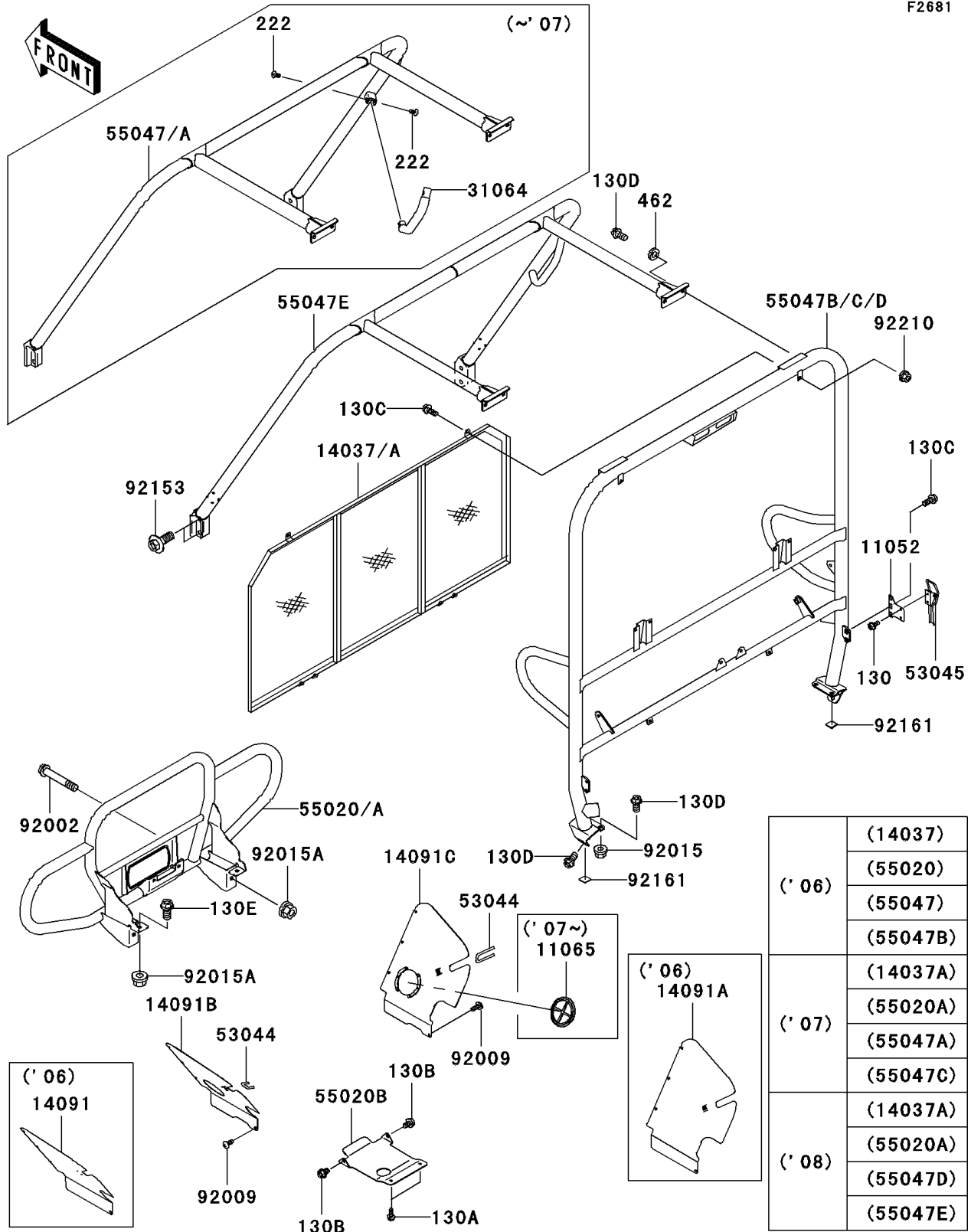


2008 Mule 3010 4x4 Hardwoods Green HD PARTS DIAGRAM

Guards/Cab Frame

F2681



('06)	(14037)
	(55020)
	(55047)
	(55047B)
('07)	(14037A)
	(55020A)
	(55047A)
	(55047C)
('08)	(14037A)
	(55020A)
	(55047D)
	(55047E)

2008 Mule 3010 4x4 Hardwoods Green HD PARTS LIST

Guards/Cab Frame

ITEM NAME	PART NUMBER	QUANTITY
BOLT-FLANGED,6X14 (Ref # 130)	130BB0614	4
BOLT-FLANGED,6X16 (Ref # 130A)	130BB0616	2
BOLT-FLANGED,8X12 (Ref # 130B)	130BB0812	2
BOLT-FLANGED,8X20 (Ref # 130C)	130BB0820	10
BOLT-FLANGED,10X20 (Ref # 130D)	130BB1020	10
BOLT-FLANGED,12X25 (Ref # 130E)	130CA1225	2
WASHER-SPRING,10MM (Ref # 462)	462K1000	4
BRACKET,CARRIER CLAMP JOINT (Ref # 11052)	11052-7559	2
CAP,F.BLACK (Ref # 11065)	11065-1053-6Z	2
SCREEN,REAR GUARD,W.BLACK (Ref # 14037A)	14037-0016-388	1
COVER,FR,LH (Ref # 14091B)	14091-7553	1
COVER,FR,RH (Ref # 14091C)	14091-7554	1
TRIM (Ref # 53044)	53044-1137	2
HOOK-ASSY (Ref # 53045)	53045-1063	2
GUARD,FR,W.BLACK (Ref # 55020A)	55020-7505-388	1
GUARD,GEAR CASE (Ref # 55020B)	55020-7506	1
BAR-COMP,RR,W.BLACK (Ref # 55047D)	55047-7513-388	1
BAR-COMP,FR,W.BLACK (Ref # 55047E)	55047-7514-388	1
BOLT,FLANGED,12X75 (Ref # 92002)	92002-1661	2
SCREW,TAPPING,6X16 (Ref # 92009)	92009-1166	8
NUT,FLANGED,10MM (Ref # 92015)	92015-1428	4
NUT,LOCK,FLANGED,12MM (Ref # 92015A)	92015-1433	4
BOLT,FLANGED,14X36 (Ref # 92153)	92153-1282	4
DAMPER (Ref # 92161)	92161-0020	2
NUT,FLANGED,LOCK,8MM (Ref # 92210)	92210-0005	6