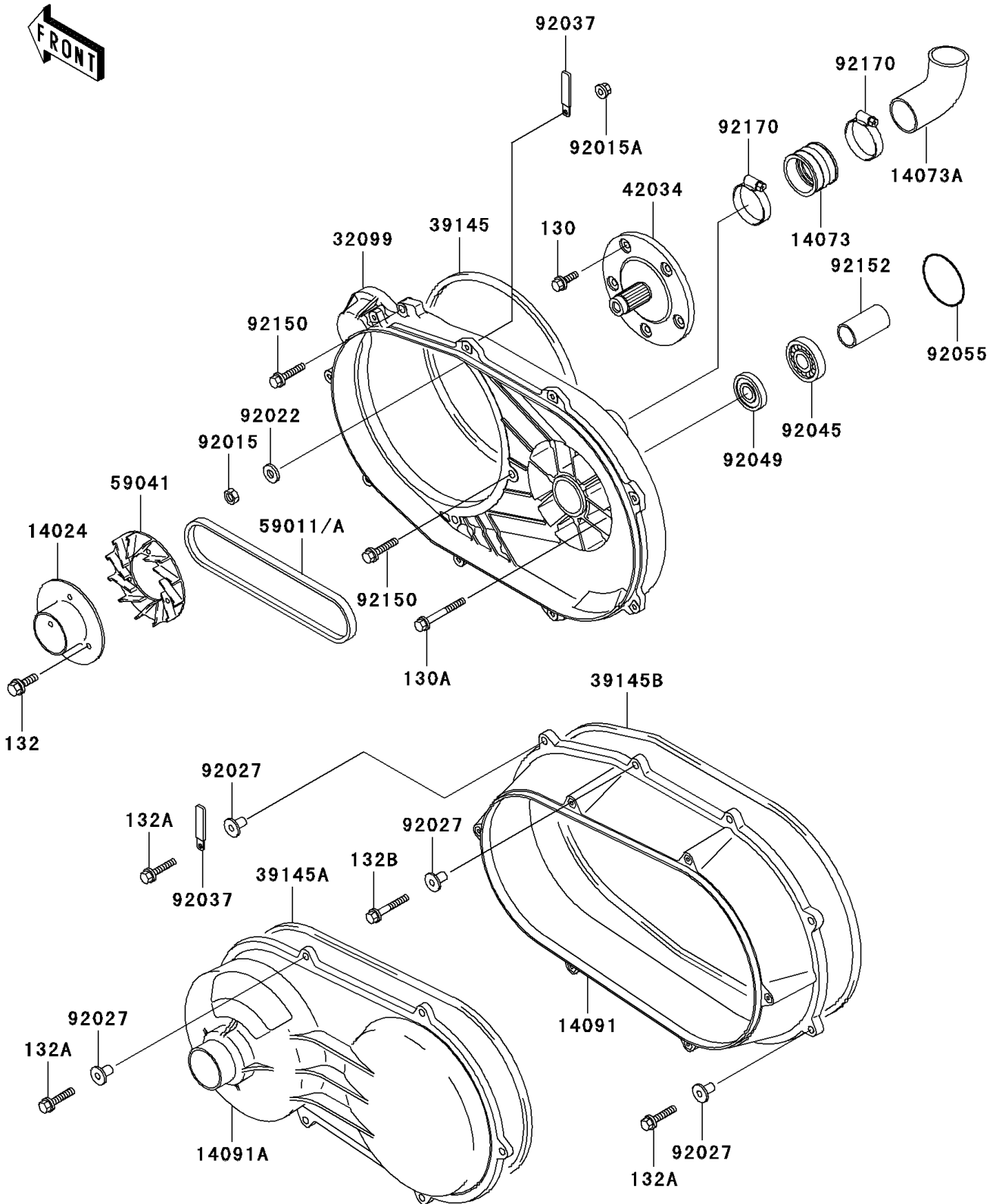


Mule 2510 Diesel PARTS DIAGRAM

Converter Cover/Drive Belt

E1393



Mule 2510 Diesel PARTS LIST

Converter Cover/Drive Belt

ITEM NAME	PART NUMBER	QUANTITY
BOLT-FLANGED,8X20 (Ref # 130)	130T0820	1
BOLT-FLANGED (Ref # 130A)	130Z0855	1
BOLT-FLANGED-SMALL (Ref # 132)	132G0630	1
BOLT-FLANGED-SMALL (Ref # 132A)	132J0630	1
BOLT-FLANGED-SMALL (Ref # 132B)	132J0635	1
COVER,FAN (Ref # 14024)	14024-1554	1
DUCT (Ref # 14073)	14073-1324	1
DUCT,CONVERTER OUTLET (Ref # 14073A)	14073-1780	1
COVER,MIDDLE (Ref # 14091)	14091-1134	1
COVER,BELT CONVERTER (Ref # 14091A)	14091-1187	1
CASE,BELT CONVERTER (Ref # 32099)	32099-1215	1
TRIM-SEAL,BELT CONVERTER CASE (Ref # 39145)	39145-1115	1
TRIM-SEAL,MIDDLE COVER (Ref # 39145A)	39145-1117	1
TRIM-SEAL,BELT CONVERTER (Ref # 39145B)	39145-1126	1
COUPLING (Ref # 42034)	42034-1160	1
BELT,CONVERTER (Ref # 59011A)	59011-1078	1
FAN (Ref # 59041)	59041-1059	1
NUT,LOCK,10MM,BLACK (Ref # 92015)	92015-1189	1
NUT,LOCK,FLANGED,6MM (Ref # 92015A)	92015-1675	1
WASHER,10.5X18X2.5 (Ref # 92022)	92022-1876	1
COLLAR,L=14.1 (Ref # 92027)	92027-1920	1
CLAMP,WIRING HARNESS,L=60 (Ref # 92037)	92037-1069	1
BEARING-BALL,62/28LLB (Ref # 92045)	92045-1378	1
SEAL-OIL,TC28X47X7 (Ref # 92049)	92049-1297	1
RING-O,67.6X3.5 (Ref # 92055)	92055-1327	1
BOLT,FLANGED,8X28 (Ref # 92150)	92150-1103	1
COLLAR,28.1X34X63.6 (Ref # 92152)	92152-1177	1
CLAMP (Ref # 92170)	92170-1448	1