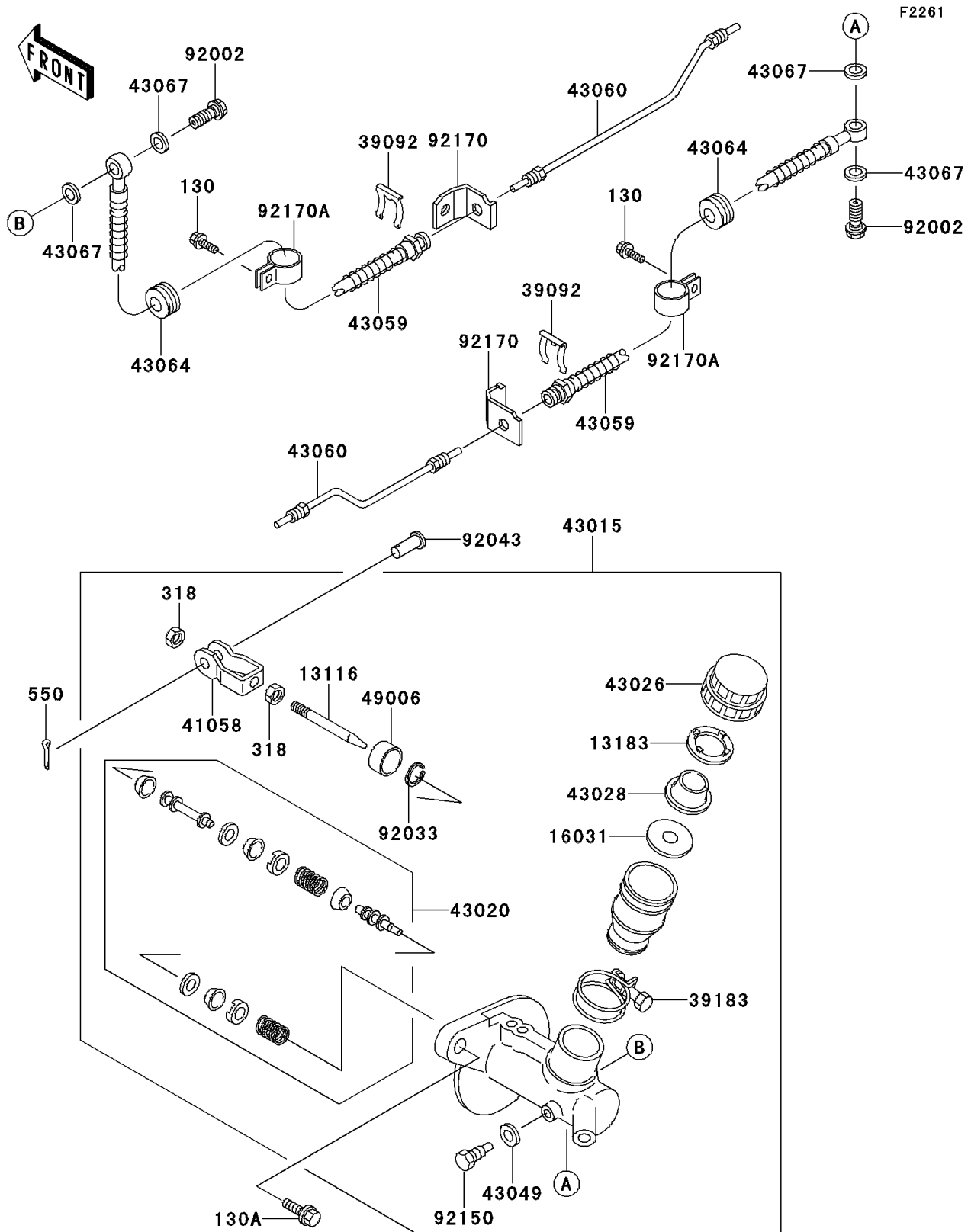


# Mule 2510 4X4 PARTS DIAGRAM

## Master Cylinder



F2261

# Mule 2510 4X4 PARTS LIST

## Master Cylinder

| ITEM NAME                          | PART NUMBER | QUANTITY |
|------------------------------------|-------------|----------|
| BOLT-FLANGED (Ref # 130)           | 130D0610    | 2        |
| BOLT-FLANGED (Ref # 130A)          | 130D0820    | 2        |
| NUT-HEX-SMALL (Ref # 318)          | 318H0800    | 2        |
| PIN-COTTER,2.5X18 (Ref # 550)      | 550D2518    | 1        |
| ROD-PUSH (Ref # 13116)             | 13116-1134  | 1        |
| PLATE (Ref # 13183)                | 13183-1306  | 1        |
| FLOAT (Ref # 16031)                | 16031-1069  | 1        |
| PIN-HAIR (Ref # 39092)             | 39092-1052  | 2        |
| BAND-ASSY (Ref # 39183)            | 39183-1055  | 1        |
| RODEND-BRAKE (Ref # 41058)         | 41058-1053  | 1        |
| CYLINDER-ASSY-MASTER (Ref # 43015) | 43015-1551  | 1        |
| PISTON-COMP-BRAKE (Ref # 43020)    | 43020-1081  | 1        |
| CAP-BRAKE (Ref # 43026)            | 43026-1067  | 1        |
| DIAPHRAGM (Ref # 43028)            | 43028-1078  | 1        |
| PACKING (Ref # 43049)              | 43049-1065  | 1        |
| HOSE-BRAKE,FR (Ref # 43059)        | 43059-1489  | 2        |
| PIPE-BRAKE,FR (Ref # 43060)        | 43060-1082  | 2        |
| GROMMET,HOSE CLAMP (Ref # 43064)   | 43064-007   | 2        |
| WASHER,10.5X15X1.5 (Ref # 43067)   | 43067-001   | 4        |
| BOOT (Ref # 49006)                 | 49006-1245  | 1        |
| BOLT,OIL,L=23 (Ref # 92002)        | 92002-1888  | 2        |
| RING-SNAP (Ref # 92033)            | 92033-1255  | 1        |
| PIN (Ref # 92043)                  | 92043-1039  | 1        |
| BOLT,STOP (Ref # 92150)            | 92150-1165  | 1        |
| CLAMP,BRAKE PIPE (Ref # 92170)     | 92170-1093  | 2        |
| CLAMP,HOSE (Ref # 92170A)          | 92170-1173  | 2        |