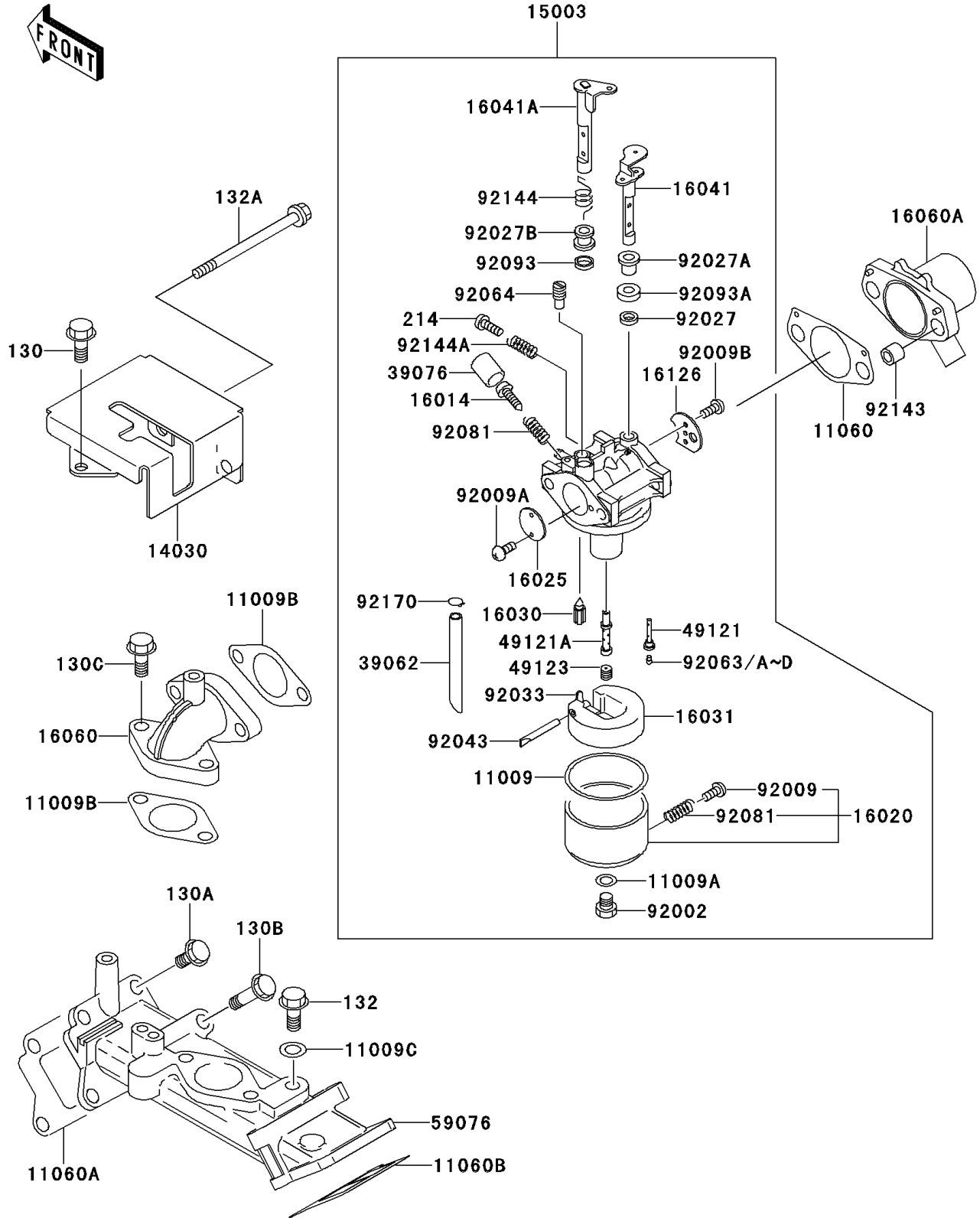


Mule 2510 4X4 PARTS DIAGRAM

Carburetor

E1611



Mule 2510 4X4 PARTS LIST

Carburetor

| ITEM NAME | PART NUMBER | QUANTITY |
|--|---------------|----------|
| GASKET,FLOAT CHAMBER (Ref # 11009) | 11009-2024 | 1 |
| GASKET (Ref # 11009A) | 11009-2025 | 1 |
| GASKET (Ref # 11009B) | 11009-2944 | 2 |
| GASKET (Ref # 11009C) | 11009-3028 | 1 |
| GASKET (Ref # 11060) | 11060-2086 | 1 |
| GASKET,INTAKE MANIFOLD (Ref # 11060A) | 11060-2087 | 1 |
| GASKET,INTAKE MANIFOLD (Ref # 11060B) | 11060-2088 | 1 |
| COVER-CARBURETOR,F.BLACK (Ref # 14030) | 14030-2058-9H | 1 |
| CARBURETOR-ASSY (Ref # 15003) | 15003-2509 | 1 |
| SCREW-PILOT AIR (Ref # 16014) | 16014-2076 | 1 |
| CHAMBER-FLOAT (Ref # 16020) | 16020-2094 | 1 |
| VALVE-THROTTLE (Ref # 16025) | 16025-2168 | 1 |
| VALVE-FLOAT (Ref # 16030) | 16030-2067 | 1 |
| FLOAT (Ref # 16031) | 16031-2066 | 1 |
| SHAFT-CARBURETOR (Ref # 16041) | 16041-2220 | 1 |
| SHAFT-CARBURETOR (Ref # 16041A) | 16041-2239 | 1 |
| PIPE-INTAKE (Ref # 16060) | 16060-2175 | 1 |
| PIPE-INTAKE (Ref # 16060A) | 16060-2176 | 1 |
| VALVE,CHOKE (Ref # 16126) | 16126-2193 | 1 |
| HOSE-COOLING (Ref # 39062) | 39062-2060 | 1 |
| LIMITER (Ref # 39076) | 39076-2053 | 1 |
| NOZZLE-MAIN (Ref # 49121) | 49121-2101 | 1 |
| NOZZLE-MAIN (Ref # 49121A) | 49121-2185 | 1 |
| HOLDER-MAIN JET (Ref # 49123) | 49123-2065 | 1 |
| MANIFOLD-INTAKE (Ref # 59076) | 59076-2062 | 1 |
| BOLT,MAIN JET (Ref # 92002) | 92002-2009 | 1 |
| SCREW,DRAIN (Ref # 92009) | 92009-2015 | 1 |
| SCREW,THROTTLE VALVE (Ref # 92009A) | 92009-2080 | 2 |
| SCREW,CHOKE VALVE (Ref # 92009B) | 92009-2081 | 2 |

Mule 2510 4X4 PARTS LIST

Carburetor

| ITEM NAME | PART NUMBER | QUANTITY |
|--------------------------------------|-------------|----------|
| COLLAR (Ref # 92027) | 92027-2003 | 1 |
| COLLAR (Ref # 92027A) | 92027-2004 | 1 |
| COLLAR,THROTTLE SHAFT (Ref # 92027B) | 92027-2025 | 1 |
| RING-SNAP (Ref # 92033) | 92033-2067 | 1 |
| PIN,FLOAT (Ref # 92043) | 92043-2006 | 1 |
| JET-MAIN,#110A (Ref # 92063) | 92063-2267 | 1 |
| JET-MAIN,#107.5A (Ref # 92063A) | 92063-2270 | 1 |
| JET-MAIN,#105A (Ref # 92063B) | 92063-2271 | 1 |
| BOLT-FLANGED,6X10 (Ref # 130) | 130B0610 | 1 |
| BOLT-FLANGED,6X20 (Ref # 130A) | 130B0620 | 5 |
| BOLT-FLANGED,6X45 (Ref # 130B) | 130B0645 | 3 |
| BOLT-FLANGED,8X20 (Ref # 130C) | 130B0820 | 2 |
| BOLT-FLANGED-SMALL,8X12 (Ref # 132) | 132J0812 | 1 |
| BOLT-FLANGED-SMALL (Ref # 132A) | 132J0880 | 2 |
| SCREW-PAN+- (Ref # 214) | 214B0414 | 1 |
| JET-MAIN,#112.5A (Ref # 92063C) | 92063-2305 | 1 |
| JET-MAIN,#115A (Ref # 92063D) | 92063-2314 | 1 |
| JET-PILOT,#40 (Ref # 92064) | 92064-2113 | 1 |
| SPRING (Ref # 92081) | 92081-2009 | 2 |
| SEAL (Ref # 92093) | 92093-2082 | 1 |
| SEAL (Ref # 92093A) | 92093-2101 | 1 |
| COLLAR,8.2X10X8.5 (Ref # 92143) | 92143-2201 | 2 |
| SPRING (Ref # 92144) | 92144-2339 | 1 |
| SPRING (Ref # 92144A) | 92144-2342 | 1 |
| CLAMP (Ref # 92170) | 92170-2023 | 1 |