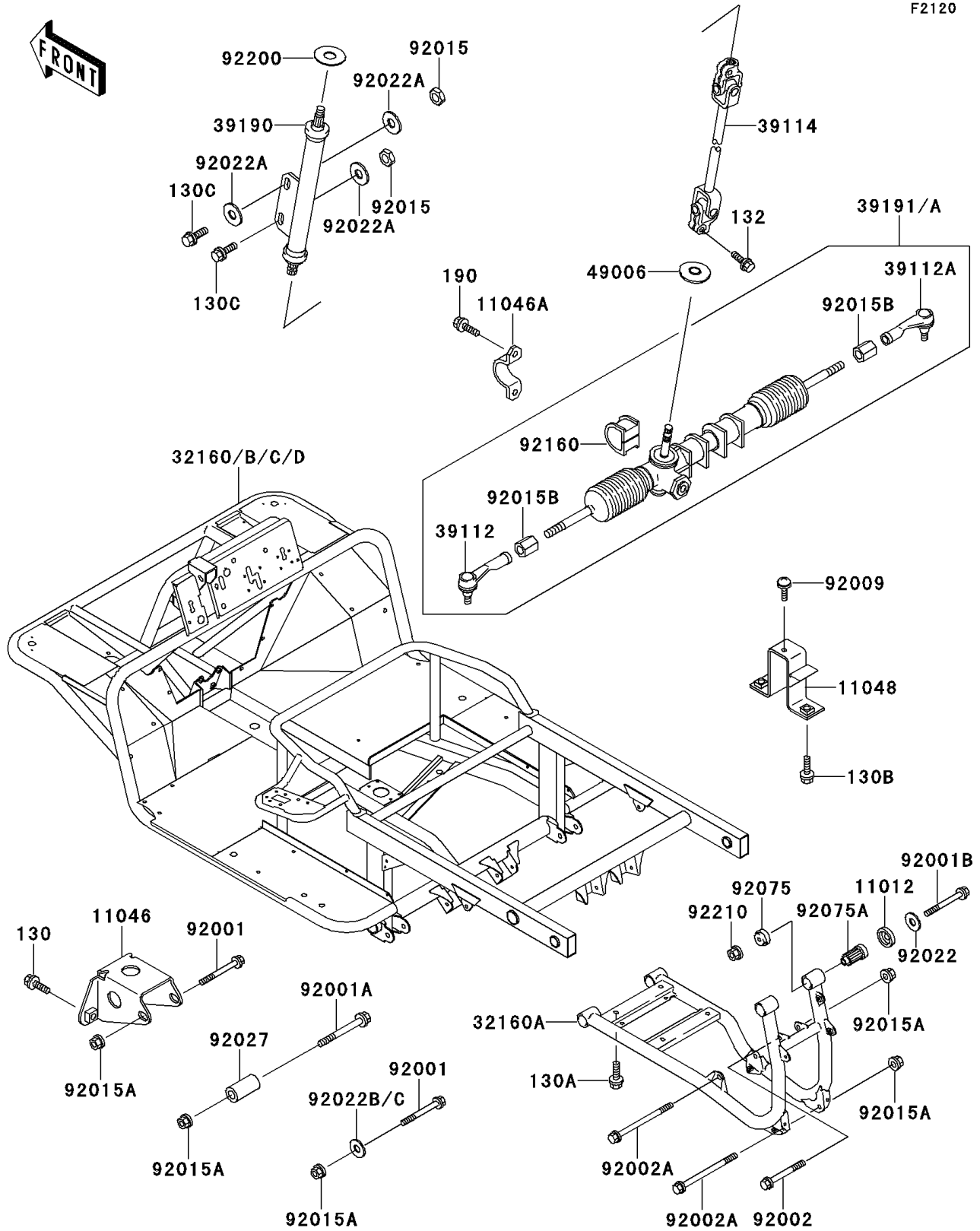


Mule 2510 4X4 PARTS DIAGRAM

Frame



Mule 2510 4X4 PARTS LIST

Frame

| ITEM NAME | PART NUMBER | QUANTITY |
|--|-------------|----------|
| BOLT-FLANGED,10X20 (Ref # 130) | 130G1020 | 3 |
| BOLT-FLANGED,8X20 (Ref # 130A) | 130H0820 | 4 |
| BOLT-FLANGED,8X20 (Ref # 130B) | 130J0820 | 2 |
| BOLT-FLANGED,10X30 (Ref # 130C) | 130J1030 | 2 |
| BOLT-FLANGED-SMALL (Ref # 132) | 132J0825 | 2 |
| BOLT-UPSET-WS (Ref # 190) | 190H1025 | 4 |
| CAP,ENGINE BRACKET (Ref # 11012) | 11012-1228 | 4 |
| BRACKET,FRONT DIFF (Ref # 11046) | 11046-1684 | 1 |
| BRACKET,STEERING GEAR (Ref # 11046A) | 11046-1858 | 2 |
| BRACKET,REAR FRAME (Ref # 11048) | 11048-1245 | 1 |
| FRAME-COMP,MAIN (Ref # 32160) | 32160-1264 | 1 |
| FRAME-COMP,RR (Ref # 32160A) | 32160-1265 | 1 |
| RODEND-TIE,STEERING GEAR,LH (Ref # 39112) | 39112-1068 | 1 |
| RODEND-TIE,STEERING GEAR,RH (Ref # 39112A) | 39112-1069 | 1 |
| SHAFT-COMP-STRG (Ref # 39114) | 39114-1070 | 1 |
| SHAFT-ASSY-STEERING (Ref # 39190) | 39190-1003 | 1 |
| GEAR-ASSY-STEERING (Ref # 39191) | 39191-1004 | 1 |
| BOOT,STEERING SHAFT,LWR (Ref # 49006) | 49006-1255 | 1 |
| BOLT,FLANGED,10X70 (Ref # 92001) | 92001-1600 | 2 |
| BOLT,FLANGED,10X115 (Ref # 92001A) | 92001-1603 | 1 |
| BOLT,FLANGED,10X85 (Ref # 92001B) | 92001-1619 | 4 |
| BOLT,FLANGED,10X80 (Ref # 92002) | 92002-1764 | 1 |
| BOLT,FLANGED,10X145 (Ref # 92002A) | 92002-1765 | 2 |
| SCREW,6X14 (Ref # 92009) | 92009-1288 | 1 |
| NUT,LOCK,10MM,BLACK (Ref # 92015) | 92015-1189 | 2 |
| NUT,LOCK,10MM (Ref # 92015A) | 92015-1597 | 6 |
| NUT (Ref # 92015B) | 92015-1864 | 2 |
| WASHER,10.2X24X1 (Ref # 92022) | 92022-137 | AR |
| WASHER,10.5X26X2.3,BLACK (Ref # 92022A) | 92022-1396 | 3 |

Mule 2510 4X4 PARTS LIST

Frame

| ITEM NAME | PART NUMBER | QUANTITY |
|---|-------------|----------|
| WASHER,10.2X20X0.5 (Ref # 92022B) | 92022-1649 | AR |
| WASHER,10.5X20X1 (Ref # 92022C) | 92022-239 | AR |
| COLLAR,11X20X39 (Ref # 92027) | 92027-1518 | 1 |
| DAMPER,ENGINE MOUNT,SIDE (Ref # 92075) | 92075-1274 | 4 |
| DAMPER,ENGINE MOUNT,MAIN (Ref # 92075A) | 92075-1377 | 4 |
| DAMPER,STEERING GEAR (Ref # 92160) | 92160-1084 | 2 |
| WASHER,15X45X0.6 (Ref # 92200) | 92200-1130 | 1 |
| NUT,LOCK,FLANGED,10MM (Ref # 92210) | 92210-1081 | 4 |