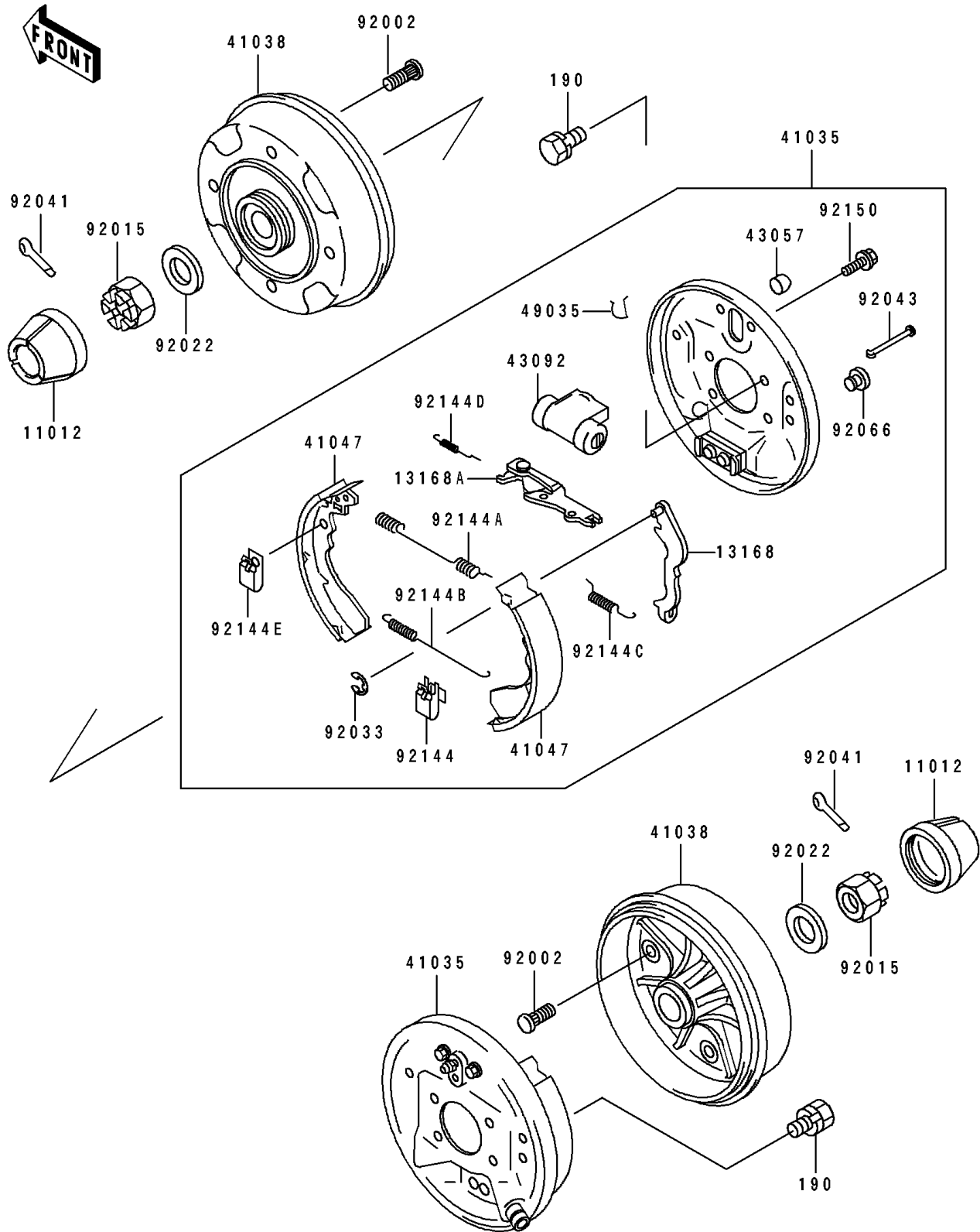


Mule 500 PARTS DIAGRAM

Rear Hub

F2240



Mule 500 PARTS LIST

Rear Hub

| ITEM NAME | PART NUMBER | QUANTITY |
|-----------------------------------|-------------|----------|
| CAP,WHEEL (Ref # 11012) | 11012-1519 | 2 |
| LEVER (Ref # 13168) | 13168-1481 | 2 |
| LEVER (Ref # 13168A) | 13168-1482 | 2 |
| PANEL-ASSY-BRAKE,RR (Ref # 41035) | 41035-1283 | 2 |
| DRUM,REAR BRAKE (Ref # 41038) | 41038-1239 | 2 |
| SHOE-ASSY-BRAKE,RR (Ref # 41047) | 41047-1052 | 4 |
| CAP-BREATHER (Ref # 43057) | 43057-1054 | 2 |
| CYLINDER (Ref # 43092) | 43092-1058 | 2 |
| PIN-SPRING (Ref # 49035) | 49035-1058 | 2 |
| BOLT,10X30 (Ref # 92002) | 92002-1388 | 8 |
| NUT,CASTLE,18MM (Ref # 92015) | 42045-018 | 2 |
| WASHER,18.3X34X4.5 (Ref # 92022) | 92022-1658 | 2 |
| RING-SNAP (Ref # 92033) | 92033-1279 | 2 |
| COTTER,4.0X35 (Ref # 92041) | 92041-1053 | 2 |
| PIN,SHOE HOLD (Ref # 92043) | 92043-1460 | 4 |
| PLUG (Ref # 92066) | 92066-1365 | 2 |
| SPRING,SHOE HOLD (Ref # 92144) | 92144-1611 | 2 |
| SPRING,RETURN,UPP (Ref # 92144A) | 92144-1612 | 2 |
| SPRING,RETURN,LWR (Ref # 92144B) | 92144-1613 | 2 |
| SPRING (Ref # 92144C) | 92144-1614 | 2 |
| SPRING (Ref # 92144D) | 92144-1615 | 2 |
| SPRING,SHOE HOLD (Ref # 92144E) | 92144-1616 | 2 |
| BOLT (Ref # 92150) | 92150-1541 | 4 |
| BOLT-UPSET-WS,10X16 (Ref # 190) | 190H1016 | 8 |