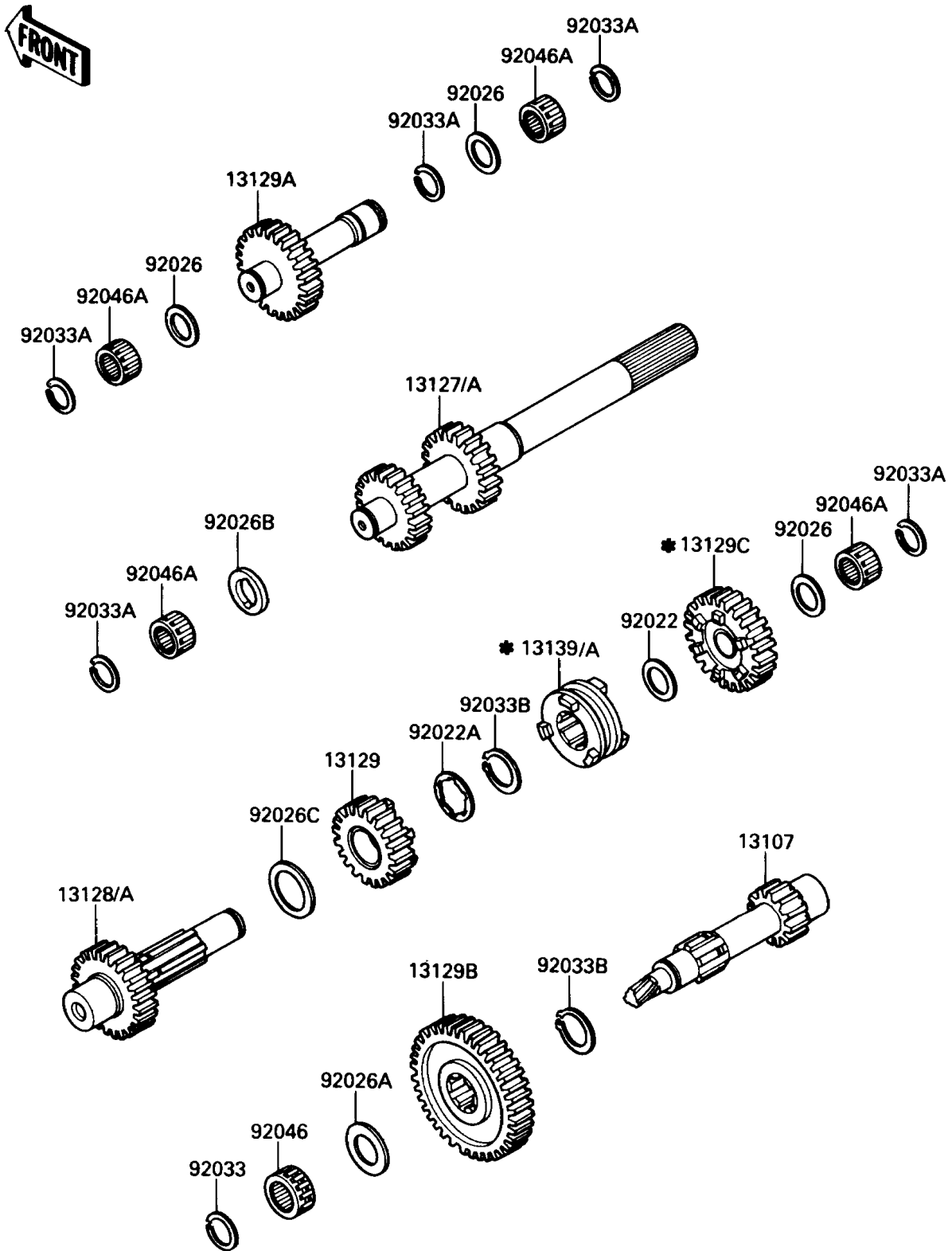


# Mule 1000 PARTS DIAGRAM

Transmission

E1361-0195



# Mule 1000 PARTS LIST

## Transmission

ITEM NAME	PART NUMBER	QUANTITY
SHAFT,REDUCTION,13T (Ref # 13107)	13107-1232	1
SHAFT-TRANSMISSION INPUT (Ref # 13127)	13127-1168	1
SHAFT-TRANSMISSION INPUT (Ref # 13127A)	13127-1177	1
SHAFT-TRANSMISSION OUTPUT (Ref # 13128)	13128-1148	1
SHAFT-TRANSMISSION OUTPUT (Ref # 13128A)	13128-1165	1
GEAR,OUTPUT REVERSE,21T (Ref # 13129)	13129-1894	1
GEAR,REVERSE IDLER,24T (Ref # 13129A)	13129-1895	1
GEAR,REDUCTION,36T (Ref # 13129B)	13129-1896	1
GEAR,OUTPUT FORWARD,25T (Ref # 13129C)	13129-1952	1
SHIFTER (Ref # 13139)	13139-1053	1
SHIFTER (Ref # 13139A)	13139-1064	1
WASHER,20.5X30X1,STEEL (Ref # 92022)	92022-112	1
WASHER,TOOTHED,28.3X33.5X1 (Ref # 92022A)	92022-1139	1
SPACER,20.3X30X2.0 (Ref # 92026)	92026-1022	3
SPACER,22X35.5X2.1 (Ref # 92026A)	92026-1224	1
SPACER,20X32X3.6 (Ref # 92026B)	92026-1298	1
SPACER,28X38X2 (Ref # 92026C)	92026-1299	1
RING-SNAP,20X25.5X1.2 (Ref # 92033)	92033-025	1
RING-SNAP,18MM (Ref # 92033A)	92033-029	5
RING-SNAP,25.9MM (Ref # 92033B)	92033-1037	2
BEARING-NEEDLE,FWF-223014 (Ref # 92046)	92046-031	1
BEARING-NEEDLE,KMJ20X26X13.8X1 (Ref # 92046A)	92046-1185	4