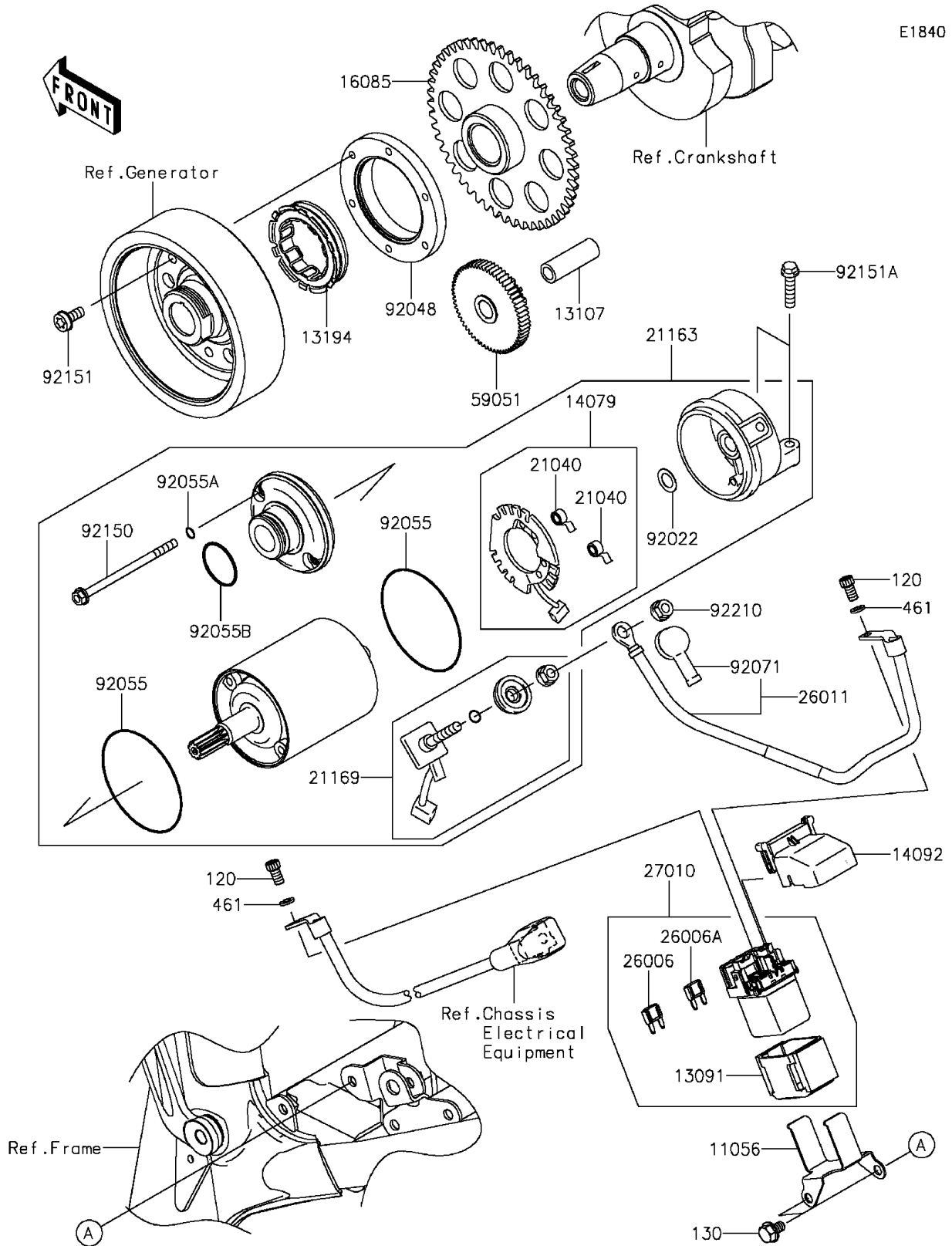


2014 ZR800 (European) PARTS DIAGRAM

Starter Motor



E1840

2014 ZR800 (European) PARTS LIST

Starter Motor

ITEM NAME	PART NUMBER	QUANTITY
BOLT-SOCKET,5X10 (Ref # 120)	120CB0510	2
BOLT-FLANGED,6X10 (Ref # 130)	130CC0610	2
WASHER-SPRING,5MM (Ref # 461)	461DB0500	2
BRACKET (Ref # 11056)	11056-2049	1
HOLDER,MAGNETIC SWITCH (Ref # 13091)	13091-1884	1
SHAFT,IDLER GEAR (Ref # 13107)	13107-0744	1
CLUTCH-ONEWAY (Ref # 13194)	13194-1096	1
HOLDER-ASSY,STARTER (Ref # 14079)	14079-0009	1
COVER (Ref # 14092)	14092-0109	1
GEAR,CLUTCH ONEWAY (Ref # 16085)	16085-1303	1
SPRING-BRUSH (Ref # 21040)	21040-0001	2
STARTER-ELECTRIC (Ref # 21163)	21163-0729	1
TERMINAL,STARTER (Ref # 21169)	21169-1058	1
FUSE,MINI BLADE,15A,BLUE (Ref # 26006)	26006-0001	1
FUSE,MINI BLADE,30A,GREEN (Ref # 26006A)	26006-1080	1
WIRE-LEAD (Ref # 26011)	26011-0760	1
SWITCH (Ref # 27010)	27010-0113	1
GEAR-SPUR,IDLER (Ref # 59051)	59051-0714	1
WASHER (Ref # 92022)	92022-2200	1
RACE (Ref # 92048)	92048-0018	1
RING-O,62MM (Ref # 92055)	92055-1260	2
RING-O,4.5MM (Ref # 92055A)	92055-1261	2
RING-O,24.4X3.1 (Ref # 92055B)	92055-1262	1
GROMMET (Ref # 92071)	92071-0713	1
BOLT (Ref # 92150)	92150-1237	2
BOLT,6X14 (Ref # 92151)	92151-1335	6
BOLT,FLANGED-SMALL,6X25 (Ref # 92151A)	92151-1930	2
NUT,6MM (Ref # 92210)	92210-0188	1