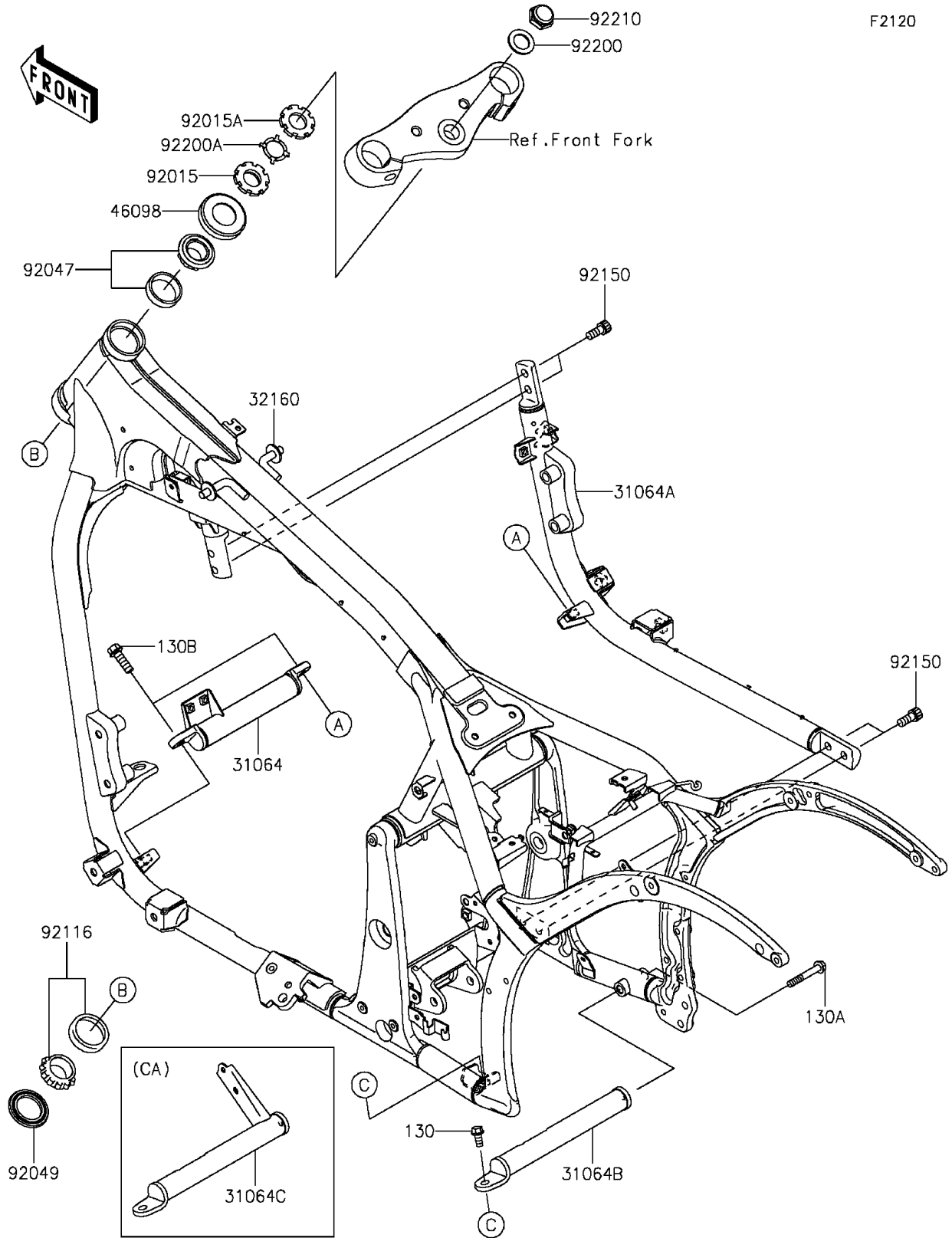


## 2012 VULCAN® 900 CLASSIC LT PARTS DIAGRAM

Frame



## 2012 VULCAN® 900 CLASSIC LT PARTS LIST

Frame

ITEM NAME	PART NUMBER	QUANTITY
BOLT-FLANGED,8X18 (Ref # 130)	130BB0818	1
BOLT-FLANGED,8X65 (Ref # 130A)	130BB0865	1
BOLT-FLANGED,10X25 (Ref # 130B)	130BB1025	1
PIPE-COMP,FRONT CROSS,F.S.BLK (Ref # 31064)	31064-0047-18R	1
PIPE-COMP,DOWNTUBE,RH,F.S.BLK (Ref # 31064A)	31064-0097-18R	1
FRAME-COMP,F.S.BLACK (Ref # 32160)	32160-0597-18R	1
CAP,STEERING STEM (Ref # 46098)	46098-017	1
NUT,25MM,T=10 (Ref # 92015)	92015-1377	1
NUT,25MM,T=6 (Ref # 92015A)	92015-1378	1
RACE,ROLLER,32005JR RS (Ref # 92047)	92047-017	1
SEAL-OIL,XMHE36X52X4J (Ref # 92049)	92049-1162	1
BEARING-ROLLER,HR320/28XJ (Ref # 92116)	92116-1009	1
BOLT,SOCKET,10X23 (Ref # 92150)	92150-1942	1
WASHER,22.5X36X2.3 (Ref # 92200)	92200-0270	1
WASHER,CLAW,25.5X34X0.6 (Ref # 92200A)	92200-0353	1
NUT,CAP,22MM (Ref # 92210)	92210-0263	1
PIPE-COMP,REAR CROSS,F.S.BLACK (Ref # 31064B)	31064-0183-18R	1
PIPE-COMP,REAR CROSS,F.S.BLACK (Ref # 31064C)	31064-0184-18R	1