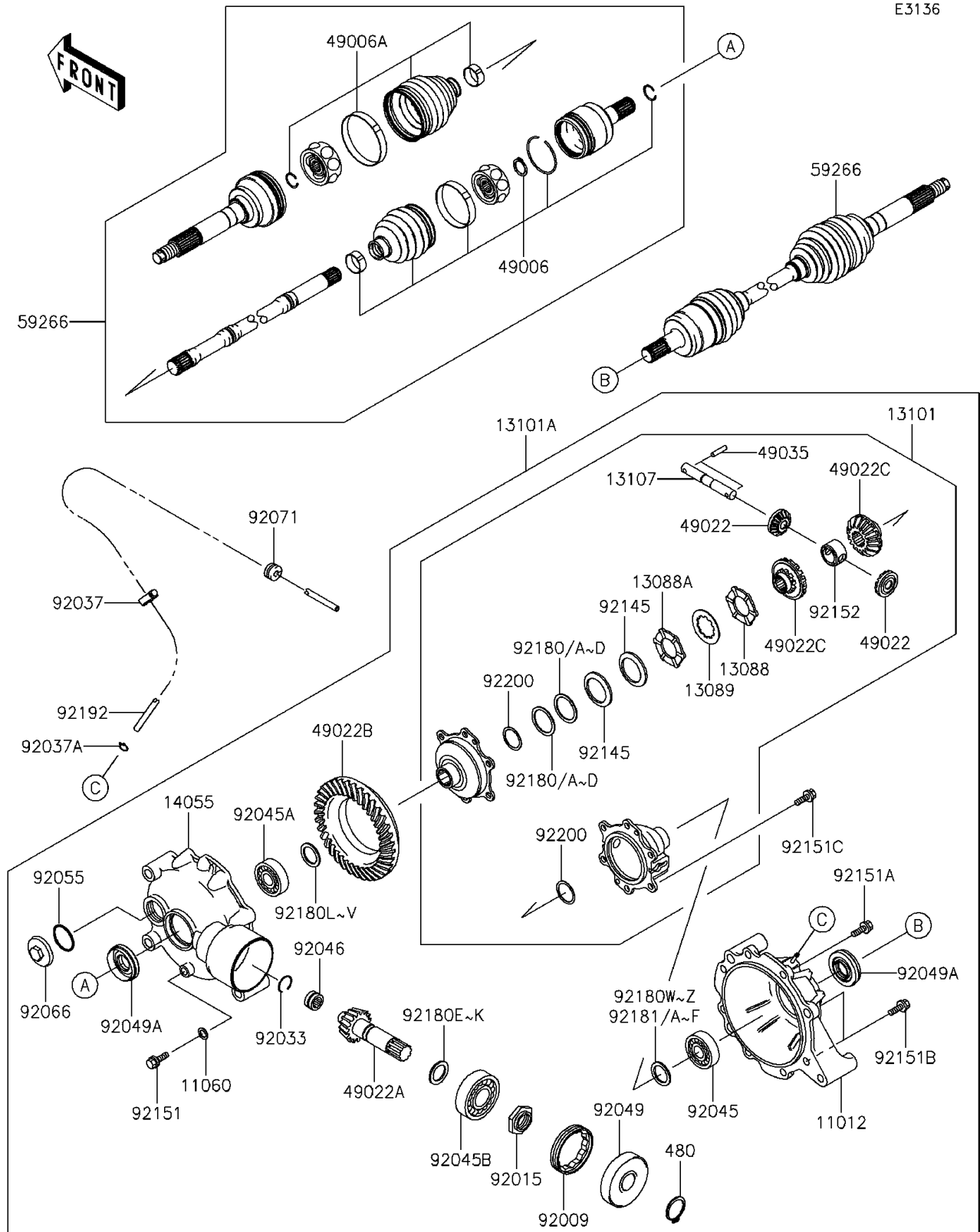


## 2014 MULE™ 610 4x4 XC CAMO PARTS DIAGRAM

Drive Shaft-Front

E3136



## 2014 MULE™ 610 4x4 XC CAMO PARTS LIST

Drive Shaft-Front

| ITEM NAME                                   | PART NUMBER | QUANTITY |
|---|-------------|----------|
| CAP,DRIVE SHAFT (Ref # 11012)               | 11012-1955  | 1        |
| GASKET (Ref # 11060)                        | 11060-1735  | 1        |
| PLATE-FRICTION (Ref # 13088)                | 13088-0008  | 1        |
| PLATE-FRICTION (Ref # 13088A)               | 13088-0009  | 1        |
| PLATE-CLUTCH (Ref # 13089)                  | 13089-1118  | 1        |
| GEAR-ASSY (Ref # 13101)                     | 13101-0047  | 1        |
| GEAR-ASSY,FRONT DIFFERENTIAL (Ref # 13101A) | 13101-0112  | 1        |
| SHAFT (Ref # 13107)                         | 13107-1369  | 1        |
| CASE-GEAR (Ref # 14055)                     | 14055-1129  | 1        |
| BOOT,DOJ (Ref # 49006)                      | 49006-0074  | 1        |
| BOOT,UJ (Ref # 49006A)                      | 49006-0105  | 1        |
| GEAR-BEVEL (Ref # 49022)                    | 49022-0017  | 1        |
| GEAR-BEVEL (Ref # 49022A)                   | 49022-1147  | 1        |
| GEAR-BEVEL (Ref # 49022B)                   | 49022-1148  | 1        |
| GEAR-BEVEL (Ref # 49022C)                   | 49022-1153  | 1        |
| PIN-SPRING (Ref # 49035)                    | 49035-1065  | 1        |
| JOINT-BALL,FR (Ref # 59266)                 | 59266-0039  | 1        |
| SCREW,LOCK (Ref # 92009)                    | 92009-1762  | 1        |
| NUT,LOCK (Ref # 92015)                      | 92015-1992  | 1        |
| RING-SNAP (Ref # 92033)                     | 92033-1289  | 1        |
| CLAMP,HOSE (Ref # 92037)                    | 92037-1827  | 1        |
| CLAMP (Ref # 92037A)                        | 92037-1835  | 1        |
| BEARING-BALL (Ref # 92045)                  | 92045-0147  | 1        |
| BEARING-BALL (Ref # 92045A)                 | 92045-1331  | 1        |
| BEARING-BALL (Ref # 92045B)                 | 92045-1332  | 1        |
| BEARING-NEEDLE (Ref # 92046)                | 92046-1248  | 1        |
| SEAL-OIL (Ref # 92049)                      | 92049-1454  | 1        |
| SEAL-OIL (Ref # 92049A)                     | 92049-1455  | 1        |
| RING-O,OIL FILLER (Ref # 92055)             | 92055-1553  | 1        |

## 2014 MULE™ 610 4x4 XC CAMO PARTS LIST

Drive Shaft-Front

| ITEM NAME                       | PART NUMBER | QUANTITY |
|---------------------------------|-------------|----------|
| PLUG,OIL FILLER (Ref # 92066)   | 92066-1441  | 1        |
| GROMMET (Ref # 92071)           | 92071-0012  | 1        |
| SPRING (Ref # 92145)            | 92145-1053  | 1        |
| BOLT,SEALING (Ref # 92151)      | 92151-1051  | 1        |
| BOLT,FLANGED (Ref # 92151A)     | 92151-1052  | 1        |
| BOLT,FLANGED (Ref # 92151B)     | 92151-1053  | 1        |
| BOLT (Ref # 92151C)             | 92151-1054  | 1        |
| COLLAR (Ref # 92152)            | 92152-0145  | 1        |
| SHIM,T=1.0 (Ref # 92180)        | 92180-1214  | 1        |
| SHIM,T=1.2 (Ref # 92180A)       | 92180-1215  | 1        |
| SHIM,T=1.4 (Ref # 92180B)       | 92180-1216  | 1        |
| CIRCLIP-TYPE-C,22MM (Ref # 480) | 480J2200    | 1        |
| SHIM,T=1.6 (Ref # 92180C)       | 92180-1217  | 1        |
| SHIM,T=1.8 (Ref # 92180D)       | 92180-1218  | 1        |
| SHIM,26X34X1.82 (Ref # 92180E)  | 92180-1219  | 1        |
| SHIM,26X34X1.88 (Ref # 92180F)  | 92180-1220  | 1        |
| SHIM,26X34X1.94 (Ref # 92180G)  | 92180-1221  | 1        |
| SHIM,26X34X2.00 (Ref # 92180H)  | 92180-1222  | 1        |
| SHIM,26X34X2.06 (Ref # 92180I)  | 92180-1223  | 1        |
| SHIM,26X34X2.12 (Ref # 92180J)  | 92180-1224  | 1        |
| SHIM,26X34X2.18 (Ref # 92180K)  | 92180-1225  | 1        |
| SHIM,T=1.75 (Ref # 92180L)      | 92180-1231  | 1        |
| SHIM,T=1.80 (Ref # 92180M)      | 92180-1232  | 1        |
| SHIM,T=1.85 (Ref # 92180N)      | 92180-1233  | 1        |
| SHIM,T=1.90 (Ref # 92180O)      | 92180-1234  | 1        |
| SHIM,T=1.95 (Ref # 92180P)      | 92180-1235  | 1        |
| SHIM,T=2.00 (Ref # 92180Q)      | 92180-1236  | 1        |
| SHIM,T=2.05 (Ref # 92180R)      | 92180-1237  | 1        |
| SHIM,T=2.10 (Ref # 92180S)      | 92180-1238  | 1        |

## 2014 MULE™ 610 4x4 XC CAMO PARTS LIST

Drive Shaft-Front

| ITEM NAME                   | PART NUMBER | QUANTITY |
|-----------------------------|-------------|----------|
| SHIM,T=2.15 (Ref # 92180T)  | 92180-1239  | 1        |
| SHIM,T=2.20 (Ref # 92180U)  | 92180-1240  | 1        |
| SHIM,T=2.25 (Ref # 92180V)  | 92180-1241  | 1        |
| SHIM,T=0.75 (Ref # 92180W)  | 92180-1254  | 1        |
| SHIM,T=0.80 (Ref # 92180X)  | 92180-1255  | 1        |
| SHIM,T=0.85 (Ref # 92180Y)  | 92180-1256  | 1        |
| SHIM,T=0.90 (Ref # 92180Z)  | 92180-1257  | 1        |
| SHIM,T=0.95 (Ref # 92181)   | 92180-1258  | 1        |
| SHIM,T=1.00 (Ref # 92181A)  | 92180-1259  | 1        |
| SHIM,T=1.05 (Ref # 92181B)  | 92180-1260  | 1        |
| SHIM,T=1.10 (Ref # 92181C)  | 92180-1261  | 1        |
| SHIM,T=1.15 (Ref # 92181D)  | 92180-1262  | 1        |
| SHIM,T=1.20 (Ref # 92181E)  | 92180-1263  | 1        |
| SHIM,T=1.25 (Ref # 92181F)  | 92180-1264  | 1        |
| TUBE,4X7X1100 (Ref # 92192) | 92192-0165  | 1        |
| WASHER (Ref # 92200)        | 92200-1344  | 1        |