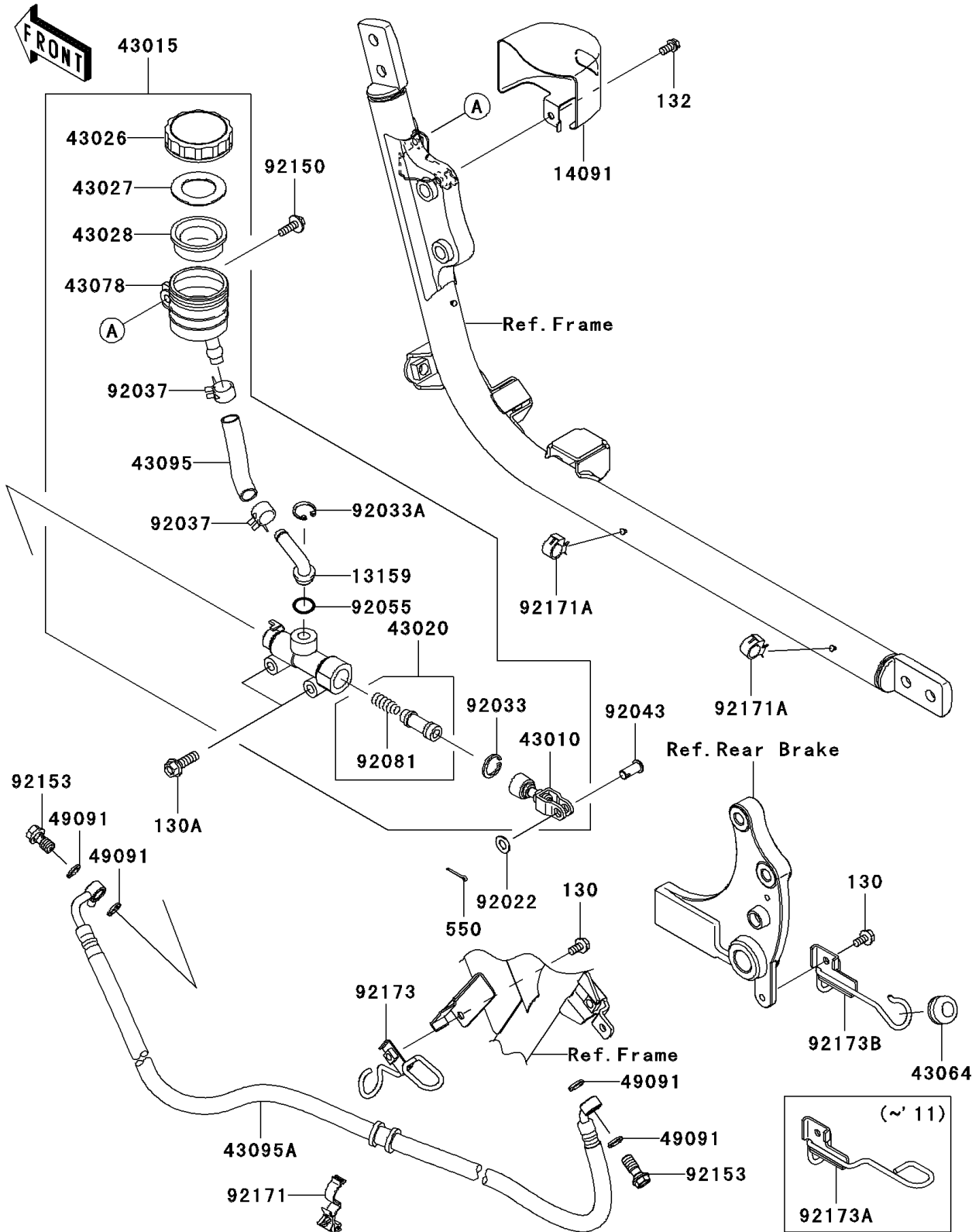


# 2009 Vulcan® 1700 Nomad™ PARTS DIAGRAM

## Rear Master Cylinder

F2293



## 2009 Vulcan® 1700 Nomad™ PARTS LIST

### Rear Master Cylinder

ITEM NAME	PART NUMBER	QUANTITY
BOLT-FLANGED,6X12 (Ref # 130)	130BB0612	2
BOLT-FLANGED,8X25 (Ref # 130A)	130BB0825	2
BOLT-FLANGED-SMALL,6X12 (Ref # 132)	132BB0612	1
PIN-COTTER,2.0X15 (Ref # 550)	550AA2015	1
CONNECTOR,RR MASTER CYLINDER (Ref # 13159)	13159-1052	1
COVER,RESERVOIR TANK (Ref # 14091)	14091-1595	1
ROD-ASSY-BRAKE (Ref # 43010)	43010-1062	1
CYLINDER-ASSY-MASTER,RR (Ref # 43015)	43015-0081	1
PISTON-COMP-BRAKE (Ref # 43020)	43020-1057	1
CAP-BRAKE (Ref # 43026)	43026-1051	1
PLATE-DIAPHRAGM (Ref # 43027)	43027-1051	1
DIAPHRAGM,MASTER CYLINDER (Ref # 43028)	43028-1057	1
RESERVOIR,RR MASTER CYLINDER (Ref # 43078)	43078-1178	1
HOSE-BRAKE,RR MASTER CYLINDER (Ref # 43095)	43095-0306	1
HOSE-BRAKE,RR (Ref # 43095A)	43095-0480	1
WASHER-SEAL,10.1X14.5X1.5 (Ref # 49091)	49091-0001	4
WASHER,8.5X16X1.2 (Ref # 92022)	92022-1582	1
RING-SNAP,20.9X24.6X1.2 (Ref # 92033)	92033-0079	1
RING-SNAP,20.5MM (Ref # 92033A)	92033-1186	1
CLAMP,BRAKE HOSE (Ref # 92037)	92037-1547	2
PIN,8X16 (Ref # 92043)	92043-1013	1
RING-O,MASTER CYLINDER (Ref # 92055)	92055-1251	1
SPRING,MASTER CYLINDER (Ref # 92081)	92081-1737	1
BOLT,FLANGED,6X20 (Ref # 92150)	92150-1339	1
BOLT,OIL,L=23 (Ref # 92153)	92153-0627	2
CLAMP (Ref # 92171)	92171-0782	1
CLAMP,DIA=15 (Ref # 92171A)	92171-1424	2
CLAMP,BRAKE HOSE (Ref # 92173)	92173-0033	1
CLAMP,BRAKE HOSE (Ref # 92173A)	92173-0135	1