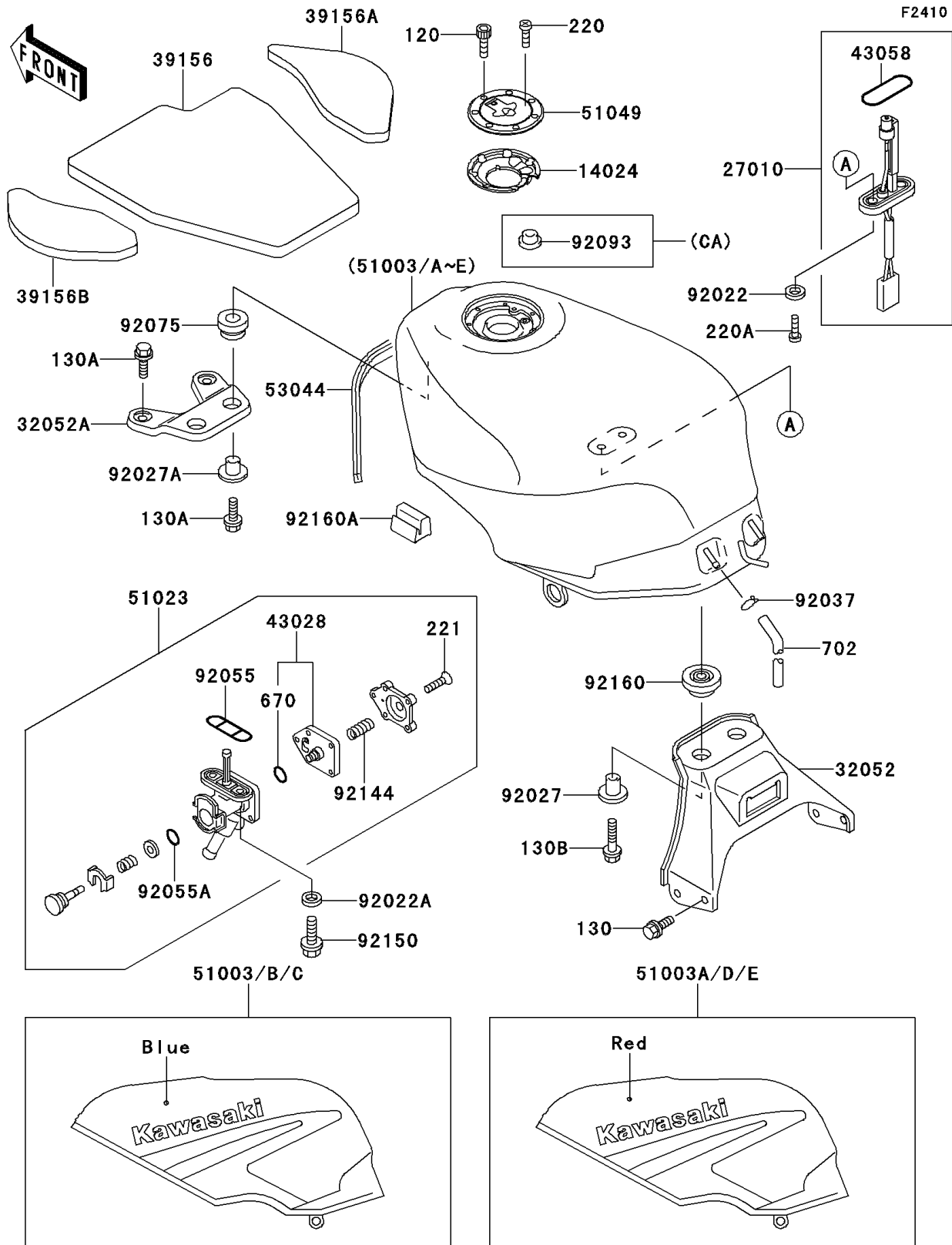


# 1990 Ninja® ZX™-6 PARTS DIAGRAM

Fuel Tank



# 1990 Ninja® ZX™-6 PARTS LIST

## Fuel Tank

ITEM NAME	PART NUMBER	QUANTITY
COVER,TANK CAP (Ref # 14024)	14025-1913	1
SWITCH,FUEL LEVEL (Ref # 27010)	27010-1096	1
BRACKET-TANK,RR (Ref # 32052)	32052-1302	1
BRACKET-TANK,FR (Ref # 32052A)	32052-1303	1
PAD,FUEL TANK,CNT (Ref # 39156)	39156-1204	1
PAD,FUEL TANK,RH (Ref # 39156A)	39156-1205	1
PAD,FUEL TANK,LH (Ref # 39156B)	39156-1206	1
DIAPHRAGM,TAP (Ref # 43028)	43028-1068	1
RING,FUEL LEVEL SWITCH (Ref # 43058)	43058-1004	1
TAP-ASSY,FUEL (Ref # 51023)	51023-1171	1
CAP-TANK,FUEL (Ref # 51049)	51049-1079	1
TRIM (Ref # 53044)	53044-1203	1
WASHER,5.2X10X1.5 (Ref # 92022)	92022-1023	2
WASHER,6.2X11X1.5 (Ref # 92022A)	92022-183	2
COLLAR,L=16.1 (Ref # 92027)	92027-1847	2
COLLAR,L=13.1 (Ref # 92027A)	92027-251	2
CLAMP,TUBE (Ref # 92037)	92037-010	1
RING-O,FUEL TAP PACKING (Ref # 92055)	92055-1112	1
RING-O,TAP BOTTOM (Ref # 92055A)	92055-1377	1
DAMPER (Ref # 92075)	92075-1690	2
SPRING,TAP DIAPHRAGM (Ref # 92144)	92144-1119	1
BOLT,FLANGED,6X16 (Ref # 92150)	92150-1358	2
DAMPER (Ref # 92160)	92160-1046	2
BOLT-SOCKET (Ref # 120)	120S0512	7
BOLT-FLANGED (Ref # 130)	130J0610	4
BOLT-FLANGED (Ref # 130A)	130J0620	4
BOLT-FLANGED,6X25 (Ref # 130B)	130J0625	2
SCREW-PAN-CROS (Ref # 220)	220C0508	1
SCREW-PAN-CROS (Ref # 220A)	220X0514	2

# 1990 Ninja® ZX™-6 PARTS LIST

## Fuel Tank

ITEM NAME	PART NUMBER	QUANTITY
SCREW-CSK-CROS,4X14 (Ref # 221)	221B0414	5
O RING,4MM (Ref # 670)	670B1504	1
TUBE-RUBBER,7X10X400 (Ref # 702)	702A07400	1
DAMPER,FUEL TANK (Ref # 92160A)	92160-1197	2
TANK-COMP-FUEL,C.A.BLUE (Ref # 51003)	51003-5167-HL	1
TANK-COMP-FUEL,C.C.RED (Ref # 51003A)	51003-5168-HR	1
TANK-COMP-FUEL,C.A.BLUE (Ref # 51003B)	51003-5169-FC	1
TANK-COMP-FUEL,C.A.BLUE (Ref # 51003C)	51003-5169-HL	1
TANK-COMP-FUEL,C.C.RED (Ref # 51003D)	51003-5170-HR	1
TANK-COMP-FUEL,C.C.RED (Ref # 51003E)	51003-5170-L1	1
SEAL,FUEL TANK CAP (Ref # 92093)	92093-1030	1