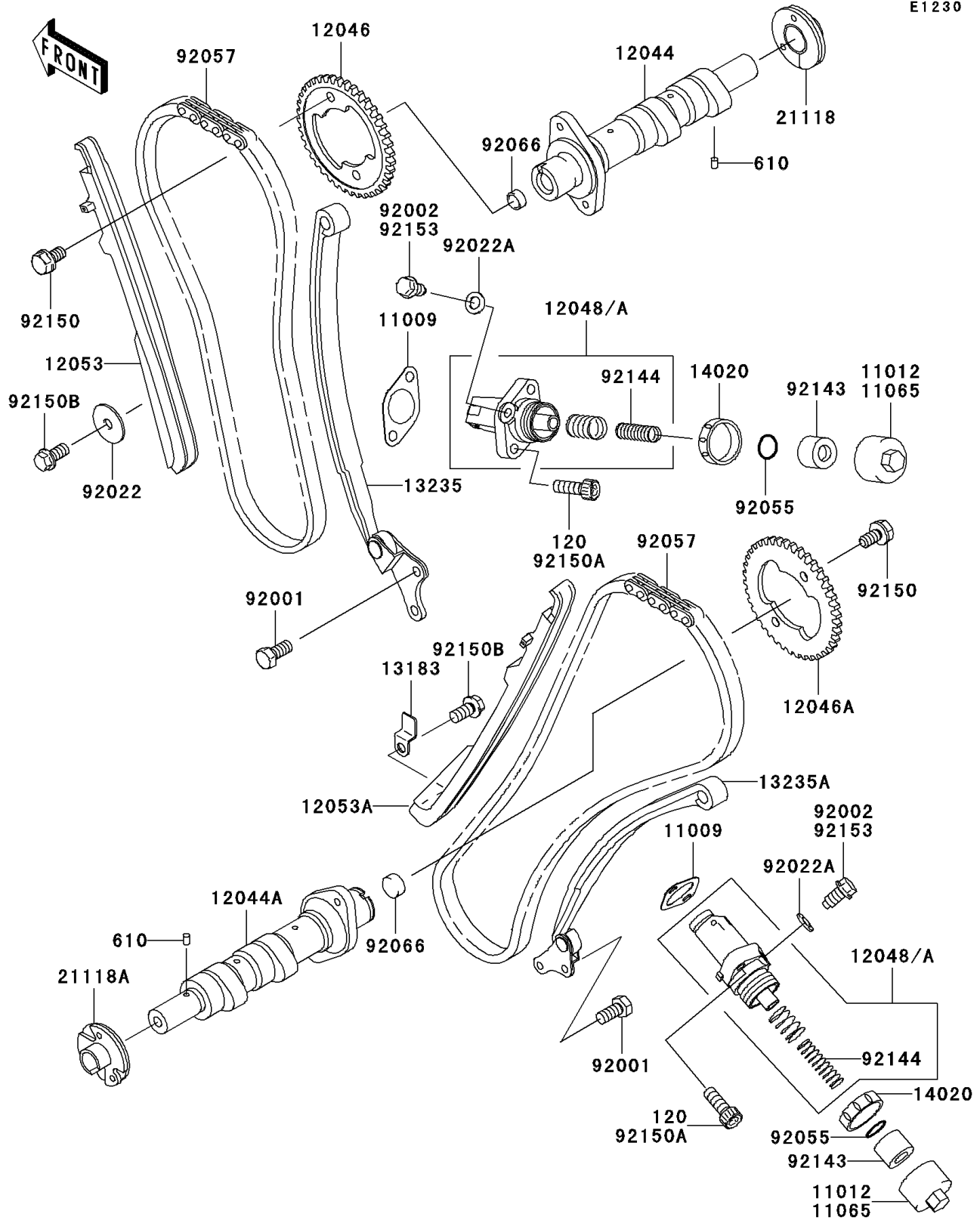


2004 Vulcan 1600 Classic PARTS DIAGRAM

Camshaft(s)/Tensioner

E1230



2004 Vulcan 1600 Classic PARTS LIST

Camshaft(s)/Tensioner

| ITEM NAME | PART NUMBER | QUANTITY |
|---|-------------|----------|
| BOLT-SOCKET,M6X20 (Ref # 120) | 120Z0620 | 4 |
| ROLLER,4X6 (Ref # 610) | 610A0406 | 2 |
| GASKET,TENSIONER (Ref # 11009) | 11009-1858 | 2 |
| CAP (Ref # 11065) | 11065-1128 | 2 |
| CAMSHAFT-VALVE,FR (Ref # 12044) | 12044-1200 | 1 |
| CAMSHAFT-VALVE,RR (Ref # 12044A) | 12044-1494 | 1 |
| SPROCKET,CAMSHAFT,FR,46T (Ref # 12046) | 12046-1175 | 1 |
| SPROCKET,CAMSHAFT,RR,46T (Ref # 12046A) | 12046-1176 | 1 |
| TENSIONER-ASSY (Ref # 12048) | 12048-0001 | 2 |
| GUIDE-CHAIN,FR,TENSIONER (Ref # 12053) | 12053-1219 | 1 |
| GUIDE-CHAIN,RR,TENSIONER (Ref # 12053A) | 12053-1221 | 1 |
| PLATE (Ref # 13183) | 13183-1096 | 1 |
| GUIDE-COMP,FR (Ref # 13235) | 13235-1070 | 1 |
| GUIDE-COMP,RR (Ref # 13235A) | 13235-1071 | 1 |
| RETAINER,TENSIONER (Ref # 14020) | 14020-1054 | 2 |
| DECOMPRESSOR,FR (Ref # 21118) | 21118-1061 | 1 |
| DECOMPRESSOR,RR (Ref # 21118A) | 21118-1085 | 1 |
| BOLT,6X16 (Ref # 92001) | 92001-1457 | 4 |
| WASHER,7X27X1.6 (Ref # 92022) | 92022-227 | 1 |
| WASHER,6.2X11X1 (Ref # 92022A) | 92022-304 | 2 |
| RING-O,TENSIONER (Ref # 92055) | 92055-1555 | 2 |
| CHAIN,CAM,92RH2010 (Ref # 92057) | 92057-1422 | 2 |
| PLUG (Ref # 92066) | 92066-1198 | 2 |
| COLLAR,TENSIONER (Ref # 92143) | 92143-1836 | 2 |
| SPRING,TENSIONER (Ref # 92144) | 92144-1921 | 2 |
| BOLT,FLANGED,6X11 (Ref # 92150) | 92150-1725 | 4 |
| BOLT,6X12 (Ref # 92150B) | 92150-1868 | 2 |
| BOLT,PIN (Ref # 92153) | 92153-0385 | 2 |