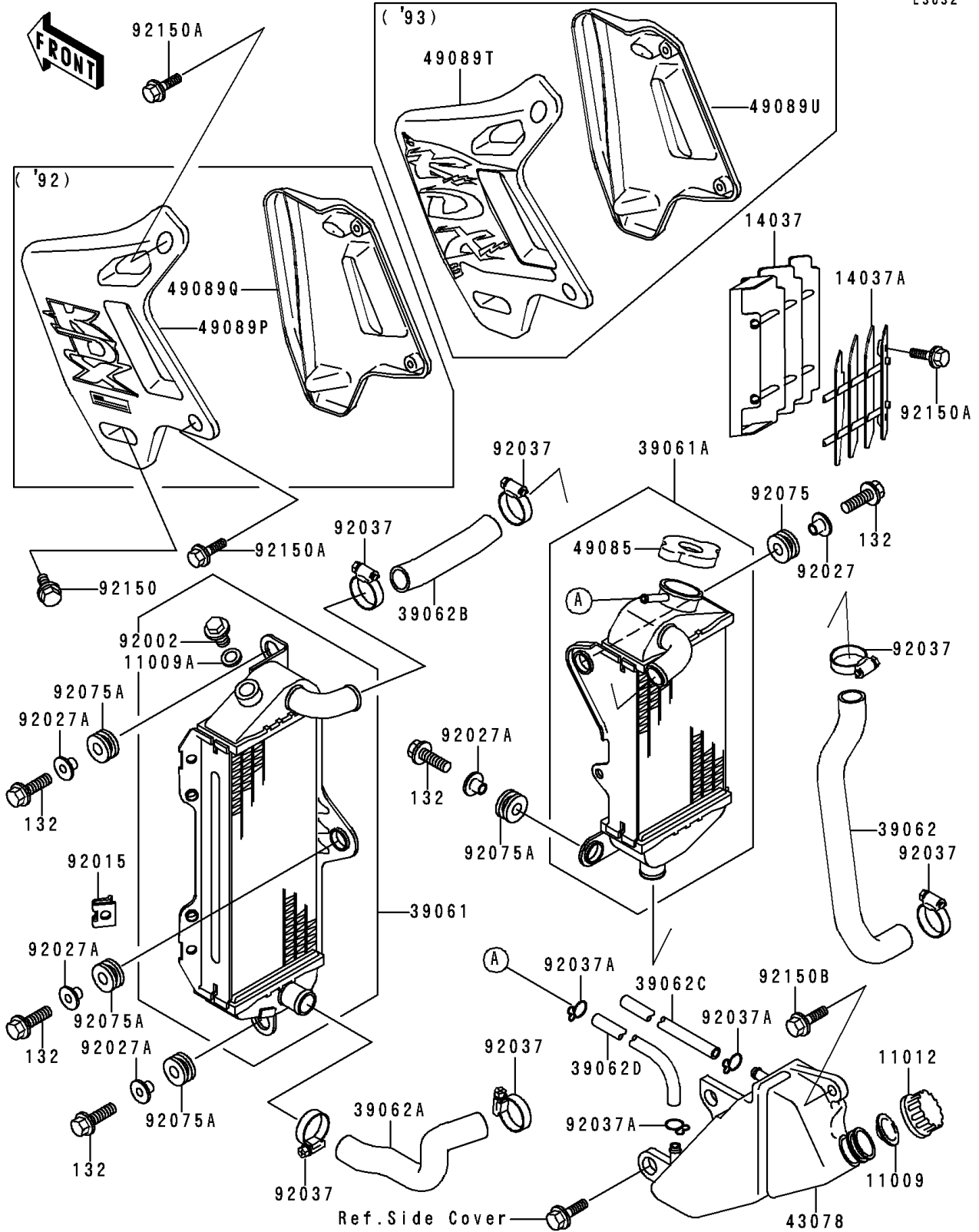


1992 KDX200 PARTS DIAGRAM

Radiator(KDX200-E4/E5)

E3032



1992 KDX200 PARTS LIST

Radiator(KDX200-E4/E5)

| ITEM NAME | PART NUMBER | QUANTITY |
|--|---------------|----------|
| GASKET,RESERVOIR TANK CAP (Ref # 11009) | 11009-1145 | 1 |
| GASKET,DRAIN BOLT (Ref # 11009A) | 11009-1152 | 1 |
| CAP (Ref # 11012) | 11012-1084 | 1 |
| SCREEN,L.GREEN (Ref # 14037) | 14037-1099-6W | 1 |
| SCREEN,RH,L.GREEN (Ref # 14037A) | 14037-1121-6W | 1 |
| RADIATOR-ASSY,LH (Ref # 39061) | 39061-1127 | 1 |
| RADIATOR-ASSY (Ref # 39061A) | 39061-1131 | 1 |
| HOSE-COOLING,RADIATOR-PUMP (Ref # 39062) | 39062-1300 | 1 |
| HOSE-COOLING,HEAD-RADIATOR (Ref # 39062A) | 39062-1301 | 1 |
| HOSE-COOLING,RADIATOR,LH-RH (Ref # 39062B) | 39062-1302 | 1 |
| HOSE-COOLING,5X9X420 (Ref # 39062C) | 39062-1315 | 1 |
| HOSE-COOLING,5X9X1050 (Ref # 39062D) | 39062-1334 | 1 |
| RESERVOIR (Ref # 43078) | 43078-1123 | 1 |
| CAP-ASSY-PRESSURE (Ref # 49085) | 49085-1066 | 1 |
| SHROUD-ENGINE,LH,L.GREEN (Ref # 49089P) | 49089-5143-6W | 1 |
| SHROUD-ENGINE,RH,L.GREEN (Ref # 49089Q) | 49089-5144-6W | 1 |
| BOLT,RADIATOR DRAIN (Ref # 92002) | 92002-1682 | 1 |
| NUT (Ref # 92015) | 92015-1487 | 1 |
| BOLT-FLANGED-SMALL (Ref # 132) | 132G0620 | 5 |
| COLLAR,L=9.6 (Ref # 92027) | 92027-1045 | 1 |
| COLLAR,L=11.1 (Ref # 92027A) | 92027-194 | 4 |
| CLAMP,COOLING HOSE (Ref # 92037) | 92037-1589 | 6 |
| CLAMP (Ref # 92037A) | 92037-1712 | 3 |
| DAMPER (Ref # 92075) | 92075-1185 | 1 |
| DAMPER (Ref # 92075A) | 92075-209 | 4 |
| BOLT,6X14 (Ref # 92150) | 92150-1392 | 2 |
| BOLT,6X12 (Ref # 92150A) | 92150-1435 | 5 |
| BOLT,FLANGED,6X14 (Ref # 92150B) | 92150-1504 | 2 |