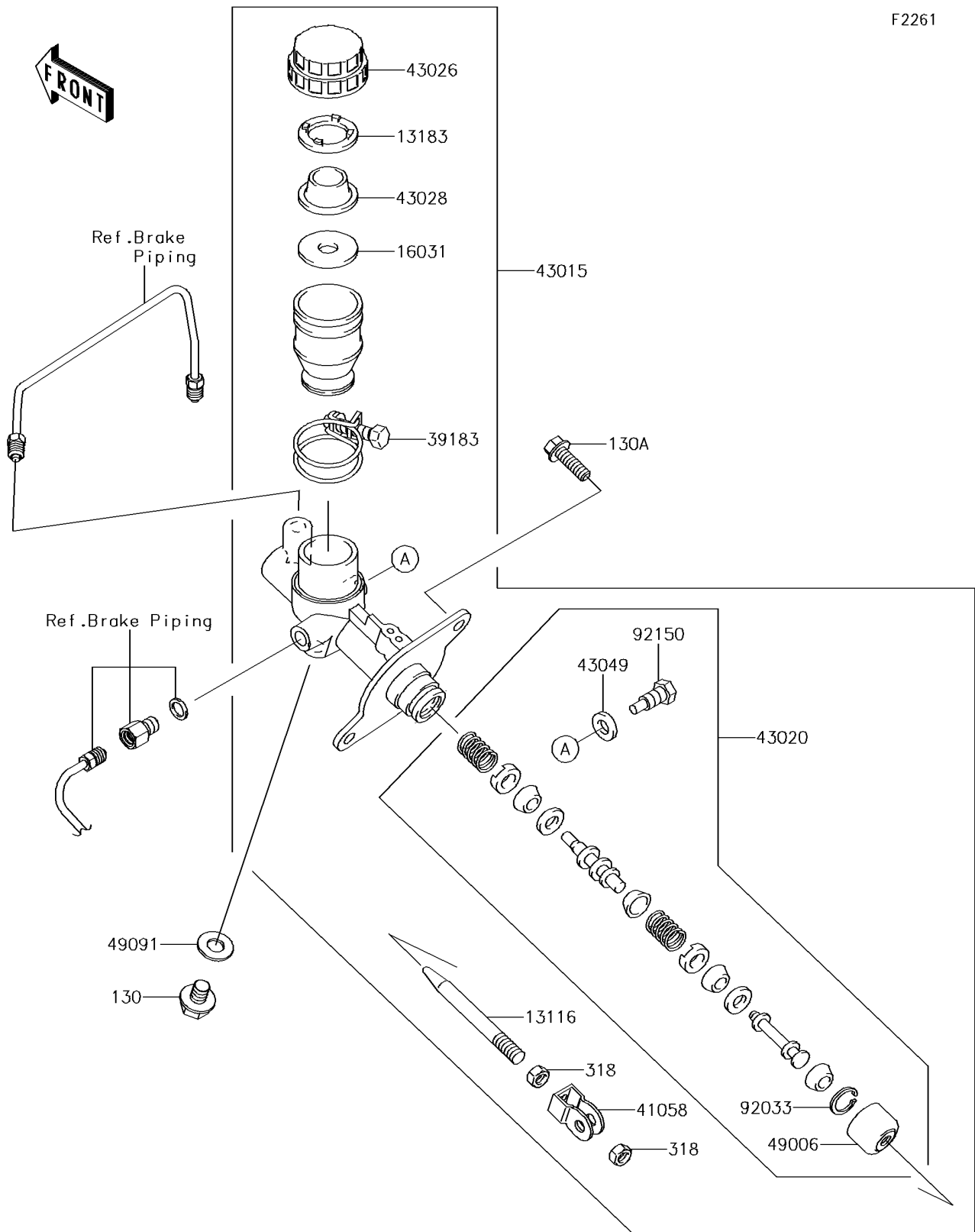


2017 TERYX[®] LE

PARTS DIAGRAM

Master Cylinder

F2261



2017 TERYX® LE

PARTS LIST

Master Cylinder

| ITEM NAME | PART NUMBER | QUANTITY |
|---|-------------|----------|
| ROD-PUSH (Ref # 13116) | 13116-1134 | 1 |
| PLATE (Ref # 13183) | 13183-1306 | 1 |
| FLOAT (Ref # 16031) | 16031-1069 | 1 |
| BAND-ASSY (Ref # 39183) | 39183-1055 | 1 |
| RODEND-BRAKE (Ref # 41058) | 41058-1057 | 1 |
| CYLINDER-ASSY-MASTER (Ref # 43015) | 43015-1683 | 1 |
| PISTON-COMP-BRAKE (Ref # 43020) | 43020-1124 | 1 |
| CAP-BRAKE (Ref # 43026) | 43026-1067 | 1 |
| DIAPHRAGM (Ref # 43028) | 43028-1078 | 1 |
| PACKING (Ref # 43049) | 43049-1065 | 1 |
| BOOT (Ref # 49006) | 49006-1245 | 1 |
| WASHER-SEAL,10.1X14.5X1.5 (Ref # 49091) | 49091-0001 | 1 |
| RING-SNAP (Ref # 92033) | 92033-1255 | 1 |
| BOLT,STOP (Ref # 92150) | 92150-1165 | 1 |
| BOLT-FLANGED,10X12 (Ref # 130) | 130AA1012 | 1 |
| BOLT-FLANGED,8X25 (Ref # 130A) | 130BA0825 | 2 |
| NUT-HEX-SMALL,8MM (Ref # 318) | 318BA0800 | 2 |