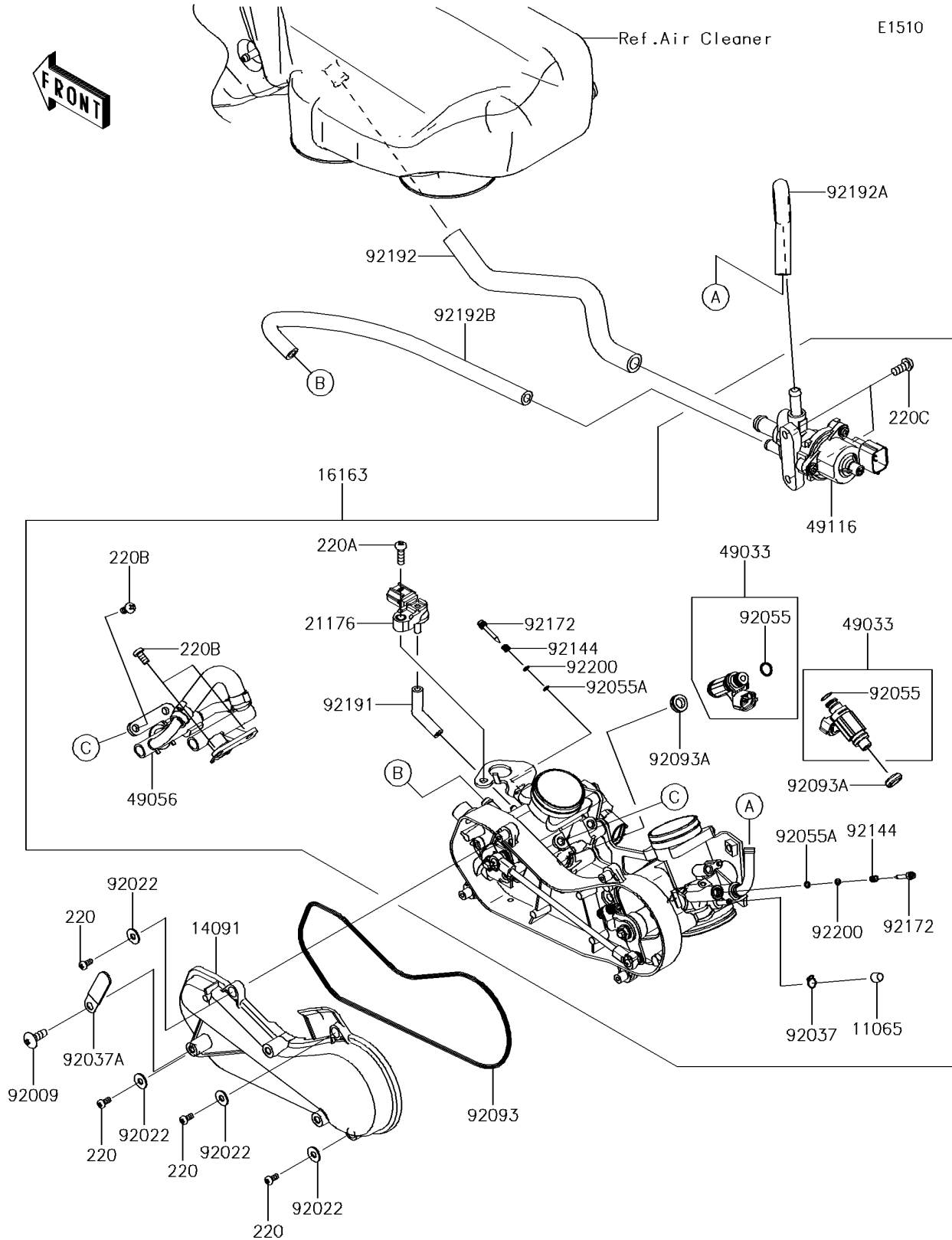


2018 TERYX4™ LE CAMO PARTS DIAGRAM

Throttle



2018 TERYX4™ LE CAMO PARTS LIST

Throttle

| ITEM NAME | PART NUMBER | QUANTITY |
|--|-------------|----------|
| CAP (Ref # 11065) | 11065-0072 | 1 |
| COVER,THROTTLE LINK (Ref # 14091) | 14091-1731 | 1 |
| THROTTLE-ASSY,36EIS (Ref # 16163) | 16163-0790 | 1 |
| SENSOR,PRESSURE (Ref # 21176) | 21176-0111 | 1 |
| NOZZLE-INJECTION (Ref # 49033) | 49033-0011 | 2 |
| PIPE-INJECTION (Ref # 49056) | 49056-0033 | 1 |
| VALVE-ASSY,ISC (Ref # 49116) | 49116-0021 | 1 |
| SCREW,6X12 (Ref # 92009) | 92009-1480 | 1 |
| WASHER,5.2X13X1 (Ref # 92022) | 92022-1380 | 4 |
| CLAMP,TUBE (Ref # 92037) | 92037-1124 | 1 |
| CLAMP,L=45 (Ref # 92037A) | 92037-1539 | 1 |
| RING-O,INJECTION NOZZLE (Ref # 92055) | 92055-1622 | 2 |
| RING-O,AIR SCREW (Ref # 92055A) | 92055-1658 | 2 |
| SEAL (Ref # 92093) | 92093-0082 | 1 |
| SEAL (Ref # 92093A) | 92093-0127 | 2 |
| SPRING,THROTTLE STOP SCREW (Ref # 92144) | 92144-1674 | 2 |
| SCREW (Ref # 92172) | 92172-0156 | 2 |
| TUBE,3.2X7.4X70 (Ref # 92191) | 92191-1552 | 1 |
| TUBE,ISC-CHAMBER (Ref # 92192) | 92192-0948 | 1 |
| TUBE,ISC-THROTTLE RR (Ref # 92192A) | 92192-1211 | 1 |
| TUBE,ISC-THROTTLE FR (Ref # 92192B) | 92192-1212 | 1 |
| WASHER,PILOT AIR SCREW (Ref # 92200) | 92200-1564 | 2 |
| SCREW-PAN-CROS,4X8 (Ref # 220) | 220AA0408 | 4 |
| SCREW-PAN-CROS,5X16 (Ref # 220A) | 220AA0516 | 1 |
| SCREW-PAN-CROS,6X12 (Ref # 220B) | 220AA0612 | 4 |
| SCREW-PAN-CROS,6X14 (Ref # 220C) | 220AA0614 | 2 |