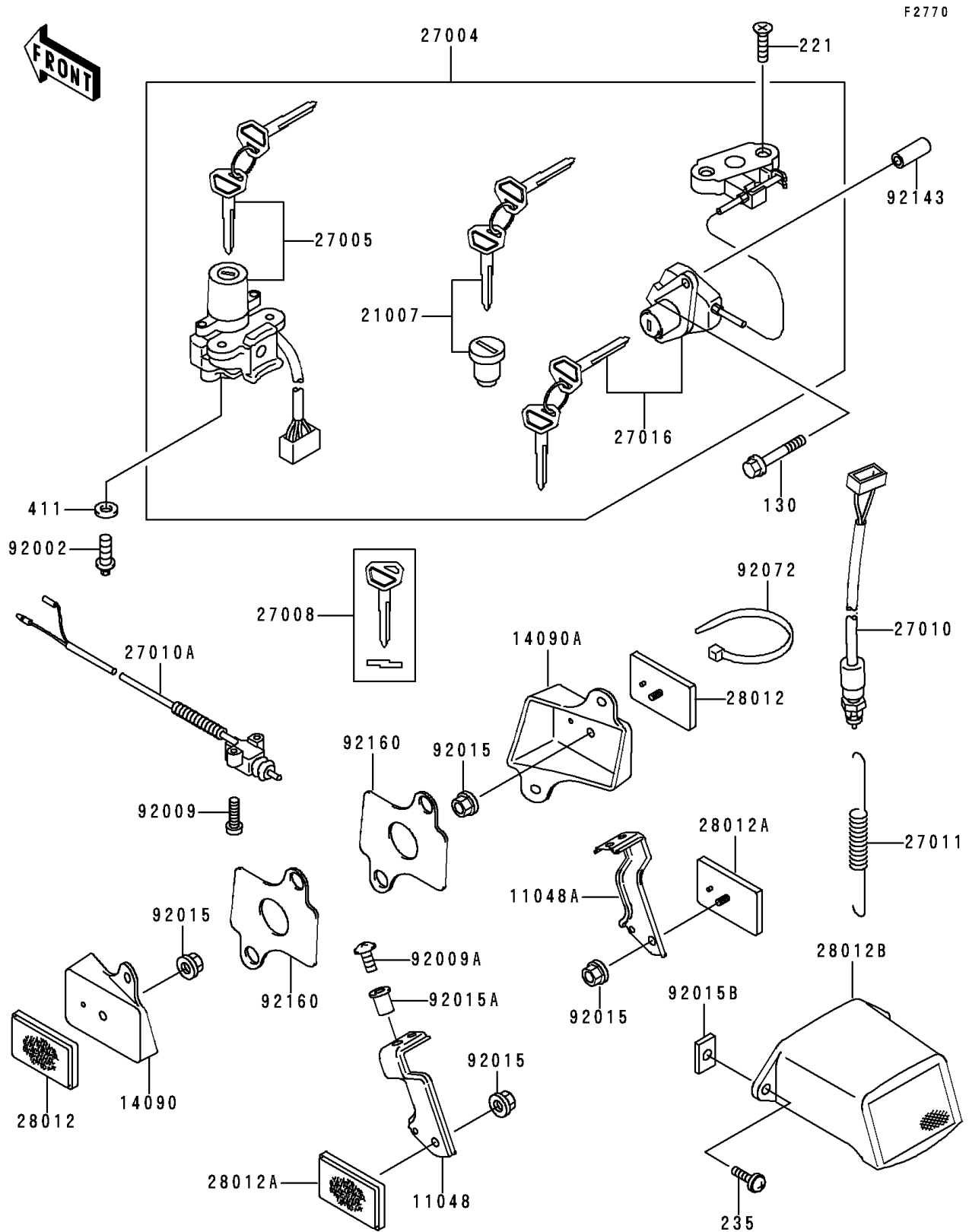


# 1995 Ninja® ZX™ -9R PARTS DIAGRAM

Ignition Switch/Locks/Reflectors



# 1995 Ninja® ZX™-9R PARTS LIST

## Ignition Switch/Locks/Reflectors

| ITEM NAME                              | PART NUMBER | QUANTITY |
|--|-------------|----------|
| BOLT-FLANGED,6X55,BLACK (Ref # 130)    | 130J0655    | 2        |
| SCREW-CSK-CROS,6X28 (Ref # 221)        | 221B0628    | 2        |
| SCREW-PAN-WP-CROS (Ref # 235)          | 235C0620    | 2        |
| WASHER-PLAIN,6MM (Ref # 411)           | 411E0600    | 2        |
| BRACKET,REFLECTOR,RR,LH (Ref # 11048)  | 11048-1783  | 1        |
| BRACKET,REFLECTOR,RR,RH (Ref # 11048A) | 11048-1784  | 1        |
| COVER,REFLECTOR,FR,LH (Ref # 14090)    | 14090-1377  | 1        |
| COVER,REFLECTOR,FR,RH (Ref # 14090A)   | 14090-1378  | 1        |
| ROTOR,LOCK,TANK CAP (Ref # 21007)      | 21007-5035  | 1        |
| SWITCH-ASSY (Ref # 27004)              | 27004-5473  | 1        |
| SWITCH-ASSY-IGNITION (Ref # 27005)     | 27005-1180  | 1        |
| KEY-LOCK,BLANK (Ref # 27008)           | 27008-1170  | 1        |
| SWITCH,BRAKE LAMP (Ref # 27010)        | 27010-1093  | 1        |
| SWITCH,SIDE STAND (Ref # 27010A)       | 27010-1223  | 1        |
| SPRING,BRAKE LAMP SWITCH (Ref # 27011) | 27011-017   | 1        |
| LOCK-ASSY,SEAT (Ref # 27016)           | 27016-5219  | 1        |
| REFLECTOR-REFLEX (Ref # 28012)         | 28012-1003  | 2        |
| REFLECTOR-REFLEX,RR (Ref # 28012A)     | 28012-1054  | 2        |
| REFLECTOR-REFLEX,RR (Ref # 28012B)     | 28012-1066  | 1        |
| BOLT,TORX,6X16 (Ref # 92002)           | 92002-1333  | 2        |
| SCREW,5X20 (Ref # 92009)               | 92009-1459  | 2        |
| SCREW,5X16 (Ref # 92009A)              | 92009-1654  | 2        |
| NUT,FLANGED,5MM (Ref # 92015)          | 92015-1259  | 4        |
| NUT,WELL,5MM (Ref # 92015A)            | 92015-1757  | 2        |
| NUT (Ref # 92015B)                     | 92015-1918  | 2        |
| BAND,L=185 (Ref # 92072)               | 92072-1195  | 1        |
| COLLAR,6.8X10X42 (Ref # 92143)         | 92143-1072  | 2        |
| DAMPER,REFLECTOR (Ref # 92160)         | 92160-1486  | 2        |