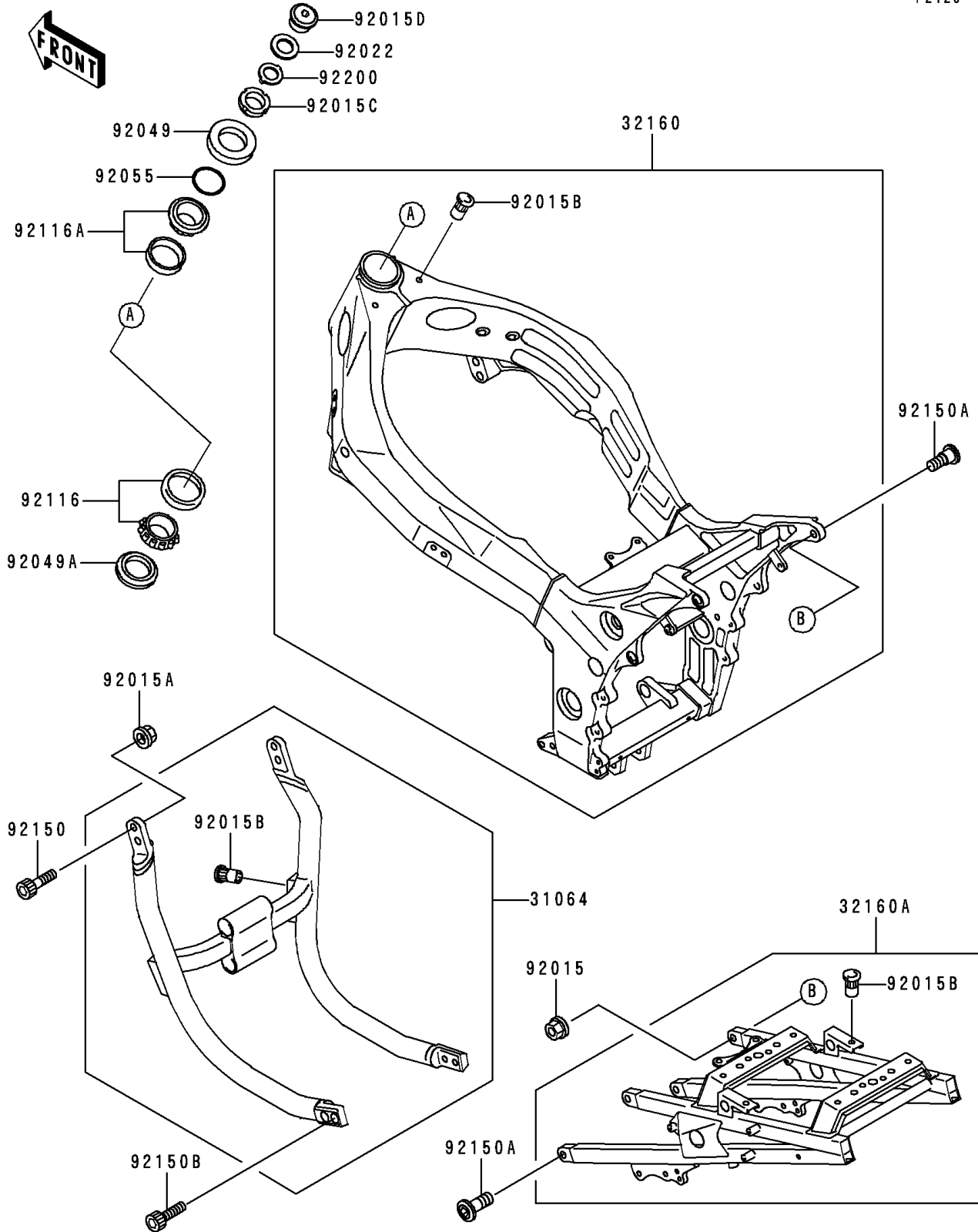


1994 Ninja® ZX™ -9R PARTS DIAGRAM

Frame

F2120



1994 Ninja® ZX™-9R PARTS LIST

Frame

| ITEM NAME | PART NUMBER | QUANTITY |
|---|---------------|----------|
| PIPE-COMP,DOWNTUBE (Ref # 31064) | 31064-1166 | 1 |
| FRAME-COMP,AL,FR,G.GRAY (Ref # 32160) | 32160-1330-GD | 1 |
| FRAME-COMP,AL,RR,G.GRAY (Ref # 32160A) | 32160-1332-GD | 1 |
| NUT,FLANGED,10MM (Ref # 92015) | 92015-1415 | 4 |
| NUT,FLANGED,10MM (Ref # 92015A) | 92015-1502 | 4 |
| NUT,POP,6MM,L=16.5 (Ref # 92015B) | 92015-1792 | 26 |
| NUT,STEERING STEM,35MM (Ref # 92015C) | 92015-1848 | 1 |
| NUT,STEERING,25MM (Ref # 92015D) | 92015-1891 | 1 |
| WASHER,25X36X2.3 (Ref # 92022) | 92022-250 | 1 |
| SEAL-OIL,XXMH 43 75 6.4J (Ref # 92049) | 92049-1382 | 1 |
| SEAL-OIL,XXMHE 43 55 4J (Ref # 92049A) | 92049-1383 | 1 |
| RING-O,34.5X2.0 (Ref # 92055) | 92055-1452 | 1 |
| BEARING-ROLLER,32907JR-2 (Ref # 92116) | 92116-1072 | 1 |
| BEARING-ROLLER,32907JR-3 (Ref # 92116A) | 92116-1074 | 1 |
| BOLT,SOCKET,10X37 (Ref # 92150) | 92150-1261 | 4 |
| BOLT,10X35 (Ref # 92150A) | 92150-1295 | 4 |
| BOLT,SOCKET,10X30 (Ref # 92150B) | 92150-1690 | 4 |
| WASHER,CLAW,25.5X40X2.3 (Ref # 92200) | 92200-1083 | 1 |