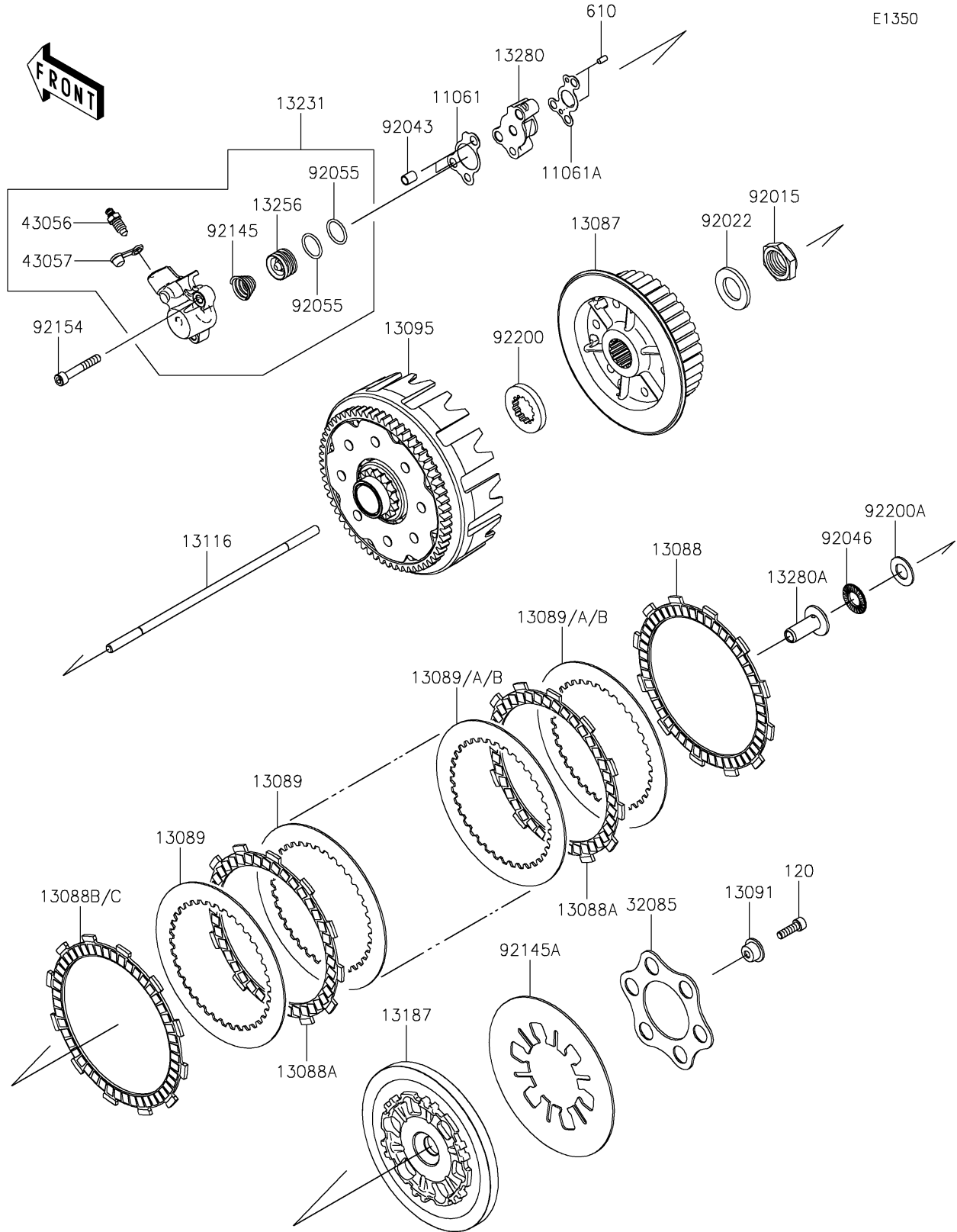


2025 KX450X PARTS DIAGRAM

Clutch



2025 KX450X PARTS LIST

Clutch

| ITEM NAME | PART NUMBER | QUANTITY |
|--|-------------|----------|
| GASKET,RELEASE SIDE (Ref # 11061) | 11061-1295 | 1 |
| GASKET,CRANKCASE SIDE (Ref # 11061A) | 11061-1296 | 1 |
| HUB-CLUTCH (Ref # 13087) | 13087-0592 | 1 |
| PLATE-FRICTION (Ref # 13088) | 13088-0573 | 1 |
| PLATE-FRICTION (Ref # 13088A) | 13088-0604 | 6 |
| PLATE-FRICTION (Ref # 13088B) | 13088-0605 | 1 |
| PLATE-FRICTION (Ref # 13088C) | 13088-0619 | 1 |
| PLATE-CLUTCH,T=1.6 (Ref # 13089) | 13089-0559 | 7 |
| PLATE-CLUTCH,T=2.0 (Ref # 13089A) | 13089-0561 | AR |
| PLATE-CLUTCH,T=1.4 (Ref # 13089B) | 13089-0562 | AR |
| HOLDER,CLUTCH SPRING (Ref # 13091) | 13091-1840 | 6 |
| HOUSING-COMP-CLUTCH (Ref # 13095) | 13095-0619 | 1 |
| ROD-PUSH (Ref # 13116) | 13116-0740 | 1 |
| PLATE-CLUTCH OPERATING (Ref # 13187) | 13187-0036 | 1 |
| RELEASE-ASSY-CLUTCH (Ref # 13231) | 13231-0010 | 1 |
| PISTON (Ref # 13256) | 13256-0009 | 1 |
| HOLDER,RELEASE BASE (Ref # 13280) | 13280-0916 | 1 |
| HOLDER,PUSHER (Ref # 13280A) | 13280-0919 | 1 |
| STOPPER (Ref # 32085) | 32085-0875 | 1 |
| BREATHER (Ref # 43056) | 43056-1055 | 1 |
| CAP-BREATHER (Ref # 43057) | 43057-1001 | 1 |
| NUT,20MM (Ref # 92015) | 92015-1725 | 1 |
| WASHER,20.3X36X3.7 (Ref # 92022) | 92022-1868 | 1 |
| PIN,DOWEL,8X10 (Ref # 92043) | 92043-1302 | 2 |
| BEARING-NEEDLE,FNTA-1326 (Ref # 92046) | 92046-1190 | 1 |
| RING-O (Ref # 92055) | 92055-0931 | 2 |
| SPRING (Ref # 92145) | 92145-1863 | 1 |
| SPRING (Ref # 92145A) | 92145-1942 | 1 |
| BOLT,SOCKET,6X40 (Ref # 92154) | 92154-3779 | 3 |

2025 KX450X PARTS LIST

Clutch

| ITEM NAME | PART NUMBER | QUANTITY |
|-------------------------------------|-------------|----------|
| WASHER,25X41X5.5 (Ref # 92200) | 92200-0245 | 1 |
| WASHER,13.4X25.0X1.5 (Ref # 92200A) | 92200-1548 | 1 |
| BOLT-SOCKET,6X20 (Ref # 120) | 120Q0620 | 6 |
| ROLLER,4X8 (Ref # 610) | 610A0408 | 2 |