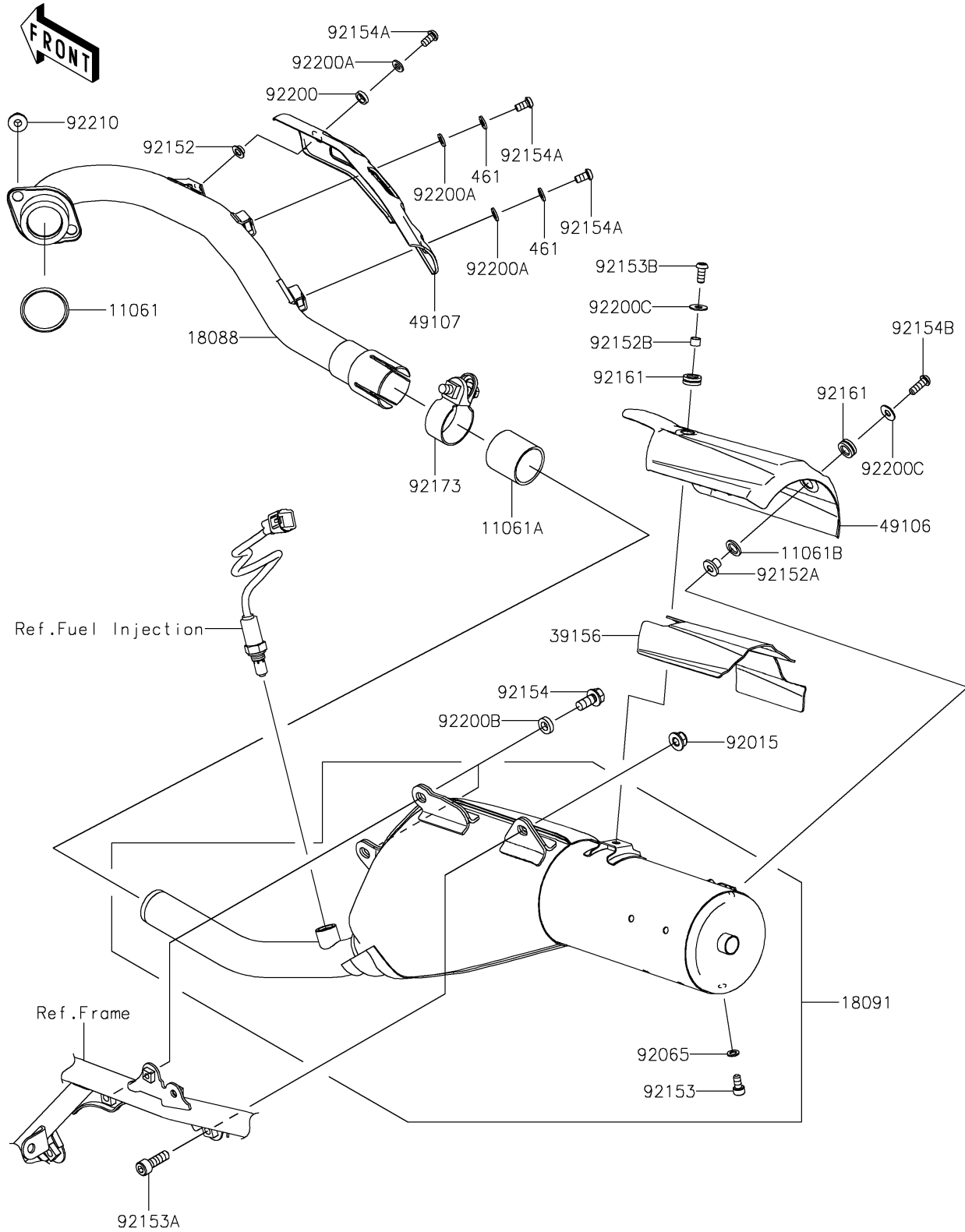


2026 KLX300 PARTS DIAGRAM

Muffler(s)

E1140



2026 KLX300 PARTS LIST

Muffler(s)

| ITEM NAME | PART NUMBER | QUANTITY |
|---|-------------|----------|
| GASKET,EX PIPE (Ref # 11061) | 11061-0027 | 1 |
| GASKET,EXHAUST PIPE CONNECTING (Ref # 11061A) | 11061-1055 | 1 |
| GASKET (Ref # 11061B) | 11061-1398 | 1 |
| PIPE-EXHAUST (Ref # 18088) | 18088-1475 | 1 |
| BODY-COMP-MUFFLER (Ref # 18091) | 18091-1294 | 1 |
| PAD,MUFFLER COVER (Ref # 39156) | 39156-2880 | 1 |
| COVER-MUFFLER (Ref # 49106) | 49106-0856 | 1 |
| COVER-EXHAUST PIPE (Ref # 49107) | 49107-0826 | 1 |
| NUT,8MM (Ref # 92015) | 92015-1432 | 1 |
| GASKET (Ref # 92065) | 92065-096 | 1 |
| COLLAR,6.2X8.5X13 (Ref # 92152) | 92152-2662 | 1 |
| COLLAR (Ref # 92152A) | 92152-2814 | 1 |
| COLLAR,6.5X8.5X6 (Ref # 92152B) | 92152-2817 | 1 |
| BOLT,SOCKET,6X12 (Ref # 92153) | 92153-1347 | 1 |
| BOLT,SOCKET,8X25 (Ref # 92153A) | 92153-1350 | 1 |
| BOLT,SOCKET,6X14 (Ref # 92153B) | 92153-1886 | 1 |
| BOLT-FLANGED,8X14 (Ref # 92154) | 92154-3782 | 2 |
| BOLT,SOCKET,6X11.5 (Ref # 92154A) | 92154-4087 | 3 |
| BOLT,SOCKET,6X18 (Ref # 92154B) | 92154-4279 | 1 |
| DAMPER (Ref # 92161) | 92161-1475 | 2 |
| CLAMP,38MM (Ref # 92173) | 92173-0997 | 1 |
| WASHER,8.8X12.5X3 (Ref # 92200) | 92200-2306 | 1 |
| WASHER,6.2X12X1.6 (Ref # 92200A) | 92200-2320 | 3 |
| WASHER,8.1X15X4.0 (Ref # 92200B) | 92200-2482 | 2 |
| WASHER,6.5X16X1.0 (Ref # 92200C) | 92200-3712 | 2 |
| NUT,8MM (Ref # 92210) | 92210-0076 | 2 |
| WASHER-SPRING,6MM (Ref # 461) | 461S0600 | 2 |