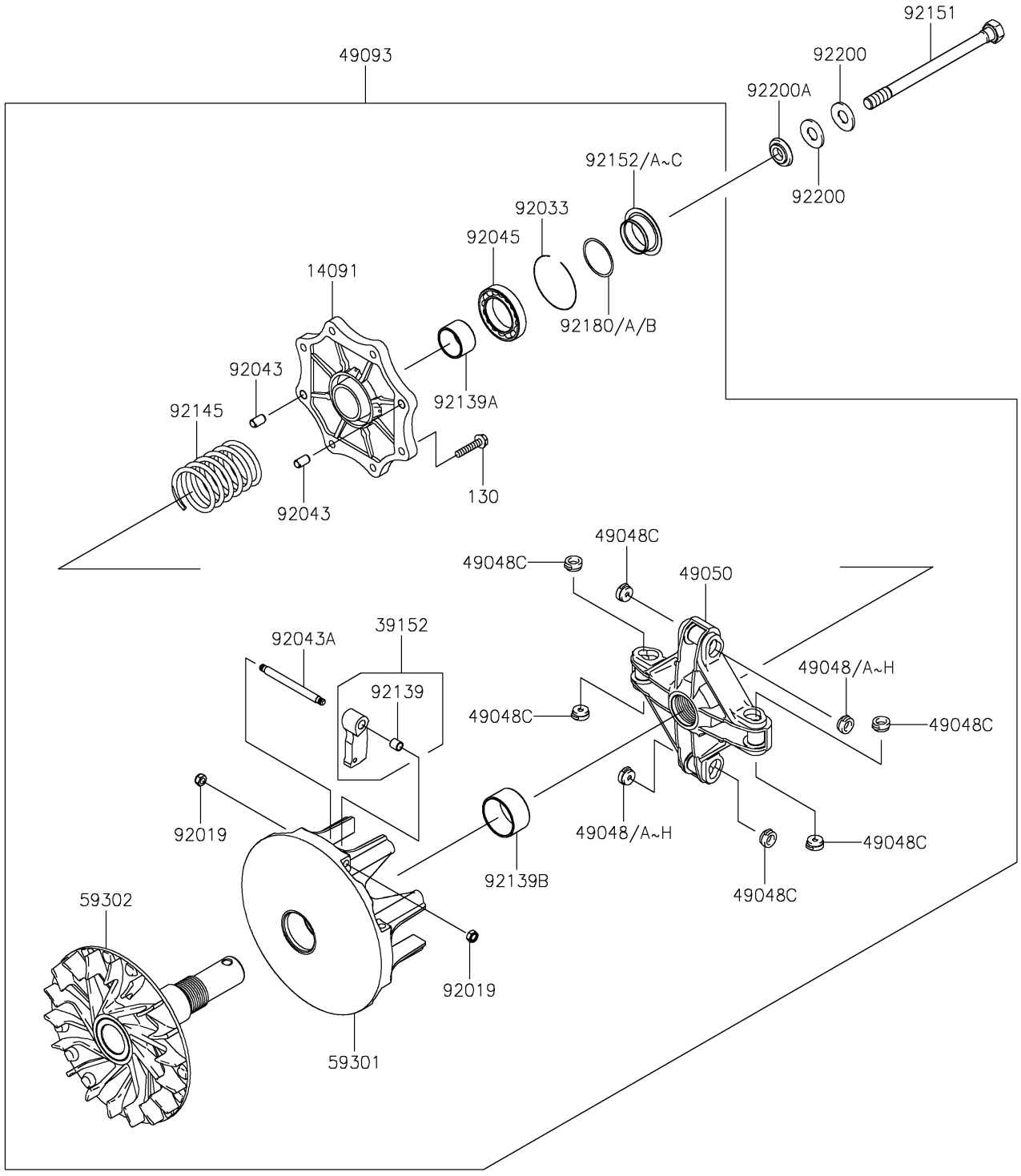


2024 BRUTE FORCE® 750 LE EPS CAMO PARTS DIAGRAM

Drive Converter

E1391



2024 BRUTE FORCE® 750 LE EPS CAMO PARTS LIST

Drive Converter

ITEM NAME	PART NUMBER	QUANTITY
COVER (Ref # 14091)	14091-1804	1
WEIGHT-RAMP (Ref # 39152)	39152-0034	4
SHOE,T=7.2 (Ref # 49048)	49048-1087	AR
SHOE,T=7.3 (Ref # 49048A)	49048-1088	AR
SHOE,T=7.4 (Ref # 49048B)	49048-1089	AR
SHOE,T=7.5 (Ref # 49048C)	49048-1090	8
SHOE,T=7.6 (Ref # 49048D)	49048-1091	AR
SHOE,T=7.7 (Ref # 49048E)	49048-1092	AR
SHOE,T=7.8 (Ref # 49048F)	49048-1093	AR
SHOE,T=7.9 (Ref # 49048G)	49048-1094	AR
SHOE,T=8.0 (Ref # 49048H)	49048-1095	AR
SPIDER (Ref # 49050)	49050-0010	1
CONVERTER-ASSY-DRIVE (Ref # 49093)	49093-0087	1
SHEAVE-MOVABLE (Ref # 59301)	59301-0007	1
SHEAVE-COMP,FIXED (Ref # 59302)	59302-0078	1
NUT,LOCK,6MM (Ref # 92019)	92019-008	8
RING-SNAP (Ref # 92033)	92033-0063	1
PIN,6.2X8X14 (Ref # 92043)	92043-1263	2
PIN (Ref # 92043A)	92043-1688	4
BEARING-BALL,6907DDG8C4 S6NS (Ref # 92045)	92045-1453	1
BUSHING (Ref # 92139)	92139-0215	4
BUSHING (Ref # 92139A)	92139-1243	1
BUSHING (Ref # 92139B)	92139-1244	1
SPRING (Ref # 92145)	92145-0794	1
BOLT,12X165 (Ref # 92151)	92151-1393	1
COLLAR,T=1.6 (Ref # 92152)	92152-1436	AR
COLLAR,T=3.0 (Ref # 92152A)	92152-1437	AR
COLLAR,T=2.3 (Ref # 92152B)	92152-1438	AR
COLLAR,T=3.7 (Ref # 92152C)	92152-1440	AR

2024 BRUTE FORCE® 750 LE EPS CAMO PARTS LIST

Drive Converter

ITEM NAME	PART NUMBER	QUANTITY
SHIM,35X40X0.10 (Ref # 92180)	92180-1378	AR
SHIM,35X40X0.20 (Ref # 92180A)	92180-1379	AR
SHIM,35X40X0.30 (Ref # 92180B)	92180-1380	AR
WASHER,SPRING (Ref # 92200)	92200-1504	2
WASHER (Ref # 92200A)	92200-1634	1
BOLT-FLANGED,6X30 (Ref # 130)	130CA0630	8