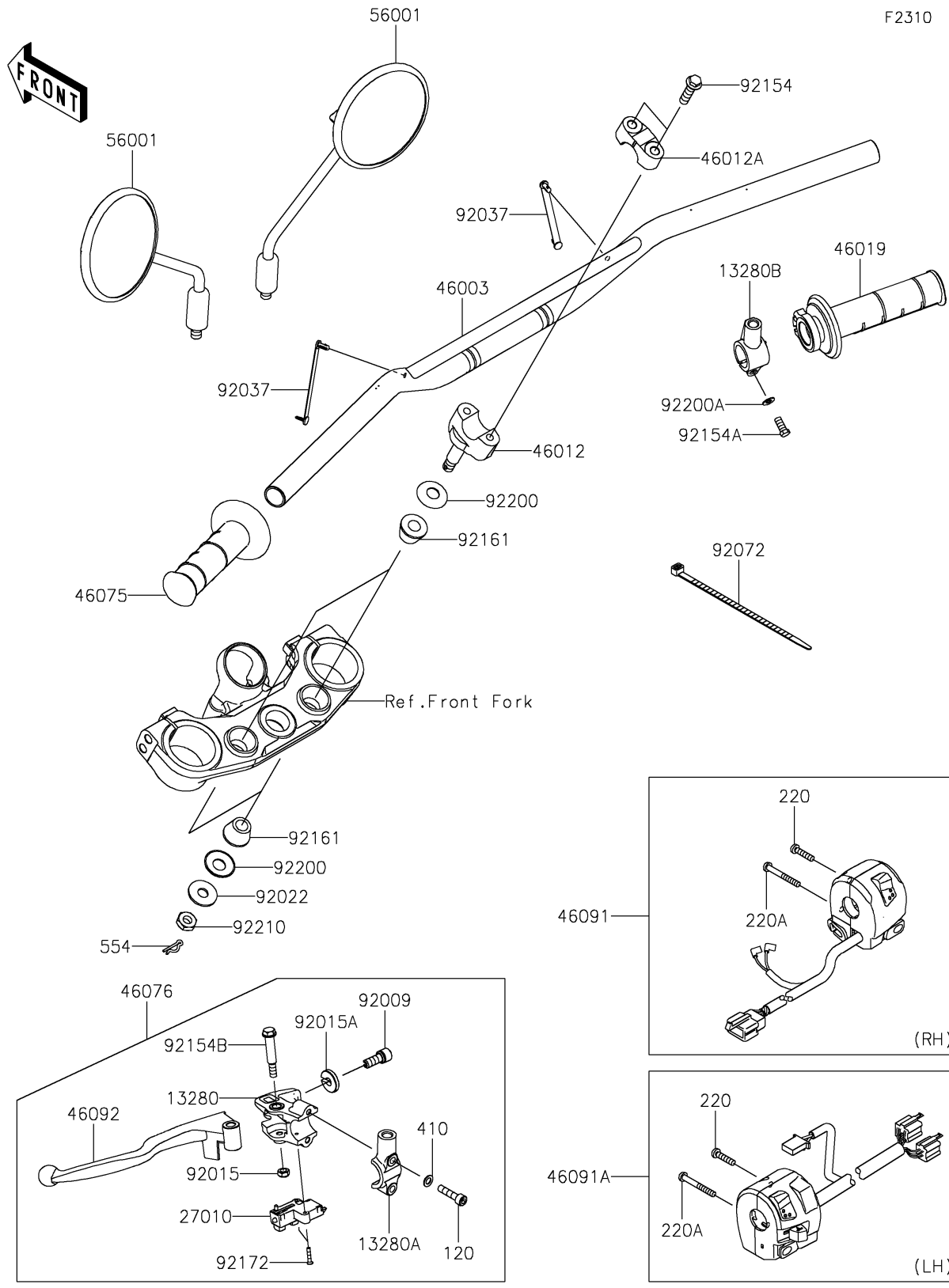


2023 KLX® 230SM PARTS DIAGRAM

Handlebar



2023 KLX® 230SM PARTS LIST

Handlebar

ITEM NAME	PART NUMBER	QUANTITY
HOLDER,LEVER (Ref # 13280)	13280-0929	1
HOLDER,MIRROR (Ref # 13280A)	13280-0930	1
HOLDER,MIRROR (Ref # 13280B)	13280-1000	1
SWITCH,CLUTCH (Ref # 27010)	27010-0729	1
HANDLE,F.S.BLACK (Ref # 46003)	46003-0795-18R	1
HOLDER-HANDLE,LWR,M.F.S.BLACK (Ref # 46012)	46012-0075-21P	2
HOLDER-HANDLE,UPP,M.F.S.BLACK (Ref # 46012A)	46012-0380-21P	2
GRIP-ASSY,THROTTLE (Ref # 46019)	46019-0088	1
GRIP,LH (Ref # 46075)	46075-0644	1
LEVER-ASSY-GRIP,CLUTCH (Ref # 46076)	46076-0160	1
HOUSING-ASSY-CONTROL,RH (Ref # 46091)	46091-0452	1
HOUSING-ASSY-CONTROL,LH (Ref # 46091A)	46091-0455	1
LEVER-GRIP,CLUTCH (Ref # 46092)	46092-0576	1
MIRROR-ASSY (Ref # 56001)	56001-0419	2
SCREW,CABLE ADJUST,8MM,BLACK (Ref # 92009)	92009-1134	1
NUT,LOCK,6MM,BLACK (Ref # 92015)	92015-1191	1
NUT,CABLE ADJUST LOCK,8MM,BLK (Ref # 92015A)	92015-1197	1
WASHER,10.2X28X2 (Ref # 92022)	92022-1088	2
CLAMP,SPEED,L=80.5 (Ref # 92037)	92037-1903	2
BAND,L=152 (Ref # 92072)	92072-3874	1
BOLT,FLANGED,8X30 (Ref # 92154)	92154-1246	4
BOLT,UPSET,6X22 (Ref # 92154A)	92154-1422	1
BOLT,FLANGED,6X44 (Ref # 92154B)	92154-2331	1
DAMPER,12X26X19 (Ref # 92161)	92161-2116	4
SCREW,3X16 (Ref # 92172)	92172-0183	2
WASHER,12.5X27.6X1.2 (Ref # 92200)	92200-0872	4
WASHER,6.5X11.5X0.8 (Ref # 92200A)	92200-0947	1
NUT,LOCK,10MM (Ref # 92210)	92210-1672	2
BOLT-SOCKET,6X25 (Ref # 120)	120CB0625	2

2023 KLX® 230SM PARTS LIST

Handlebar

ITEM NAME	PART NUMBER	QUANTITY
SCREW-PAN-CROS,5X22 (Ref # 220)	220AB0522	2
SCREW-PAN-CROS,5X40 (Ref # 220A)	220AB0540	2
WASHER-PLAIN-SMALL,6MM (Ref # 410)	410AB0600	2
PIN-SNAP (Ref # 554)	554DA0800	2