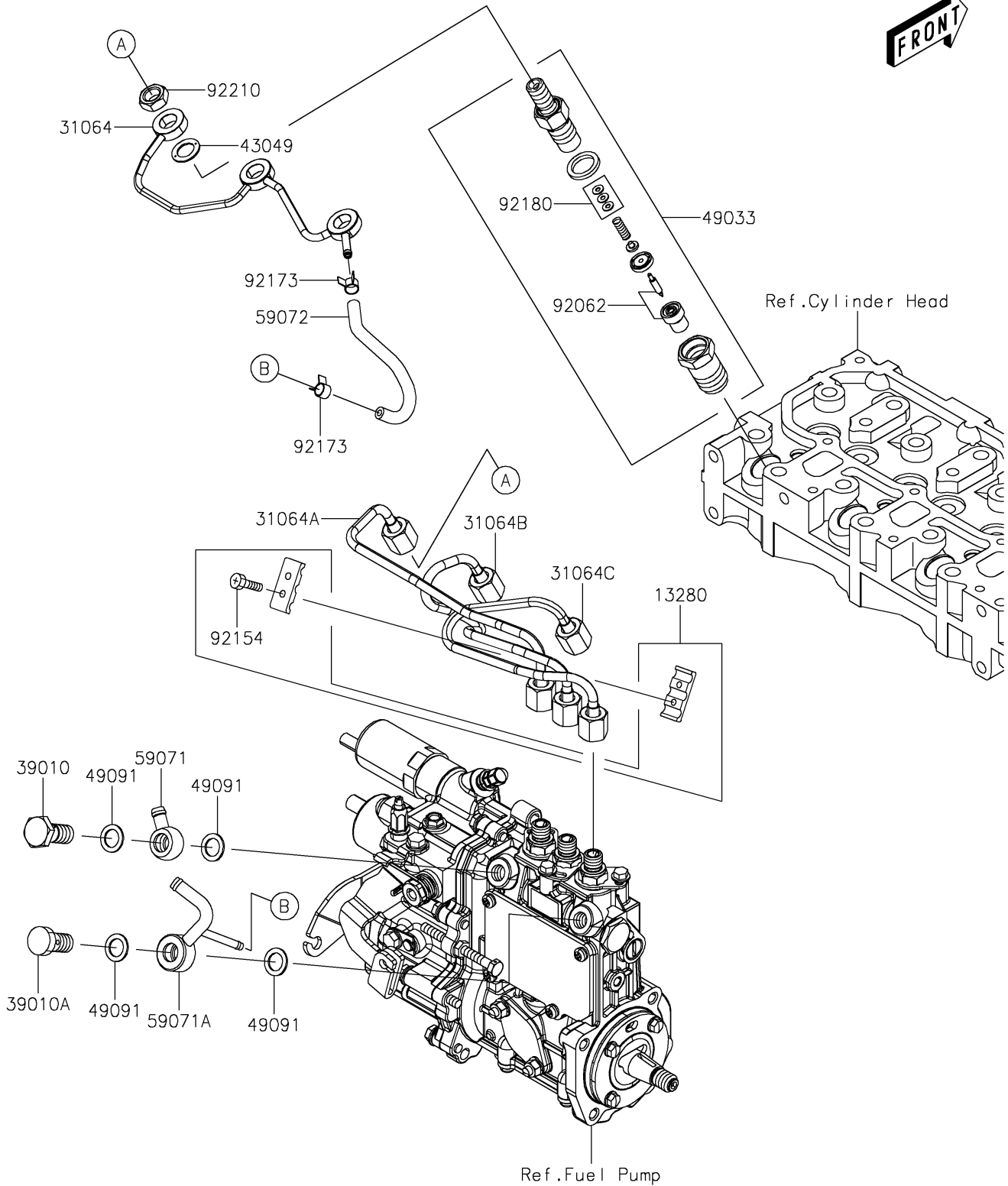


2023 MULE PRO-DXT™ EPS DIESEL FE PARTS DIAGRAM

Fuel Injection

E1530



2023 MULE PRO-DXT™ EPS DIESEL FE PARTS LIST

Fuel Injection

| ITEM NAME | PART NUMBER | QUANTITY |
|---|-------------|----------|
| HOLDER (Ref # 13280) | 13280-0862 | 1 |
| PIPE-COMP,RETURN (Ref # 31064) | 31064-0681 | 1 |
| PIPE-COMP,INJECTION,NO.1 (Ref # 31064A) | 31064-0682 | 1 |
| PIPE-COMP,INJECTION,NO.2 (Ref # 31064B) | 31064-0683 | 1 |
| PIPE-COMP,INJECTION,NO.3 (Ref # 31064C) | 31064-0684 | 1 |
| BOLT-EYE,PIPE JOINT (Ref # 39010) | 39010-0001 | 1 |
| BOLT-EYE,PIPE JOINT (Ref # 39010A) | 39010-0002 | 1 |
| PACKING (Ref # 43049) | 43049-0045 | 3 |
| NOZZLE-INJECTION (Ref # 49033) | 49033-0039 | 3 |
| WASHER-SEAL (Ref # 49091) | 49091-0007 | 4 |
| JOINT (Ref # 59071) | 59071-0738 | 1 |
| JOINT,OVER FLOW (Ref # 59071A) | 59071-0739 | 1 |
| JOINT-EYE (Ref # 59072) | 59072-0004 | 1 |
| NOZZLE (Ref # 92062) | 92062-0038 | 3 |
| BOLT,4X14 (Ref # 92154) | 92154-2115 | 2 |
| CLAMP (Ref # 92173) | 92173-1551 | 2 |
| SHIM,SET (Ref # 92180) | 92180-0971 | 3 |
| NUT (Ref # 92210) | 92210-1469 | 3 |