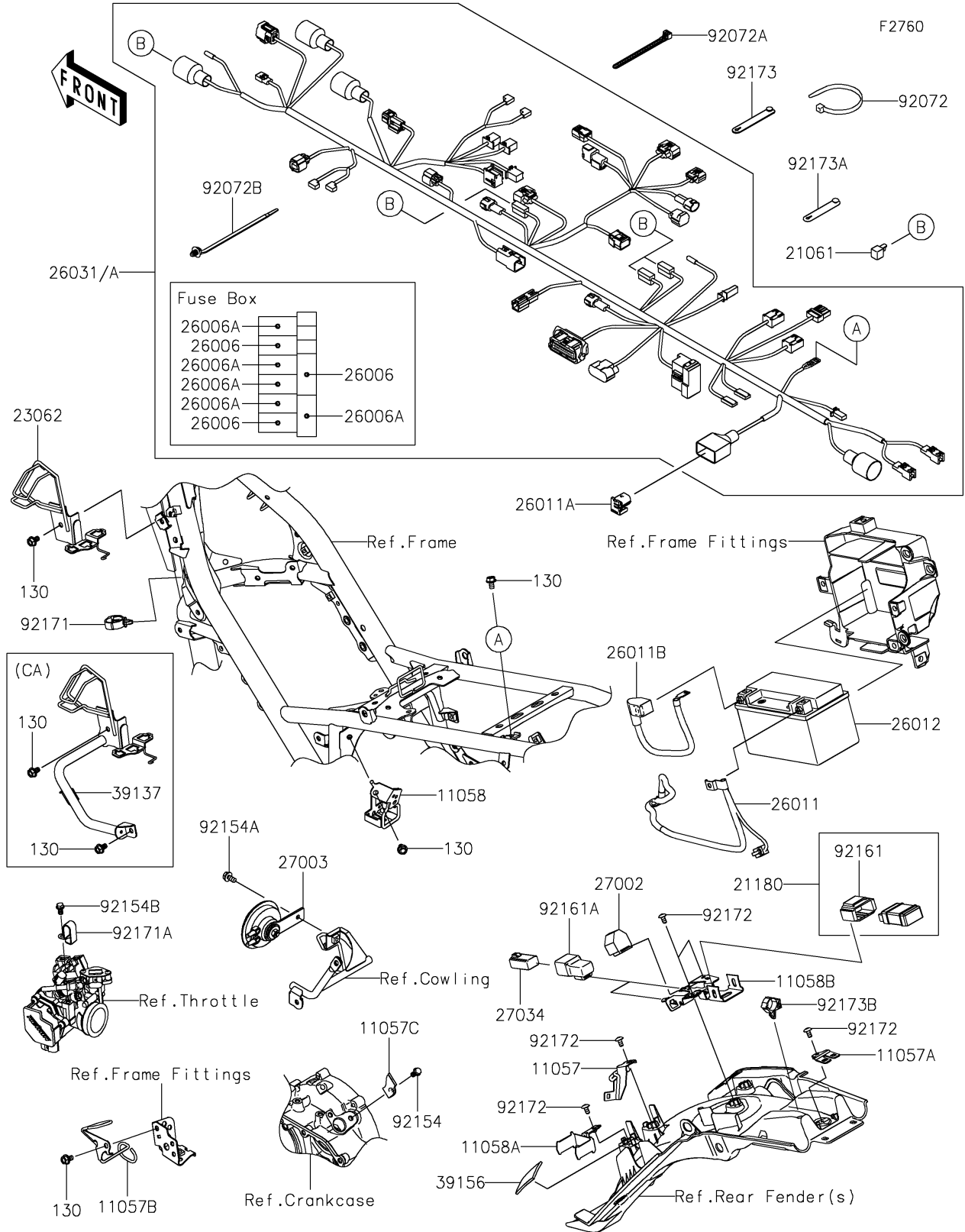


2025 KLX® 230 S PARTS DIAGRAM

Chassis Electrical Equipment



2025 KLX® 230 S PARTS LIST

Chassis Electrical Equipment

ITEM NAME	PART NUMBER	QUANTITY
BRACKET,FUSE BOX (Ref # 11057)	11057-2350	1
BRACKET,RR HARNESS (Ref # 11057A)	11057-2351	1
BRACKET (Ref # 11057B)	11057-2463	1
BRACKET (Ref # 11057C)	11057-7929	1
BRACKET (Ref # 11058)	11058-1293	1
BRACKET (Ref # 11058A)	11058-1296	1
BRACKET (Ref # 11058B)	11058-1299	1
RECTIFIER (Ref # 21061)	21061-1003	4
TRANSCEIVER,BLUETOOTH (Ref # 21180)	21180-0007	1
BRACKET-COMP (Ref # 23062)	23062-1511	1
FUSE,MINI BLADE,15A,BLUE (Ref # 26006)	26006-0001	3
FUSE,MINI BLADE,10A,RED (Ref # 26006A)	26006-1078	5
WIRE-LEAD,BATTERY(-) (Ref # 26011)	26011-2456	1
WIRE-LEAD,DIAG CONNECTOR (Ref # 26011A)	26011-2468	1
WIRE-LEAD,BATTERY(+) (Ref # 26011B)	26011-2492	1
BATTERY,YTX7A-BS,12V 6.3AH (Ref # 26012)	26012-0989	1
HARNESS,MAIN (Ref # 26031)	26031-4408	1
HARNESS,MAIN (Ref # 26031A)	26031-4409	1
RELAY-ASSY,TURN SIGNAL (Ref # 27002)	27002-0031	1
HORN (Ref # 27003)	27003-0166	1
RELAY (Ref # 27034)	27034-0012	2
STAY-COMP (Ref # 39137)	39137-0746	1
PAD,55X30X5 (Ref # 39156)	39156-2451	1
BAND,L=152 (Ref # 92072)	92072-0948	1
BAND,L=140 (Ref # 92072A)	92072-0949	1
BAND,OS170-FT7(BLACK) (Ref # 92072B)	92072-1414	AR
BOLT,FLANGED,6X12 (Ref # 92154)	92154-1776	1
BOLT,FLANGED,6X12 (Ref # 92154A)	92154-2776	1
BOLT,FLANGED,6X10 (Ref # 92154B)	92154-7280	1

2025 KLX® 230 S PARTS LIST

Chassis Electrical Equipment

ITEM NAME	PART NUMBER	QUANTITY
DAMPER (Ref # 92161)	92161-2516	1
DAMPER,RELAY (Ref # 92161A)	92161-2546	2
CLAMP,20MM DIA. (Ref # 92171)	92171-0069	1
CLAMP (Ref # 92171A)	92171-0911	1
SCREW,CROS,5X10 (Ref # 92172)	92172-1255	5
CLAMP (Ref # 92173)	92173-2194	1
CLAMP (Ref # 92173A)	92173-2199	2
CLAMP (Ref # 92173B)	92173-2737	1
BOLT-FLANGED,6X10 (Ref # 130)	130BA0610	5
BOLT-FLANGED,6X10 (Ref # 130)	130BA0610	4