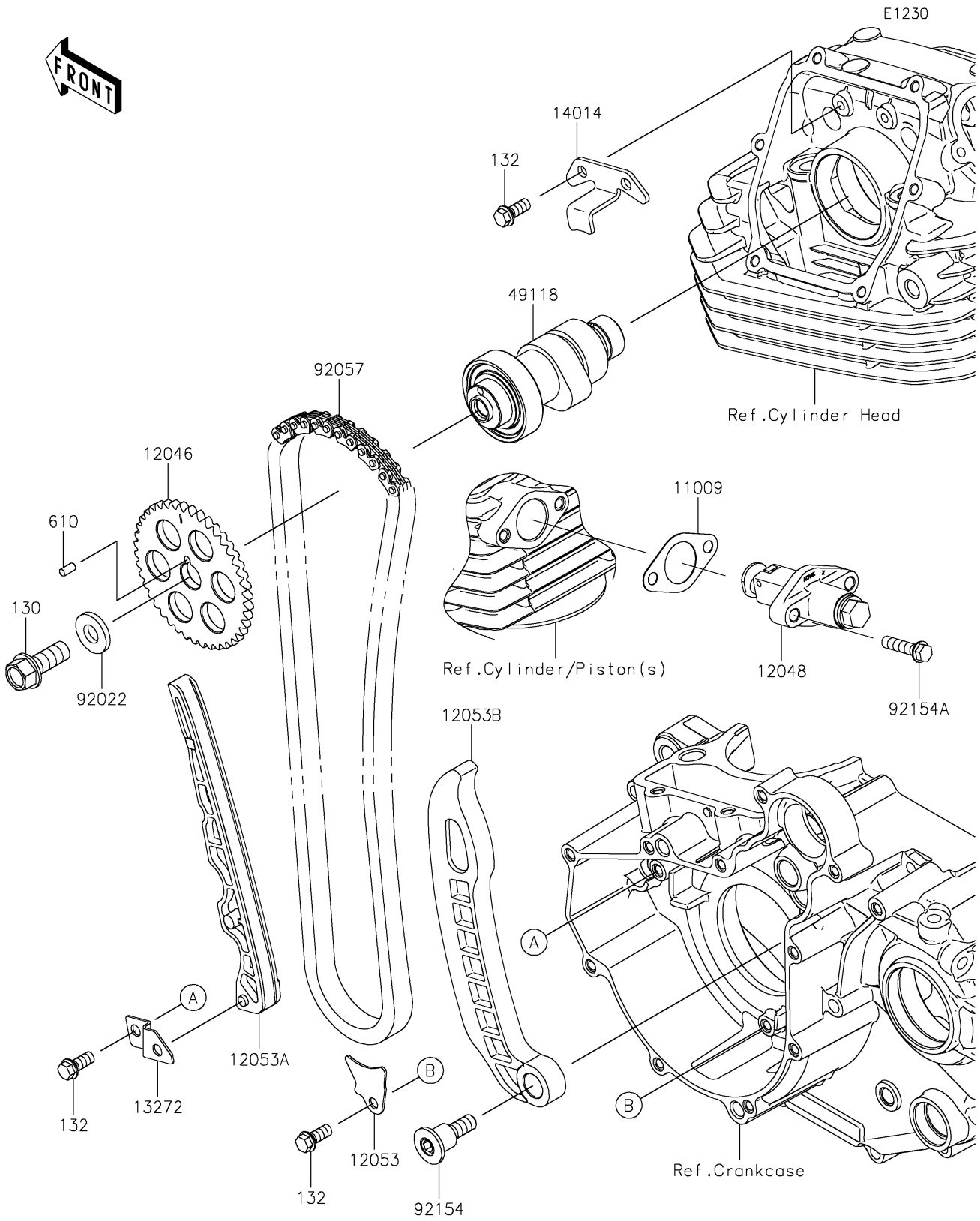


2024 KLX230 S PARTS DIAGRAM

Camshaft(s)/Tensioner



2024 KLX230 S PARTS LIST

Camshaft(s)/Tensioner

| ITEM NAME | PART NUMBER | QUANTITY |
|---|-------------|----------|
| GASKET,TENSIONER (Ref # 11009) | 11009-1858 | 1 |
| SPROCKET,42T (Ref # 12046) | 12046-0615 | 1 |
| TENSIONER-ASSY (Ref # 12048) | 12048-0127 | 1 |
| GUIDE-CHAIN,LWR (Ref # 12053) | 12053-0275 | 1 |
| GUIDE-CHAIN,FR (Ref # 12053A) | 12053-0315 | 1 |
| GUIDE-CHAIN,RR (Ref # 12053B) | 12053-0316 | 1 |
| PLATE,CHAIN GUIDE (Ref # 13272) | 13272-2626 | 1 |
| PLATE-POSITION (Ref # 14014) | 14014-0578 | 1 |
| CAMSHAFT-COMP (Ref # 49118) | 49118-0970 | 1 |
| WASHER,10X22X3 (Ref # 92022) | 92022-1365 | 1 |
| CHAIN,CAM,SCZ-0407SV-110L (Ref # 92057) | 92057-0949 | 1 |
| BOLT (Ref # 92154) | 92154-1307 | 1 |
| BOLT,FLANGED-SMALL,6X25 (Ref # 92154A) | 92154-7471 | 2 |
| BOLT-FLANGED,10X25 (Ref # 130) | 130BA1025 | 1 |
| BOLT-FLANGED-SMALL,6X14 (Ref # 132) | 132BD0614 | 4 |
| ROLLER,4X8 (Ref # 610) | 610A0408 | 1 |