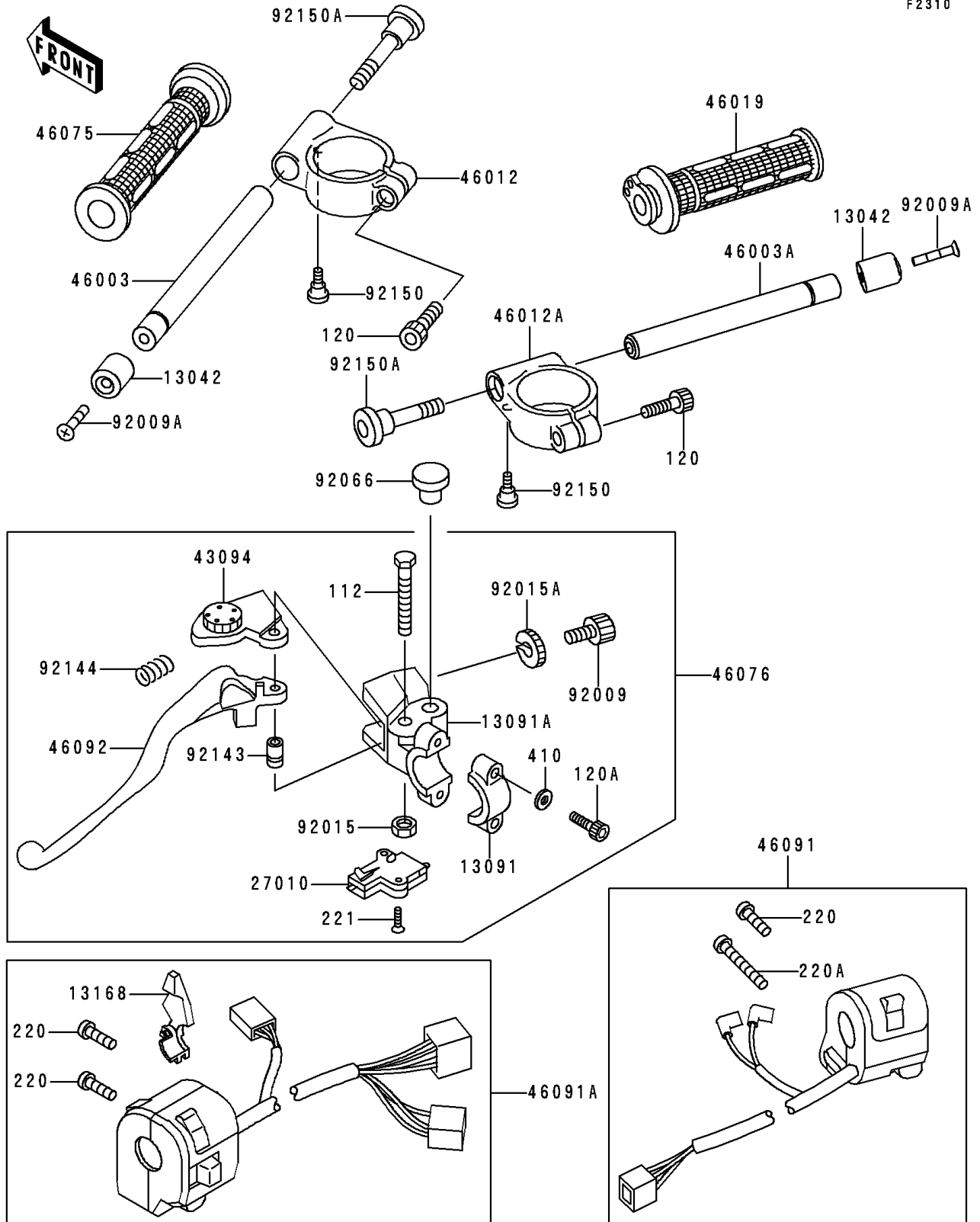


1996 Ninja® ZX™-6R PARTS DIAGRAM

Handlebar

F2310



1996 Ninja® ZX™-6R PARTS LIST

Handlebar

| ITEM NAME | PART NUMBER | QUANTITY |
|--|-------------|----------|
| BOLT-UPSET (Ref # 112) | 112C0640 | 1 |
| BOLT-SOCKET,8X30 (Ref # 120) | 120P0830 | 1 |
| BOLT-SOCKET,6X20 (Ref # 120A) | 120S0620 | 1 |
| SCREW-PAN-CROS (Ref # 220) | 220C0525 | 1 |
| SCREW-PAN-CROS (Ref # 220A) | 220C0540 | 1 |
| SCREW-CSK-CROS (Ref # 221) | 221C0316 | 1 |
| WASHER-PLAIN-SMALL,6MM,BLACK (Ref # 410) | 410F0600 | 1 |
| WEIGHT,HANDLE (Ref # 13042) | 13042-1069 | 1 |
| HOLDER,CLUTCH LEVER (Ref # 13091) | 13091-1624 | 1 |
| HOLDER,CLUTCH LEVER (Ref # 13091A) | 13091-1652 | 1 |
| LEVER,CHOKE (Ref # 13168) | 13168-1516 | 1 |
| SWITCH,CLUTCH,BLACK (Ref # 27010) | 27010-1094 | 1 |
| ADJUSTER,CLUTCH LEVER (Ref # 43094) | 43094-1053 | 1 |
| HANDLE,LH (Ref # 46003) | 46003-1388 | 1 |
| HANDLE,RH (Ref # 46003A) | 46003-1389 | 1 |
| HOLDER-HANDLE,LH (Ref # 46012) | 46012-1260 | 1 |
| HOLDER-HANDLE,RH (Ref # 46012A) | 46012-1261 | 1 |
| GRIP-ASSY,THROTTLE (Ref # 46019) | 46019-1077 | 1 |
| GRIP,LH (Ref # 46075) | 46075-1088 | 1 |
| LEVER-ASSY-GRIP,CLUTCH (Ref # 46076) | 46076-1165 | 1 |
| HOUSING-ASSY-CONTROL,RH (Ref # 46091) | 46091-1663 | 1 |
| HOUSING-ASSY-CONTROL,LH (Ref # 46091A) | 46091-1664 | 1 |
| LEVER-GRIP,CLUTCH (Ref # 46092) | 46092-1161 | 1 |
| SCREW,CABLE ADJUST,8MM,BLACK (Ref # 92009) | 92009-1134 | 1 |
| SCREW,8X45 (Ref # 92009A) | 92009-1257 | 1 |
| NUT,LOCK,6MM,BLACK (Ref # 92015) | 92015-1191 | 1 |
| NUT,CABLE ADJUST LOCK,8MM,BLK (Ref # 92015A) | 92015-1197 | 1 |
| PLUG,9.5X8,POLYETHYLENE (Ref # 92066) | 92066-1077 | 1 |
| COLLAR (Ref # 92143) | 92143-1379 | 1 |

1996 Ninja® ZX™-6R PARTS LIST

Handlebar

| ITEM NAME | PART NUMBER | QUANTITY |
|----------------------------------|-------------|----------|
| SPRING (Ref # 92144) | 92144-1467 | 1 |
| BOLT,6MM (Ref # 92150) | 92150-1090 | 1 |
| BOLT,SOCKET,10X37 (Ref # 92150A) | 92150-1469 | 1 |