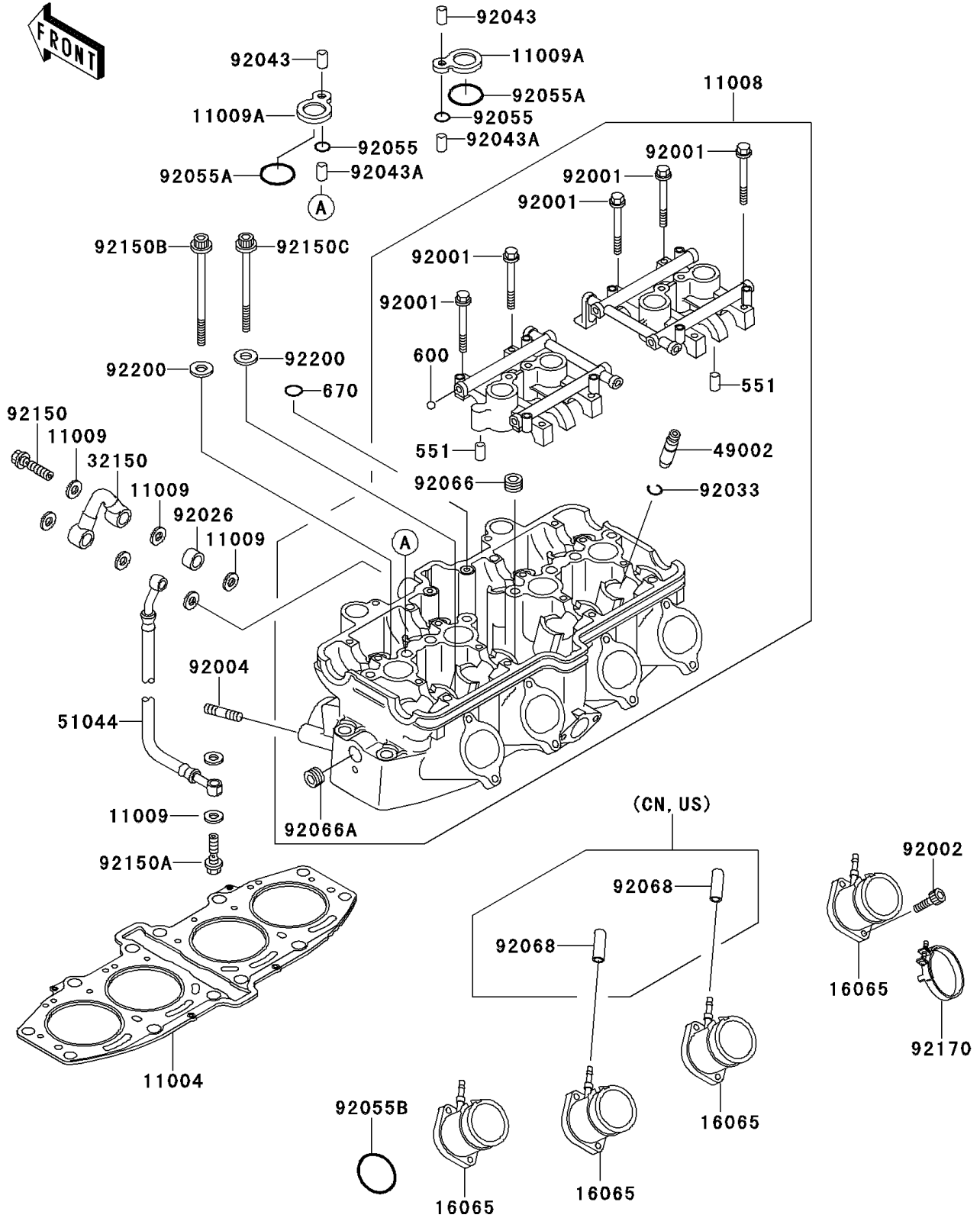


2000 Ninja® ZX™-6 PARTS DIAGRAM

Cylinder Head

E1111



2000 Ninja® ZX™-6 PARTS LIST

Cylinder Head

ITEM NAME	PART NUMBER	QUANTITY
PIN-DOWEL,6X12 (Ref # 551)	551A0612	4
BALL-STEEL,9/32" (Ref # 600)	600A0900	12
O RING,8MM (Ref # 670)	670D1508	2
GASKET-HEAD (Ref # 11004)	11004-1245	1
HEAD-COMP-CYLINDER (Ref # 11008)	11008-1273	1
GASKET,10X14.5X1.5 (Ref # 11009)	11009-1105	8
GASKET,SPARK PLUG (Ref # 11009A)	11009-1990	4
HOLDER-CARBURETOR (Ref # 16065)	16065-1276	4
PIPE,HEAD (Ref # 32150)	32150-1621	1
GUIDE-VALVE (Ref # 49002)	49002-1121	AR
TUBE-ASSY,HEAD-OIL PAN (Ref # 51044)	51044-1121	1
BOLT,FLANGED,6X38 (Ref # 92001)	92001-1105	16
BOLT,SOCKET,6X14 (Ref # 92002)	92002-1175	8
STUD,8X18 (Ref # 92004)	92004-1186	8
SPACER,10.5X15.1X10 (Ref # 92026)	92026-1393	1
RING-SNAP (Ref # 92033)	92033-1247	16
PIN,6.2X8X14 (Ref # 92043)	92043-1263	4
PIN,8.2X10X14 (Ref # 92043A)	92043-1264	4
RING-O,11.5X1.5 (Ref # 92055)	92055-1469	4
RING-O (Ref # 92055A)	92055-1470	4
RING-O,42X1.9 (Ref # 92055B)	92055-1519	4
PLUG,PT1/2X12.5 (Ref # 92066)	92066-1253	4
PLUG,PT3/8X10 (Ref # 92066A)	92066-1346	2
BOLT,BANJO,10X37 (Ref # 92150)	92150-1122	2
BOLT,BANJO,10X23 (Ref # 92150A)	92150-1123	1
BOLT,10X165 (Ref # 92150B)	92150-1368	2
BOLT,10X151 (Ref # 92150C)	92150-1369	10
CLAMP (Ref # 92170)	92170-1908	4
WASHER,10.5X19X2.3 (Ref # 92200)	92200-1042	12

2000 Ninja® ZX™-6 PARTS LIST

Cylinder Head

ITEM NAME	PART NUMBER	QUANTITY
PLUG,12X25 (Ref # 92068)	92068-006	2