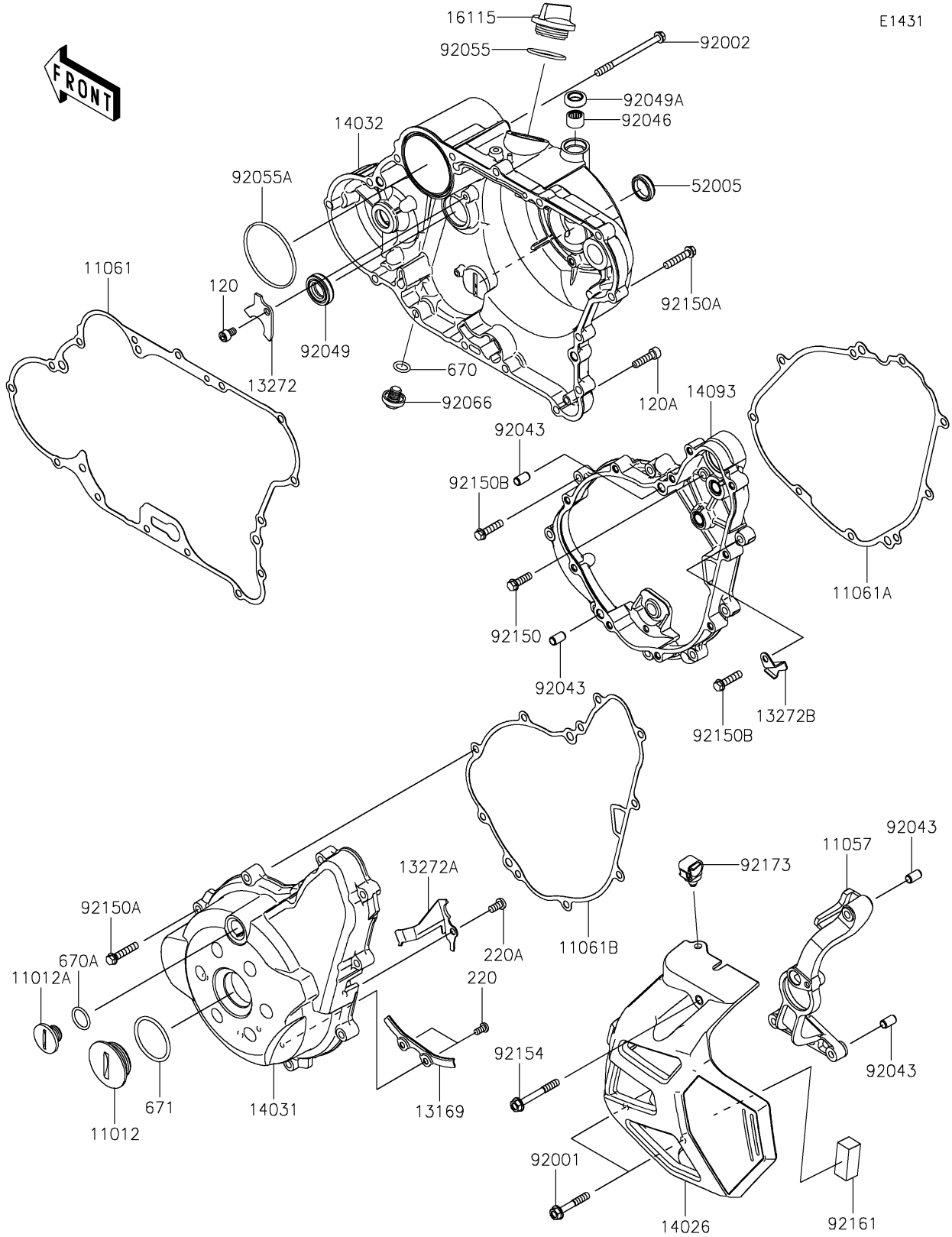


2024 KLR® 650 PARTS DIAGRAM

Engine Cover(s)



2024 KLR® 650 PARTS LIST

Engine Cover(s)

| ITEM NAME | PART NUMBER | QUANTITY |
|---|-------------|----------|
| CAP (Ref # 11012) | 11012-1362 | 1 |
| CAP, TOP MARK (Ref # 11012A) | 11012-1363 | 1 |
| BRACKET, SPEED SENSOR (Ref # 11057) | 11057-4312 | 1 |
| GASKET, CLUTCH COVER (Ref # 11061) | 11061-0429 | 1 |
| GASKET, GENERATOR CASE COVER (Ref # 11061A) | 11061-1486 | 1 |
| GASKET, GENERATOR COVER (Ref # 11061B) | 11061-1487 | 1 |
| PLATE, PULSING COIL LEAD (Ref # 13169) | 13169-1882 | 1 |
| PLATE, OIL SEAL (Ref # 13272) | 13272-0863 | 1 |
| PLATE, GENERATOR (Ref # 13272A) | 13272-0869 | 1 |
| PLATE, GENERATOR (Ref # 13272B) | 13272-3871 | 1 |
| COVER-CHAIN (Ref # 14026) | 14026-0153 | 1 |
| COVER-GENERATOR (Ref # 14031) | 14031-0126 | 1 |
| COVER-CLUTCH (Ref # 14032) | 14032-0674 | 1 |
| COVER, GENERATOR CASE (Ref # 14093) | 14093-1080 | 1 |
| CAP-OIL FILLER (Ref # 16115) | 16115-1068 | 1 |
| GAUGE, OIL LEVEL (Ref # 52005) | 52005-1009 | 1 |
| BOLT, 6X38 (Ref # 92001) | 92001-1899 | 2 |
| BOLT, FLANGED, 6X80 (Ref # 92002) | 92002-1568 | 1 |
| PIN, 6.2X8X14 (Ref # 92043) | 92043-1263 | 4 |
| BEARING-NEEDLE, HK1210FM (Ref # 92046) | 92046-0034 | 1 |
| SEAL-OIL, SCY 15X30X7 (Ref # 92049) | 92049-1158 | 1 |
| SEAL-OIL (Ref # 92049A) | 92049-1560 | 1 |
| RING-O, 31.5X2.6 (Ref # 92055) | 92055-049 | 1 |
| RING-O, 62.6X66X3.1 (Ref # 92055A) | 92055-1221 | 1 |
| PLUG, DRAIN (Ref # 92066) | 92066-1156 | 1 |
| BOLT, 6X20 (Ref # 92150) | 92150-1010 | 1 |
| BOLT, 6X30 (Ref # 92150A) | 92150-1021 | 23 |
| BOLT, FLANGED-SMALL, 6X25 (Ref # 92150B) | 92150-1779 | 8 |
| BOLT, FLANGED, 6X50 (Ref # 92154) | 92154-4222 | 1 |

2024 KLR® 650 PARTS LIST

Engine Cover(s)

| ITEM NAME | PART NUMBER | QUANTITY |
|----------------------------------|-------------|----------|
| DAMPER,15X35X15 (Ref # 92161) | 92161-2359 | 1 |
| CLAMP,12MM DIA. (Ref # 92173) | 92173-0736 | 1 |
| BOLT-SOCKET,6X10 (Ref # 120) | 120CA0610 | 1 |
| BOLT-SOCKET,6X25 (Ref # 120A) | 120CB0625 | 1 |
| SCREW-PAN-CROS,5X10 (Ref # 220) | 220AA0510 | 2 |
| SCREW-PAN-CROS,6X12 (Ref # 220A) | 220AA0612 | 1 |
| O RING,11MM (Ref # 670) | 670B2011 | 1 |
| O RING,18MM (Ref # 670A) | 670B2018 | 1 |
| O RING,40MM (Ref # 671) | 671B2540 | 1 |