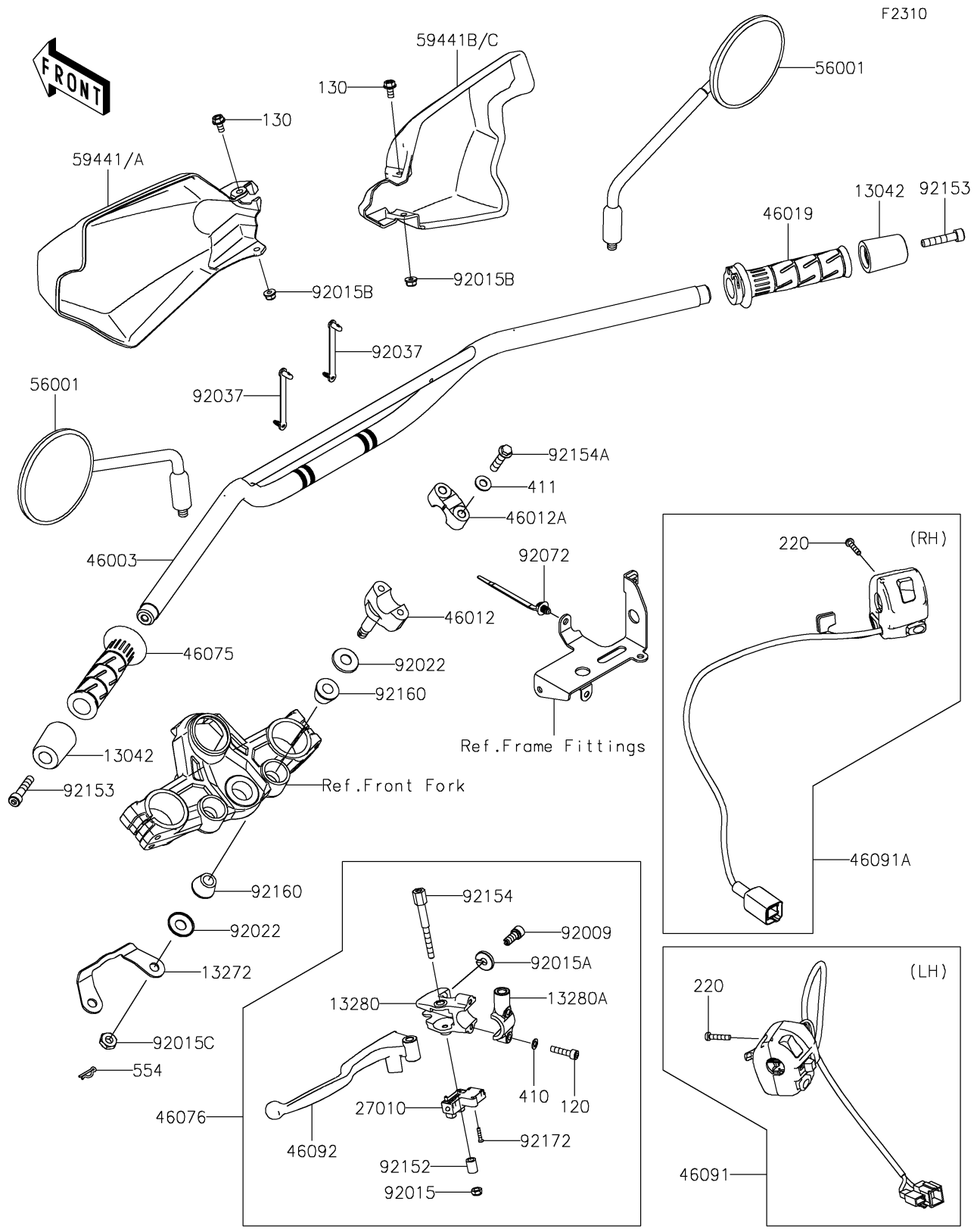


2025 KLR650 Adventure ABS PARTS DIAGRAM

Handlebar



2025 KLR650 Adventure ABS PARTS LIST

Handlebar

| ITEM NAME | PART NUMBER | QUANTITY |
|--|----------------|----------|
| WEIGHT,HANDLE (Ref # 13042) | 13042-5007 | 2 |
| PLATE,STABILIZER (Ref # 13272) | 13272-3799 | 1 |
| HOLDER,LEVER (Ref # 13280) | 13280-0929 | 1 |
| HOLDER,MIRROR (Ref # 13280A) | 13280-0930 | 1 |
| SWITCH,CLUTCH (Ref # 27010) | 27010-0729 | 1 |
| HANDLE (Ref # 46003) | 46003-0793 | 1 |
| HOLDER-HANDLE,LWR,F.S.BLACK (Ref # 46012) | 46012-0075-18R | 2 |
| HOLDER-HANDLE,UPP,F.S.BLACK (Ref # 46012A) | 46012-0380-18R | 2 |
| GRIP-ASSY,THROTTLE (Ref # 46019) | 46019-0060 | 1 |
| GRIP,HANDLE,LH (Ref # 46075) | 46075-0564 | 1 |
| LEVER-ASSY-GRIP (Ref # 46076) | 46076-0183 | 1 |
| HOUSING-ASSY-CONTROL,LH (Ref # 46091) | 46091-0552 | 1 |
| HOUSING-ASSY-CONTROL,RH (Ref # 46091A) | 46091-0553 | 1 |
| LEVER-GRIP,CLUTCH (Ref # 46092) | 46092-0583 | 1 |
| MIRROR-ASSY (Ref # 56001) | 56001-0444 | 2 |
| COVER-HANDLE,LH,EBONY (Ref # 59441A) | 59441-0304-6C | 1 |
| COVER-HANDLE,RH,EBONY (Ref # 59441C) | 59441-0307-6C | 1 |
| SCREW,CABLE ADJUST,8MM,BLACK (Ref # 92009) | 92009-1134 | 1 |
| NUT,LOCK,6MM,BLACK (Ref # 92015) | 92015-1191 | 1 |
| NUT,CABLE ADJUST LOCK,8MM,BLK (Ref # 92015A) | 92015-1197 | 1 |
| NUT,LOCK,FLANGED,6MM (Ref # 92015B) | 92015-1603 | 2 |
| NUT,LOCK,10MM (Ref # 92015C) | 92015-1962 | 2 |
| WASHER (Ref # 92022) | 92022-1737 | 4 |
| CLAMP,SPEED,L=58 (Ref # 92037) | 92037-1163 | 2 |
| BAND,OS170-FT7(BLACK) (Ref # 92072) | 92072-1414 | 1 |
| COLLAR,6.5X10.5X14 (Ref # 92152) | 92152-2848 | 1 |
| BOLT,SOCKET,8X40 (Ref # 92153) | 92153-1901 | 2 |
| BOLT (Ref # 92154) | 92154-2359 | 1 |
| BOLT,FLANGED,8X35 (Ref # 92154A) | 92154-3964 | 4 |

2025 KLR650 Adventure ABS PARTS LIST

Handlebar

| ITEM NAME | PART NUMBER | QUANTITY |
|-------------------------------------|-------------|----------|
| DAMPER,HANDLE HOLDER (Ref # 92160) | 92160-1544 | 4 |
| SCREW,3X16 (Ref # 92172) | 92172-0183 | 2 |
| BOLT-SOCKET,6X25 (Ref # 120) | 120CB0625 | 2 |
| BOLT-FLANGED,6X12 (Ref # 130) | 130BB0612 | 2 |
| SCREW-PAN-CROS,5X25 (Ref # 220) | 220AB0525 | 4 |
| WASHER-PLAIN-SMALL,6MM (Ref # 410) | 410AB0600 | 2 |
| WASHER-PLAIN,8.5X18X1.6 (Ref # 411) | 411AB0800 | 4 |
| PIN-SNAP (Ref # 554) | 554DA0800 | 2 |