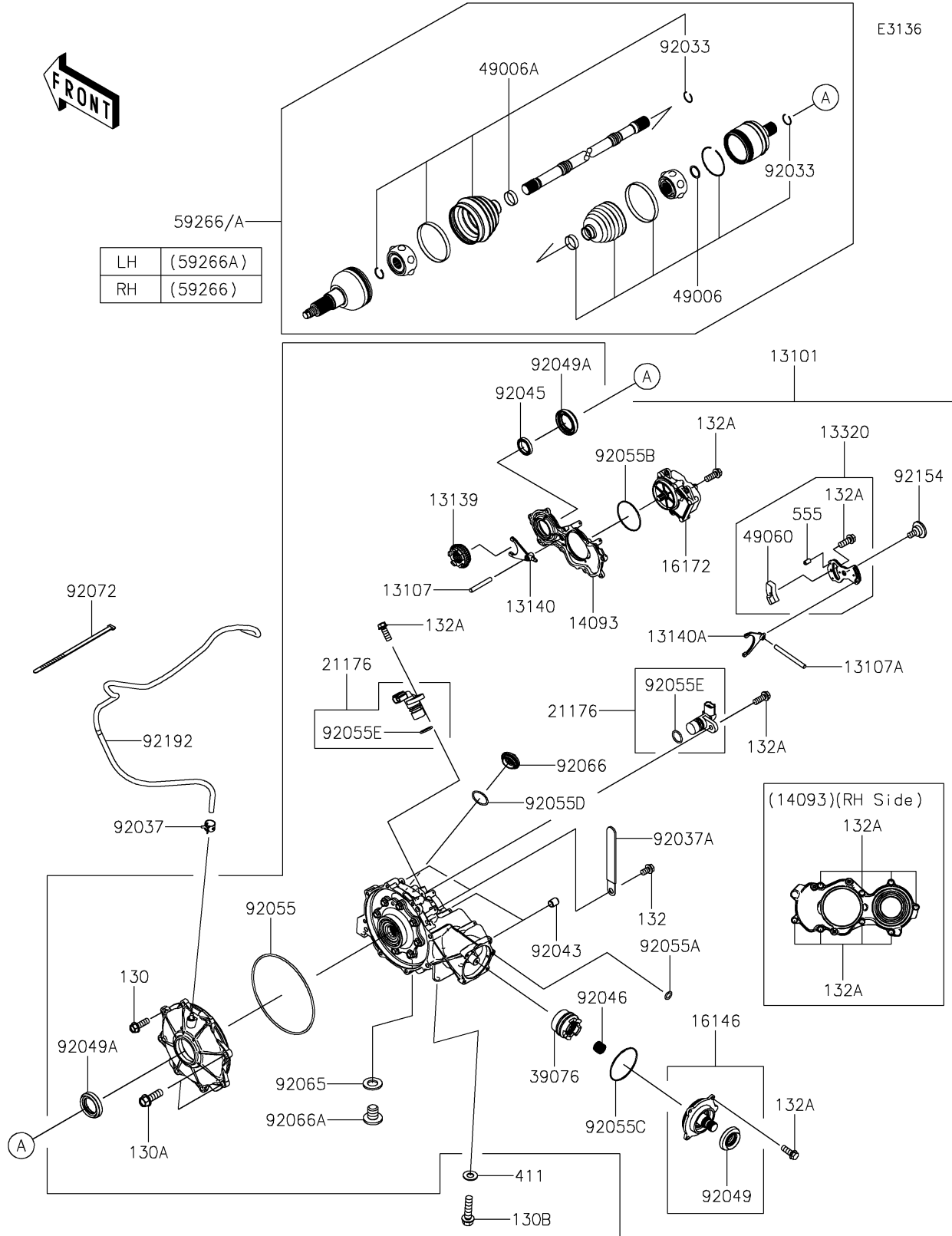


2024 Teryx KRX® 4 1000 eS Special Edition PARTS DIAGRAM

Drive Shaft-Front



2024 Teryx KRX® 4 1000 eS Special Edition PARTS LIST

Drive Shaft-Front

| ITEM NAME | PART NUMBER | QUANTITY |
|--|-------------|----------|
| GEAR-ASSY,FRONT DIFFERENTIAL (Ref # 13101) | 13101-0730 | 1 |
| SHAFT,DIFF LOCK (Ref # 13107) | 13107-0768 | 1 |
| SHAFT (Ref # 13107A) | 13107-0887 | 1 |
| SHIFTER,DIFF (Ref # 13139) | 13139-0035 | 1 |
| FORK-SHIFT (Ref # 13140) | 13140-0674 | 1 |
| FORK-SHIFT (Ref # 13140A) | 13140-0675 | 1 |
| LEVER-ASSY (Ref # 13320) | 13320-0033 | 1 |
| COVER,RH (Ref # 14093) | 14093-0707 | 1 |
| COVER-ASSY,INPUT SHAFT (Ref # 16146) | 16146-0740 | 1 |
| ACTUATOR (Ref # 16172) | 16172-0030 | 1 |
| SENSOR,SPEED (Ref # 21176) | 21176-0891 | 2 |
| LIMITER (Ref # 39076) | 39076-0047 | 1 |
| BOOT,INSIDE (Ref # 49006) | 49006-0615 | 2 |
| BOOT,OUTSIDE (Ref # 49006A) | 49006-0616 | 2 |
| CAM (Ref # 49060) | 49060-0025 | 1 |
| JOINT-BALL,RH (Ref # 59266) | 59266-0761 | 1 |
| JOINT-BALL,LH (Ref # 59266A) | 59266-0762 | 1 |
| RING-SNAP (Ref # 92033) | 92033-0837 | 4 |
| CLAMP,TUBE (Ref # 92037) | 92037-1505 | 1 |
| CLAMP (Ref # 92037A) | 92037-1993 | 2 |
| PIN,DOWEL,8X10 (Ref # 92043) | 92043-1302 | 2 |
| BEARING-BALL,6806 (Ref # 92045) | 92045-0826 | 1 |
| BEARING-NEEDLE (Ref # 92046) | 92046-1234 | 1 |
| SEAL-OIL (Ref # 92049) | 92049-0160 | 1 |
| SEAL-OIL,TC9Y 40X62X10X17.2 (Ref # 92049A) | 92049-0815 | 2 |
| RING-O,190.2X4.2 (Ref # 92055) | 92055-0121 | 1 |
| RING-O,7.5X1.5 (Ref # 92055A) | 92055-0756 | 1 |
| RING-O,1.9X71.8 (Ref # 92055B) | 92055-0781 | 1 |
| RING-O (Ref # 92055C) | 92055-081 | 1 |

2024 Teryx KRX® 4 1000 eS Special Edition PARTS LIST

Drive Shaft-Front

| ITEM NAME | PART NUMBER | QUANTITY |
|--------------------------------------|-------------|----------|
| RING-O,35.8MM (Ref # 92055D) | 92055-1281 | 1 |
| RING-O (Ref # 92055E) | 92055-1639 | 2 |
| GASKET,12X22X2 (Ref # 92065) | 92065-097 | 1 |
| PLUG,36X7.5 (Ref # 92066) | 92066-0744 | 1 |
| PLUG,12X15 (Ref # 92066A) | 92066-0943 | 1 |
| BAND,L=218 (Ref # 92072) | 92072-032 | 1 |
| BOLT (Ref # 92154) | 92154-3860 | 1 |
| TUBE,5.8X10.8X1275 (Ref # 92192) | 92192-1922 | 1 |
| BOLT-FLANGED,8X25 (Ref # 130) | 130CA0825 | 6 |
| BOLT-FLANGED,10X30 (Ref # 130A) | 130CA1030 | 2 |
| BOLT-FLANGED,10X40 (Ref # 130B) | 130CA1040 | 4 |
| BOLT-FLANGED-SMALL,6X10 (Ref # 132) | 132BA0610 | 2 |
| BOLT-FLANGED-SMALL,6X16 (Ref # 132A) | 132BA0616 | 18 |
| WASHER-PLAIN,10MM (Ref # 411) | 411AA1000 | 4 |
| PIN-SPRING,4X8 (Ref # 555) | 555A0408 | 2 |