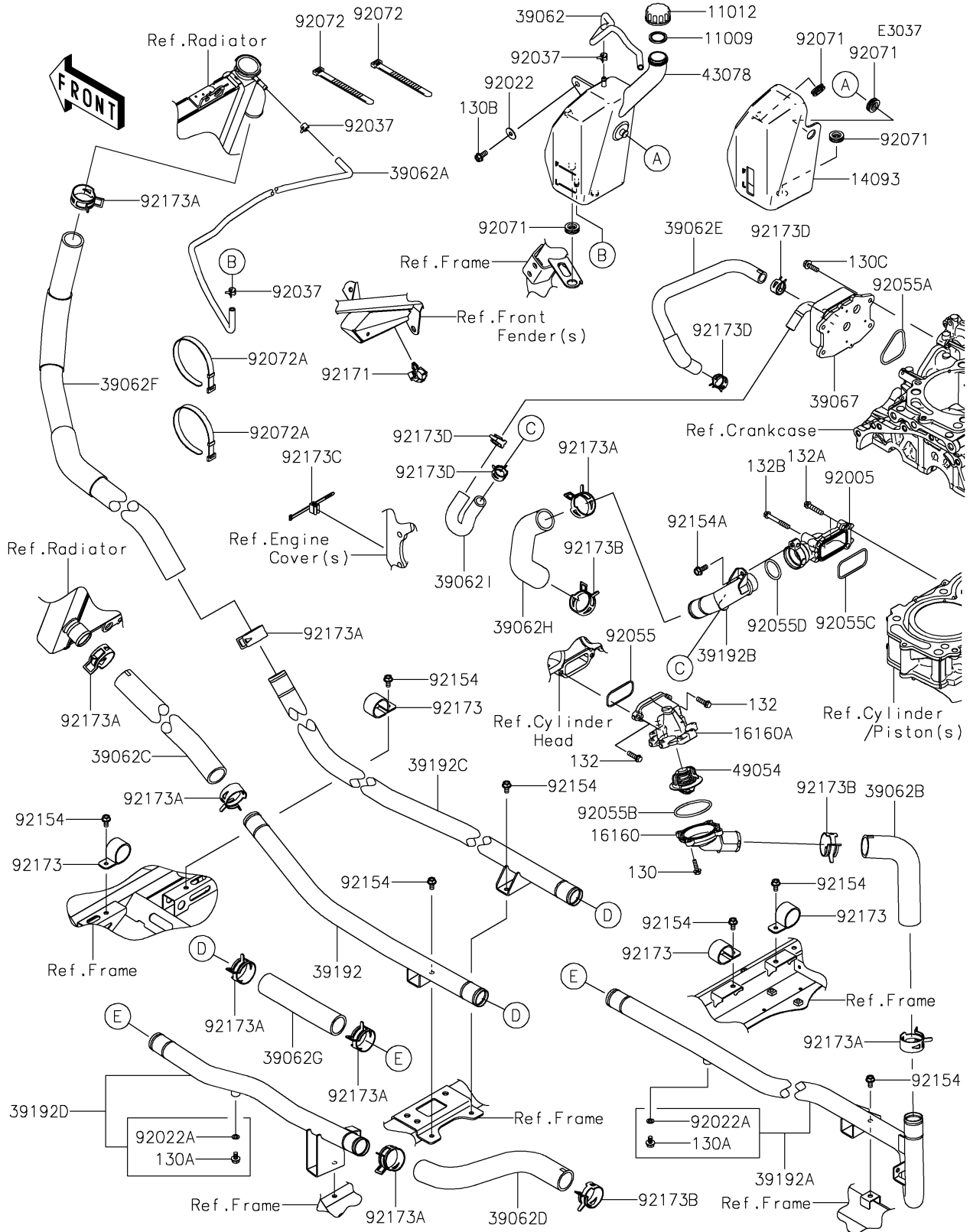


2024 Teryx KRX® 4 1000 eS Special Edition PARTS DIAGRAM

Water Pipe



2024 Teryx KRX® 4 1000 eS Special Edition PARTS LIST

Water Pipe

ITEM NAME	PART NUMBER	QUANTITY
GASKET,RESERVOIR TANK CAP (Ref # 11009)	11009-1145	1
CAP (Ref # 11012)	11012-1084	1
COVER,RESERVOIR (Ref # 14093)	14093-0847	1
BODY (Ref # 16160)	16160-0805	1
BODY (Ref # 16160A)	16160-0806	1
HOSE-COOLING,OVERFLOW (Ref # 39062)	39062-0830	1
HOSE-COOLING,RAD-RESERVOIR (Ref # 39062A)	39062-0831	1
HOSE-COOLING,ENGINE-PIPE(RH) (Ref # 39062B)	39062-0833	1
HOSE-COOLING,RADIATOR-PIPE(LH) (Ref # 39062C)	39062-0835	1
HOSE-COOLING,PIPE(LH)-W/PUMP (Ref # 39062D)	39062-0836	1
HOSE-COOLING,OIL COOLER-W/PUMP (Ref # 39062E)	39062-0838	1
HOSE-COOLING,RADIATOR-PIPE(RH) (Ref # 39062F)	39062-0870	1
HOSE-COOLING,PIPE-WATER JOINT (Ref # 39062G)	39062-0935	2
HOSE-COOLING,W/PUMP-ENGINE (Ref # 39062H)	39062-0936	1
HOSE-COOLING,ENGINE-OIL COOLER (Ref # 39062I)	39062-0937	1
COOLER-OIL (Ref # 39067)	39067-0027	1
PIPE-WATER,FR(LH) (Ref # 39192)	39192-0684	1
PIPE-WATER,RR(RH) (Ref # 39192A)	39192-0686	1
PIPE-WATER (Ref # 39192B)	39192-0688	1
PIPE-WATER,FR(RH) (Ref # 39192C)	39192-0699	1
PIPE-WATER,RR(LH) (Ref # 39192D)	39192-0701	1
RESERVOIR (Ref # 43078)	43078-0602	1
THERMOSTAT (Ref # 49054)	49054-0004	1
FITTING (Ref # 92005)	92005-1432	1
WASHER,PLAIN,6.5X20X1 (Ref # 92022)	92022-165	1
WASHER,6.2X11X1 (Ref # 92022A)	92022-304	2
CLAMP,TUBE (Ref # 92037)	92037-1461	3
RING-O,YP 27.6 57.6 1.9 (Ref # 92055)	92055-0021	1
RING-O,46.4X3.1 (Ref # 92055A)	92055-0752	1

2024 Teryx KRX® 4 1000 eS Special Edition PARTS LIST

Water Pipe

ITEM NAME	PART NUMBER	QUANTITY
RING-O,53.5X2.6 (Ref # 92055B)	92055-0831	1
RING-O,FITTING (Ref # 92055C)	92055-0923	1
RING-O (Ref # 92055D)	92055-1726	1
GROMMET (Ref # 92071)	92071-1115	4
BAND,L=123 (Ref # 92072)	92072-030	2
BAND,L=186 (Ref # 92072A)	92072-056	2
BOLT,FLANGED,6X12 (Ref # 92154)	92154-1195	8
BOLT,FLANGED-SMALL,6X16 (Ref # 92154A)	92154-1893	1
CLAMP,BRAKE HOSE (Ref # 92171)	92171-0316	1
CLAMP (Ref # 92173)	92173-1204	4
CLAMP,28.6MM (Ref # 92173A)	92173-1205	11
CLAMP,33.4MM (Ref # 92173B)	92173-1981	3
CLAMP (Ref # 92173C)	92173-2089	1
CLAMP (Ref # 92173D)	92173-2285	4
BOLT-FLANGED,5X18 (Ref # 130)	130BA0518	4
BOLT-FLANGED,6X10 (Ref # 130A)	130BA0610	2
BOLT-FLANGED,6X14 (Ref # 130B)	130BA0614	1
BOLT-FLANGED,6X20 (Ref # 130C)	130CA0620	4
BOLT-FLANGED-SMALL,6X20 (Ref # 132)	132BA0620	2
BOLT-FLANGED-SMALL,6X30 (Ref # 132A)	132BA0630	2
BOLT-FLANGED-SMALL,6X45 (Ref # 132B)	132BA0645	1