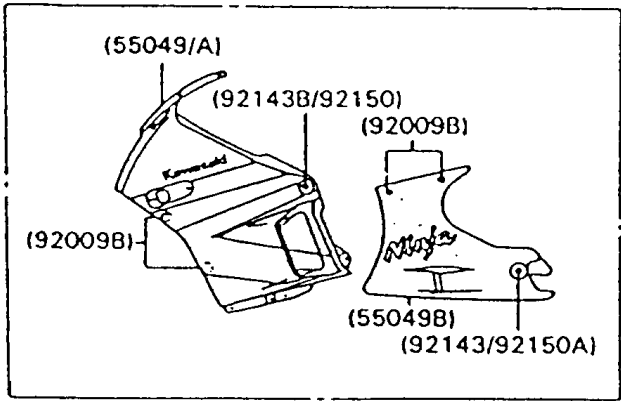
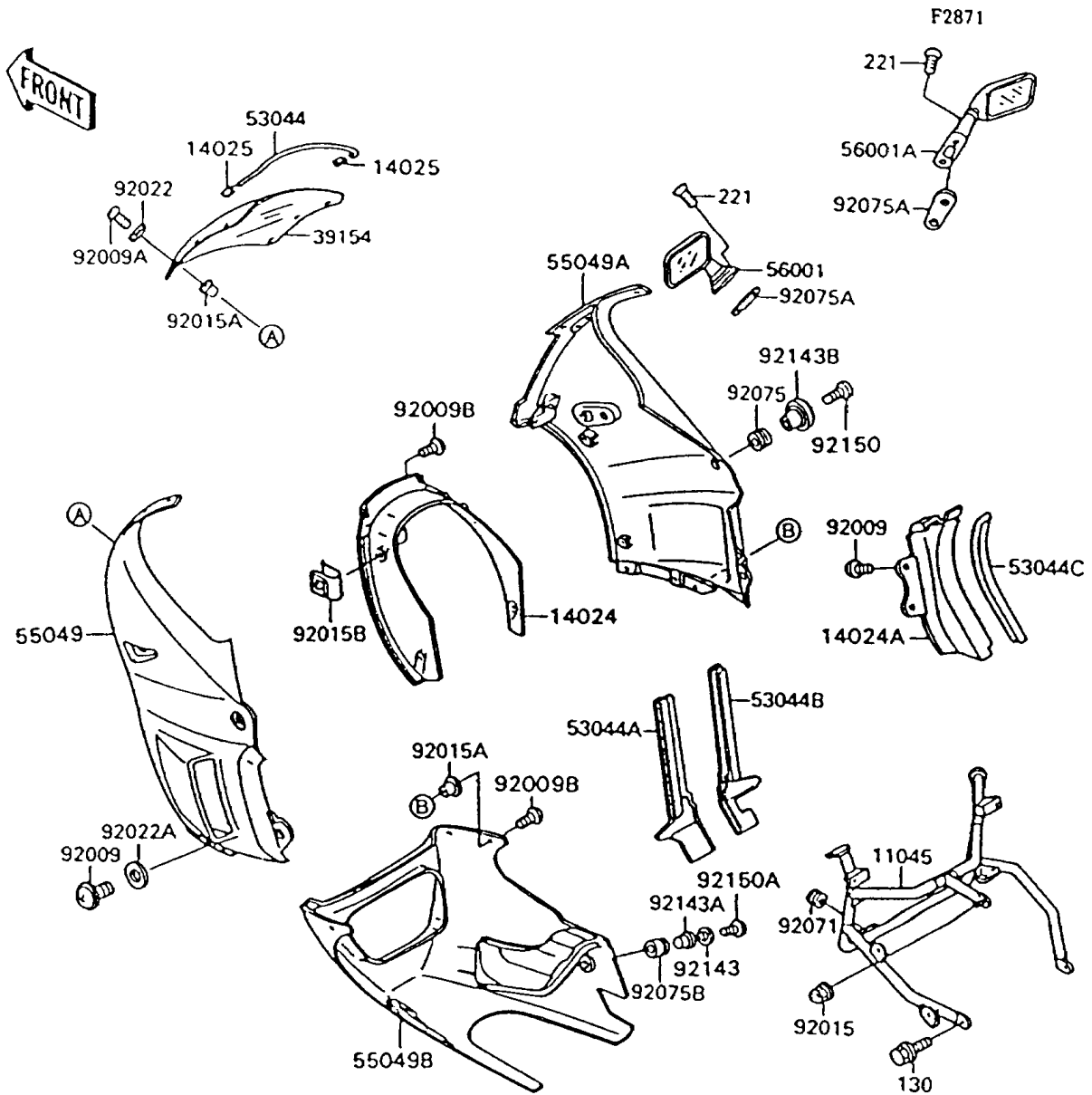


1996 Ninja® 600R PARTS DIAGRAM

Cowling



1996 Ninja® 600R PARTS LIST

Cowling

| ITEM NAME | PART NUMBER | QUANTITY |
|---|---------------|----------|
| BRACKET,COWLING (Ref # 11045) | 11045-1538 | 1 |
| COVER,HEAD LAMP,EBONY (Ref # 14024) | 14024-1408-H8 | 1 |
| COVER,COWLING,INNER,RH (Ref # 14024A) | 14024-1538 | 1 |
| COVER,TRIM END (Ref # 14025) | 14025-1756 | 2 |
| WINDSHIELD (Ref # 39154) | 39154-1107 | 1 |
| TRIM,WINDSHIELD (Ref # 53044) | 53044-1130 | 1 |
| TRIM,COWLING,LH (Ref # 53044A) | 53044-1193 | 1 |
| TRIM,COWLING,RH (Ref # 53044B) | 53044-1194 | 1 |
| TRIM (Ref # 53044C) | 53044-1198 | 1 |
| COWLING.,UPP,LH,EBONY (Ref # 55049) | 55049-5165-H8 | 1 |
| COWLING.,UPP,RH,EBONY (Ref # 55049A) | 55049-5166-H8 | 1 |
| COWLING.,LWR,EBONY/GRAY (Ref # 55049B) | 55049-5167-VL | 1 |
| MIRROR-ASSY,LH (Ref # 56001) | 56001-1319 | 1 |
| MIRROR-ASSY,RH (Ref # 56001A) | 56001-1320 | 1 |
| SCREW,6X14 (Ref # 92009) | 92009-1288 | 4 |
| SCREW,5X16 (Ref # 92009A) | 92009-1654 | 6 |
| SCREW,5X20 (Ref # 92009B) | 92009-1656 | 8 |
| NUT,CAP,8MM,BLACK (Ref # 92015) | 92015-1174 | 1 |
| NUT,WELL,5MM (Ref # 92015A) | 92015-1640 | 10 |
| NUT,5MM (Ref # 92015B) | 92015-1710 | 4 |
| WASHER,NYLON,5.3X11.5X1.5 (Ref # 92022) | 92022-1521 | 6 |
| WASHER,6.5X16X1.0 (Ref # 92022A) | 92022-1654 | 2 |
| GROMMET (Ref # 92071) | 92071-056 | 2 |
| DAMPER (Ref # 92075) | 92075-1634 | 2 |
| DAMPER,MIRROR (Ref # 92075A) | 92075-1929 | 2 |
| DAMPER (Ref # 92075B) | 92075-1936 | 2 |
| COLLAR,L=6.5,BLACK (Ref # 92143) | 92143-1086 | 2 |
| COLLAR,L=19.6 (Ref # 92143A) | 92143-1100 | 2 |
| COLLAR,BLACK (Ref # 92143B) | 92143-1226 | 2 |

1996 Ninja® 600R PARTS LIST

Cowling

| ITEM NAME | PART NUMBER | QUANTITY |
|-------------------------------------|-------------|----------|
| BOLT,SOCKET,6X18 (Ref # 92150) | 92150-1553 | 2 |
| BOLT,SOCKET,6X30 (Ref # 92150A) | 92150-1554 | 2 |
| BOLT-FLANGED,8X12,BLACK (Ref # 130) | 130C0812 | 2 |
| SCREW-CSK-CROS,6X30 (Ref # 221) | 221C0630 | 4 |