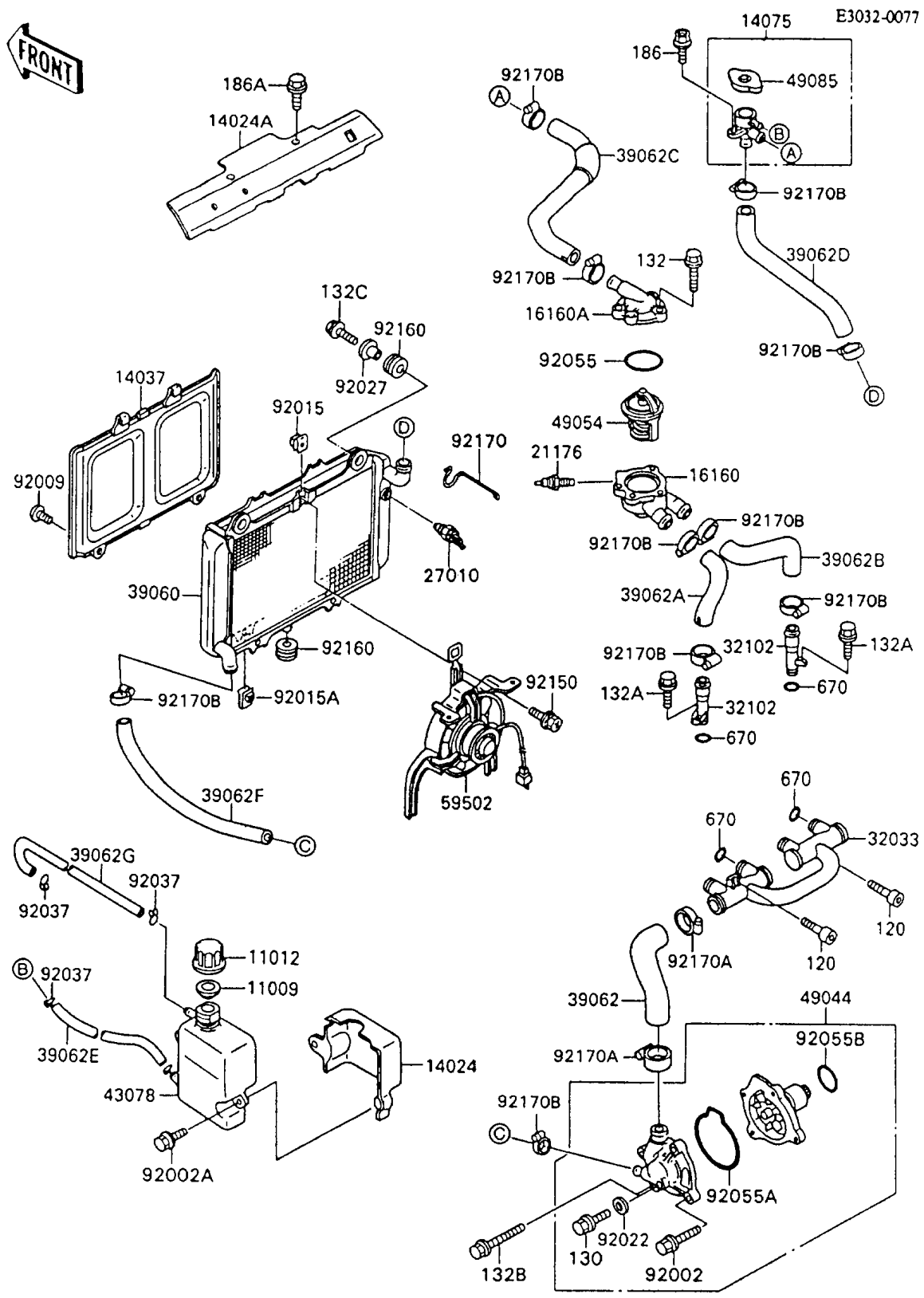


# 1993 Ninja® 600R PARTS DIAGRAM

Radiator



# 1993 Ninja® 600R PARTS LIST

## Radiator

ITEM NAME	PART NUMBER	QUANTITY
GASKET,RESERVOIR TANK CAP (Ref # 11009)	11009-1145	1
CAP (Ref # 11012)	11012-1084	1
COVER,RESERVOIR (Ref # 14024)	14024-1426	1
COVER (Ref # 14024A)	14024-1441	1
SCREEN (Ref # 14037)	14037-1091	1
CAP-ASSY,RADIATOR (Ref # 14075)	14075-1061	1
BODY,THERMOSTAT,LWR (Ref # 16160)	16160-1112	1
BODY,THERMOSTAT,UPP (Ref # 16160A)	16160-1129	1
SENSOR,WATER (Ref # 21176)	21176-1054	1
SWITCH,THERMOSTAT (Ref # 27010)	27010-1304	1
PIPE (Ref # 32033)	32033-1593	1
PIPE (Ref # 32102)	32102-1043	2
RADIATOR (Ref # 39060)	39060-1085	1
HOSE-COOLING,PUMP-CYLINDER (Ref # 39062)	39062-1111	1
HOSE-COOLING,HEAD-THERMOS,LH (Ref # 39062A)	39062-1235	1
HOSE-COOLING,HEAD-THERMOS,RH (Ref # 39062B)	39062-1236	1
HOSE-COOLING,CAP-THERMOSTAT (Ref # 39062C)	39062-1237	1
HOSE-COOLING,CAP-RADIATOR (Ref # 39062D)	39062-1238	1
HOSE-COOLING,RESERVOIR-CAP (Ref # 39062E)	39062-1240	1
HOSE-COOLING,RADIATOR-PUMP (Ref # 39062F)	39062-1256	1
HOSE-COOLING,RESERVOIR (Ref # 39062G)	39062-1269	1
RESERVOIR (Ref # 43078)	43078-1086	1
PUMP-WATER (Ref # 49044)	49044-1054	1
THERMOSTAT (Ref # 49054)	49054-1059	1
CAP-ASSY-PRESSURE (Ref # 49085)	49085-1066	1
FAN-ASSY (Ref # 59502)	59502-1081	1
BOLT,6X22 (Ref # 92002)	92002-1392	3
BOLT,6X16 (Ref # 92002A)	92002-1720	2
SCREW,TAPPING,6X16 (Ref # 92009)	92009-1436	2

# 1993 Ninja® 600R PARTS LIST

## Radiator

ITEM NAME	PART NUMBER	QUANTITY
NUT (Ref # 92015)	92015-1487	3
NUT,6MM (Ref # 92015A)	92015-1758	2
WASHER,6MM (Ref # 92022)	92022-1976	1
COLLAR,L=14 (Ref # 92027)	92027-1134	2
CLAMP,TUBE (Ref # 92037)	92037-147	3
RING-O,44.7X2.4 (Ref # 92055)	92055-1279	1
RING-O,WATER PUMP (Ref # 92055A)	92055-1315	1
RING-O,33.2X2.4 (Ref # 92055B)	92055-1424	1
BOLT,6X16 (Ref # 92150)	92150-1187	3
DAMPER (Ref # 92160)	92160-1007	3
CLAMP (Ref # 92170)	92170-1074	1
CLAMP,COOLING HOSE (Ref # 92170A)	92170-1284	2
CLAMP,COOLING HOSE (Ref # 92170B)	92170-1285	10
BOLT-SOCKET (Ref # 120)	120S0612	2
BOLT-FLANGED,6X10,BLACK (Ref # 130)	130C0610	1
BOLT-FLANGED-SMALL (Ref # 132)	132G0620	4
BOLT-FLANGED-SMALL (Ref # 132A)	132J0612	2
BOLT-FLANGED-SMALL (Ref # 132B)	132J0645	1
BOLT-FLANGED-SMALL (Ref # 132C)	132J0825	2
BOLT-UPSET-WP (Ref # 186)	186C0614	2
BOLT-UPSET-WP (Ref # 186A)	186C0616	2
O RING,16MM (Ref # 670)	670B2016	6