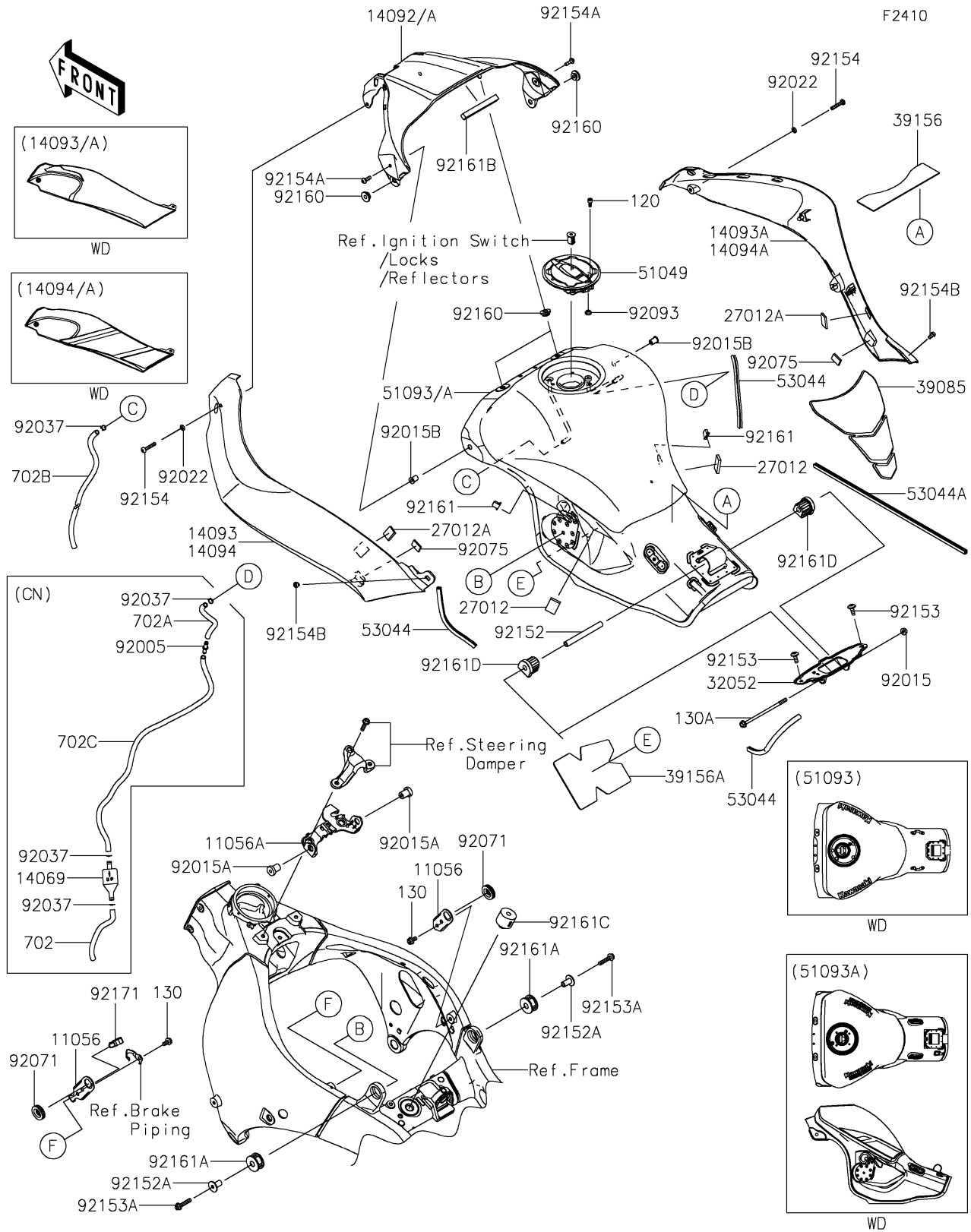


2025 Ninja ZX-10R ABS PARTS DIAGRAM

Fuel Tank



2025 Ninja ZX-10R ABS PARTS LIST

Fuel Tank

| ITEM NAME | PART NUMBER | QUANTITY |
|--|----------------|----------|
| BRACKET,TANK COVER,SIDE (Ref # 11056) | 11056-0242 | 2 |
| BRACKET,TANK COVER,FR (Ref # 11056A) | 11056-7782 | 1 |
| BREATHER,TANK (Ref # 14069) | 14069-0008 | 1 |
| COVER,TANK,CNT,M.F.S.BLACK (Ref # 14092) | 14092-0786-739 | 1 |
| COVER,TANK,CNT,L.GREEN (Ref # 14092A) | 14092-0786-777 | 1 |
| COVER,TANK,LH,M.F.S.BLACK (Ref # 14093) | 14093-5488-739 | 1 |
| COVER,TANK,RH,M.F.S.BLACK (Ref # 14093A) | 14093-5489-739 | 1 |
| COVER,TANK,LH,EBONY (Ref # 14094) | 14094-5027-H8 | 1 |
| COVER,TANK,RH,EBONY (Ref # 14094A) | 14094-5028-H8 | 1 |
| HOOK (Ref # 27012) | 27012-0170 | 2 |
| HOOK (Ref # 27012A) | 27012-0171 | 2 |
| BRACKET-TANK (Ref # 32052) | 32052-0154 | 1 |
| PAD-TANK (Ref # 39085) | 39085-0011 | 1 |
| PAD,40X180X1.0 (Ref # 39156) | 39156-0745 | 1 |
| PAD,106X141X2 (Ref # 39156A) | 39156-2403 | 1 |
| CAP-TANK,FUEL (Ref # 51049) | 51049-0756 | 1 |
| TANK-COMP-FUEL,M.F.S.BLACK (Ref # 51093) | 51093-5177-739 | 1 |
| TANK-COMP-FUEL,L.GREEN (Ref # 51093A) | 51093-5476-777 | 1 |
| TRIM,L=157 (Ref # 53044) | 53044-1276 | 3 |
| TRIM,L=400 (Ref # 53044A) | 53044-1310 | 1 |
| FITTING (Ref # 92005) | 92005-0721 | 1 |
| NUT,FLANGED,6MM (Ref # 92015) | 92015-1367 | 1 |
| NUT,RUBBER,6MM (Ref # 92015A) | 92015-1692 | 2 |
| NUT,WELL,5MM (Ref # 92015B) | 92015-1757 | 2 |
| WASHER,6.2X11X1.5 (Ref # 92022) | 92022-183 | 2 |
| CLAMP,TUBE (Ref # 92037) | 92037-010 | 1 |
| GROMMET (Ref # 92071) | 92071-1043 | 2 |
| DAMPER (Ref # 92075) | 92075-1982 | 2 |
| SEAL,FUEL TANK CAP (Ref # 92093) | 92093-1030 | 1 |

2025 Ninja ZX-10R ABS PARTS LIST

Fuel Tank

| ITEM NAME | PART NUMBER | QUANTITY |
|------------------------------------|-------------|----------|
| COLLAR,6.8X10X60 (Ref # 92152) | 92152-1182 | 1 |
| COLLAR,6.8X10X20.1 (Ref # 92152A) | 92152-2200 | 2 |
| BOLT,SOCKET,6X16 (Ref # 92153) | 92153-1526 | 2 |
| BOLT,FLANGED,6X28 (Ref # 92153A) | 92153-1580 | 2 |
| BOLT,SOCKET,6X30 (Ref # 92154) | 92154-0206 | 2 |
| BOLT,SOCKET,5X16 (Ref # 92154A) | 92154-0209 | 2 |
| BOLT,SOCKET,5X10 (Ref # 92154B) | 92154-0211 | 2 |
| DAMPER (Ref # 92160) | 92160-1613 | 4 |
| DAMPER (Ref # 92161) | 92161-0365 | 2 |
| DAMPER,10X30X16 (Ref # 92161A) | 92161-0869 | 2 |
| DAMPER,10X90X10 (Ref # 92161B) | 92161-0963 | 1 |
| DAMPER (Ref # 92161C) | 92161-1116 | 1 |
| DAMPER,FUEL TANK,RR (Ref # 92161D) | 92161-1330 | 2 |
| CLAMP (Ref # 92171) | 92171-0782 | 1 |
| BOLT-SOCKET,5X12 (Ref # 120) | 120CA0512 | 4 |
| BOLT-FLANGED,6X12 (Ref # 130) | 130BA0612 | 2 |
| BOLT-FLANGED,6X75 (Ref # 130A) | 130BA0675 | 1 |
| TUBE-RUBBER,6X9X120 (Ref # 702) | 702A06120 | 1 |
| TUBE-RUBBER,6X9X145 (Ref # 702A) | 702A06145 | 1 |
| TUBE-RUBBER,6X9X660 (Ref # 702B) | 702A06660 | 1 |
| TUBE-RUBBER,6X9X700 (Ref # 702C) | 702A06700 | 1 |
| CLAMP,TUBE (Ref # 92037) | 92037-010 | 4 |