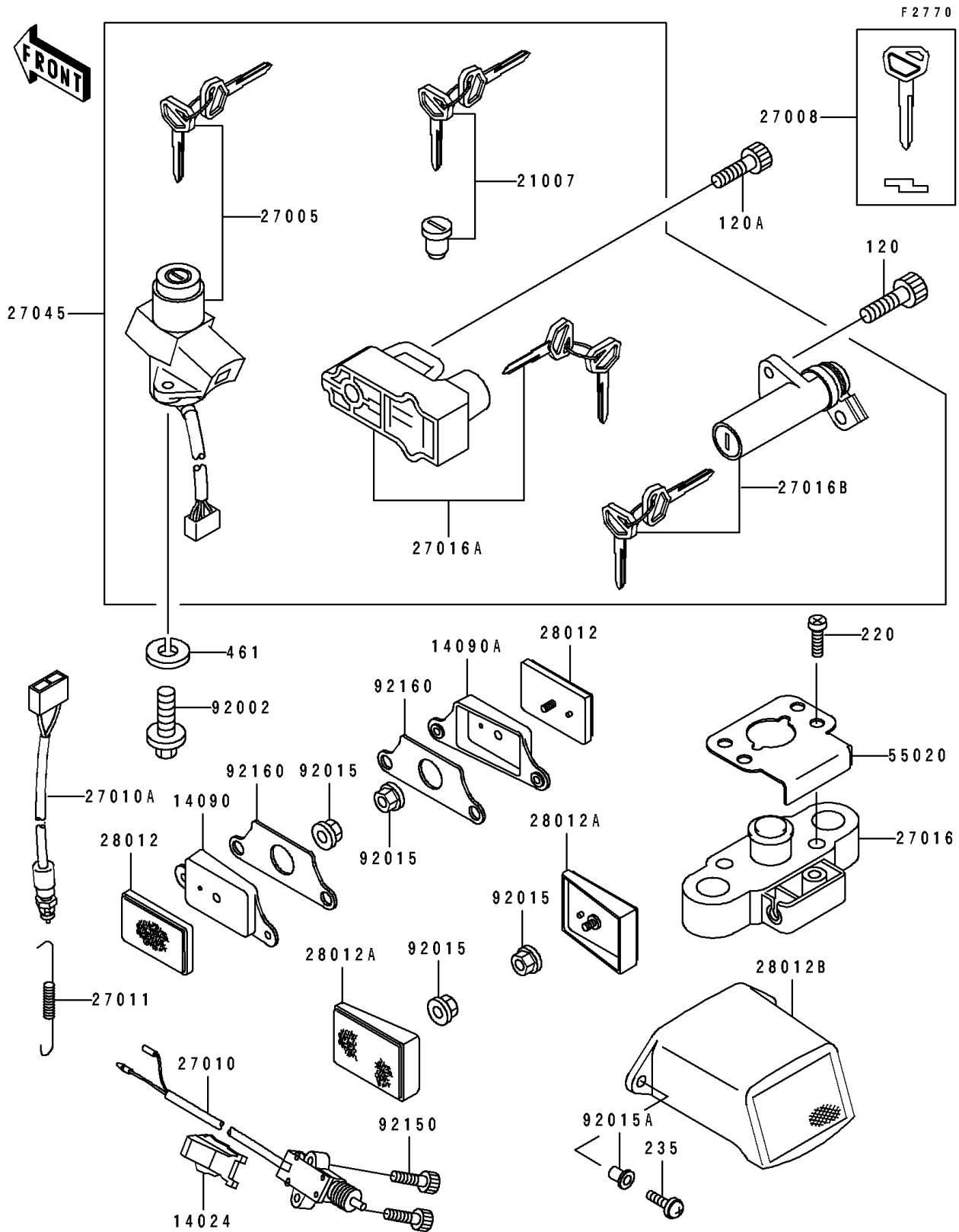


1996 GPZ 1100 ABS PARTS DIAGRAM

Ignition Switch/Locks/Reflectors



1996 GPZ 1100 ABS PARTS LIST

Ignition Switch/Locks/Reflectors

| ITEM NAME | PART NUMBER | QUANTITY |
|--|-------------|----------|
| COVER,SIDE STAND SWITCH (Ref # 14024) | 14024-1532 | 1 |
| COVER,REFLECTOR,FR,LH (Ref # 14090) | 14090-1562 | 1 |
| COVER,REFLECTOR,FR,RH (Ref # 14090A) | 14090-1563 | 1 |
| ROTOR,LOCK,TANK CAP (Ref # 21007) | 21007-5037 | 1 |
| SWITCH-ASSY-IGNITION (Ref # 27005) | 27005-5101 | 1 |
| KEY-LOCK,BLANK (Ref # 27008) | 27008-1173 | 1 |
| SWITCH,SIDE STAND (Ref # 27010) | 27010-1226 | 1 |
| SWITCH,BRAKE LAMP (Ref # 27010A) | 27010-1357 | 1 |
| SPRING,BRAKE LAMP SWITCH (Ref # 27011) | 27011-011 | 1 |
| LOCK-ASSY,SEAT STRIKER (Ref # 27016) | 27016-1098 | 1 |
| LOCK-ASSY,HELMET (Ref # 27016A) | 27016-5203 | 1 |
| LOCK-ASSY,SEAT (Ref # 27016B) | 27016-5205 | 1 |
| SWITCH-ASSY (Ref # 27045) | 27045-5012 | 1 |
| REFLECTOR-REFLEX (Ref # 28012) | 28012-1003 | 2 |
| REFLECTOR-REFLEX,RR (Ref # 28012A) | 28012-1056 | 2 |
| REFLECTOR-REFLEX,RR (Ref # 28012B) | 28012-1066 | 1 |
| GUARD,SEAT STRIKER (Ref # 55020) | 55020-1498 | 1 |
| BOLT,TORX,6X16 (Ref # 92002) | 92002-1333 | 2 |
| NUT,FLANGED,5MM (Ref # 92015) | 92015-1259 | 4 |
| NUT (Ref # 92015A) | 92015-1700 | 2 |
| BOLT,SOCKET,5X22 (Ref # 92150) | 92150-1491 | 2 |
| DAMPER,REFLECTOR (Ref # 92160) | 92160-1586 | 2 |
| BOLT-SOCKET (Ref # 120) | 120S0512 | 2 |
| BOLT-SOCKET,6X16,BLACK (Ref # 120A) | 120S0616 | 1 |
| SCREW-PAN-CROS,6X30,BLACK (Ref # 220) | 220C0630 | 2 |
| SCREW-PAN-WP-CROS (Ref # 235) | 235C0620 | 2 |
| WASHER-SPRING (Ref # 461) | 461L0600 | 2 |