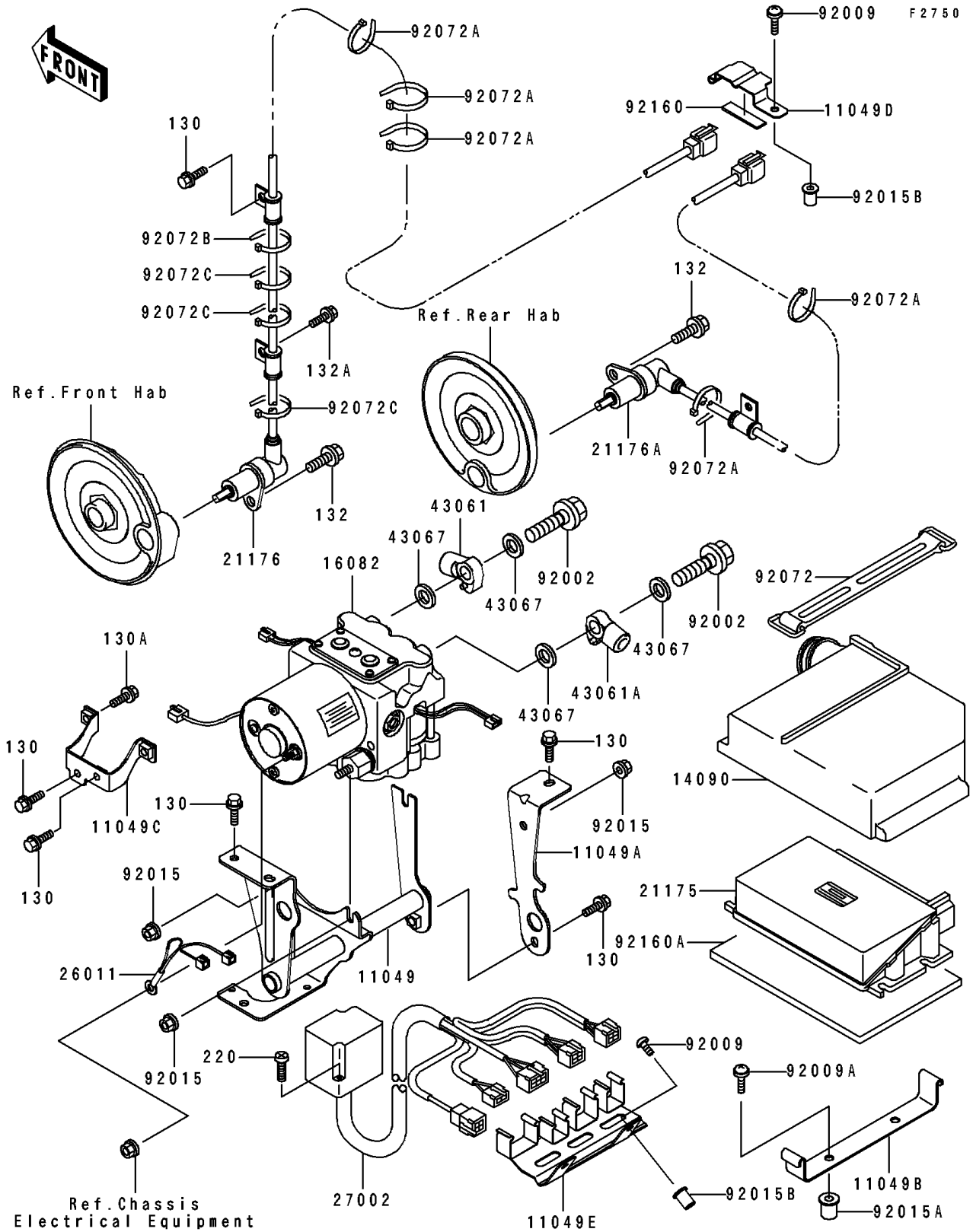


1996 GPZ 1100 ABS PARTS DIAGRAM

Other



1996 GPZ 1100 ABS PARTS LIST

Other

ITEM NAME	PART NUMBER	QUANTITY
BRACKET,OIL PUMP,LH (Ref # 11049)	11049-1289	1
BRACKET,OIL PUMP,RH (Ref # 11049A)	11049-1290	1
BRACKET,E.CONTROL UNIT (Ref # 11049B)	11049-1291	1
BRACKET,FUSE (Ref # 11049C)	11049-1321	1
BRACKET,SENSOR (Ref # 11049D)	11049-1441	1
BRACKET,CONNECTOR (Ref # 11049E)	11049-1442	1
COVER,E.CONTROL UNIT (Ref # 14090)	14090-1627	1
PUMP-ASSY-OIL (Ref # 16082)	16082-1141	1
CONTROL UNIT-ELECTRONIC (Ref # 21175)	21175-1060	1
SENSOR,FR (Ref # 21176)	21176-1071	1
SENSOR,RR (Ref # 21176A)	21176-1072	1
WIRE-LEAD,(-) (Ref # 26011)	26011-1645	1
RELAY-ASSY (Ref # 27002)	27002-1094	1
JOINT-BRAKE,OIL PUMP (Ref # 43061)	43061-1074	1
JOINT-BRAKE,OIL PUMP (Ref # 43061A)	43061-1075	1
WASHER,10.5X15X1.5 (Ref # 43067)	43067-001	4
BOLT,OIL,L=23 (Ref # 92002)	92002-1888	2
SCREW,5X14,WHITE (Ref # 92009)	92009-1366	3
SCREW,6X16 (Ref # 92009A)	92009-1621	2
NUT,FLANGED,6MM (Ref # 92015)	92015-1367	3
NUT (Ref # 92015A)	92015-1700	2
NUT,WELL,5MM (Ref # 92015B)	92015-1757	3
BAND,L=146.9 (Ref # 92072)	92072-054	1
BAND,L=185 (Ref # 92072A)	92072-1195	5
BAND,L=365 (Ref # 92072B)	92072-1197	1
BAND,L=100 (Ref # 92072C)	92072-1250	3
DAMPER (Ref # 92160)	92160-1099	1
DAMPER,E.CONTROL UNIT (Ref # 92160A)	92160-1647	1
BOLT-FLANGED (Ref # 130)	130J0610	7

1996 GPZ 1100 ABS PARTS LIST

Other

ITEM NAME	PART NUMBER	QUANTITY
BOLT-FLANGED,6X14,BLACK (Ref # 130A)	130J0614	2
BOLT-FLANGED-SMALL,8X16 (Ref # 132)	132E0816	2
BOLT-FLANGED-SMALL (Ref # 132A)	132J0612	1
SCREW-PAN-CROS (Ref # 220)	220C0430	2