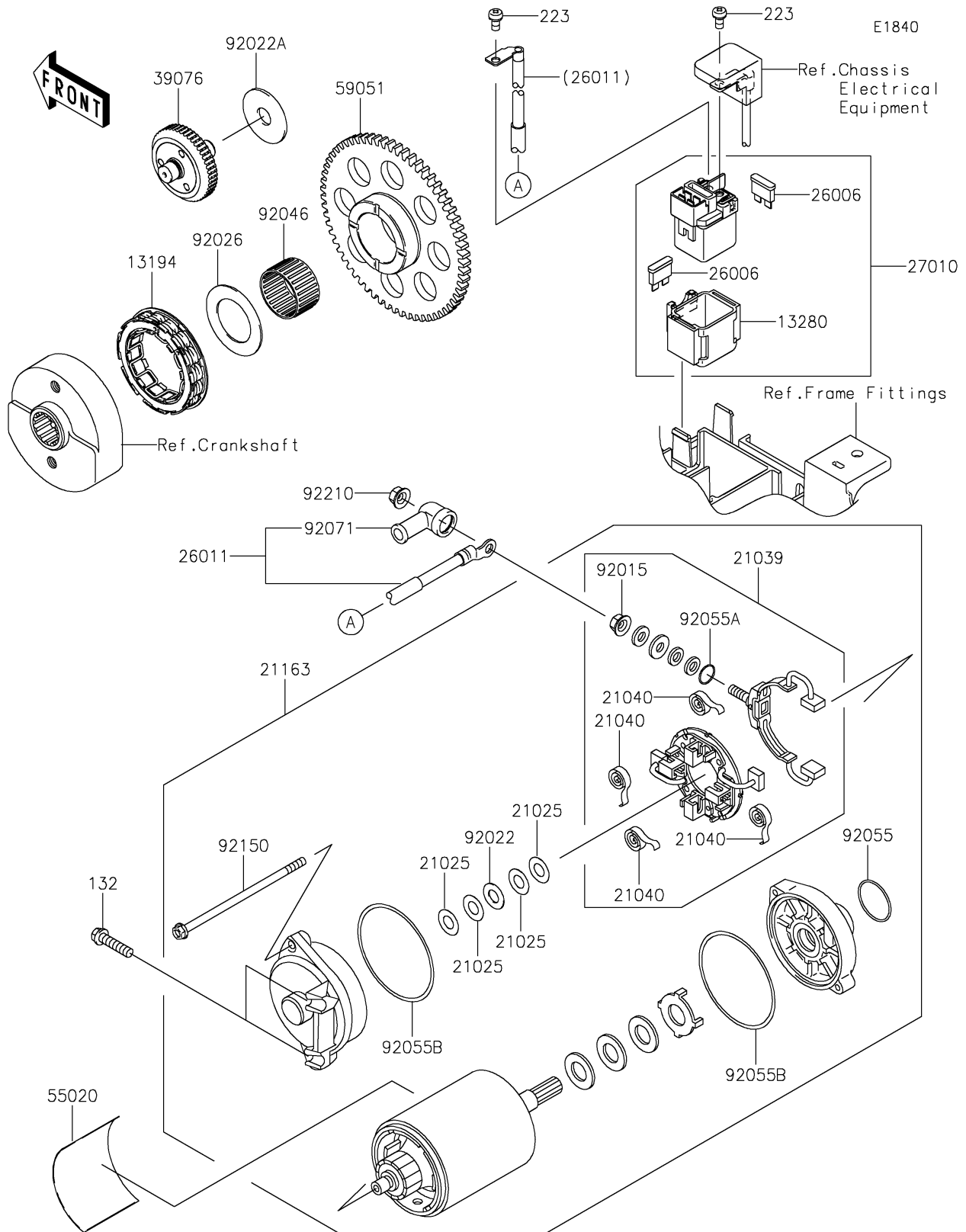


# 2025 Vulcan 900 Classic PARTS DIAGRAM

## Starter Motor



## 2025 Vulcan 900 Classic PARTS LIST

### Starter Motor

| ITEM NAME                              | PART NUMBER | QUANTITY |
|--|-------------|----------|
| CLUTCH-ONEWAY (Ref # 13194)            | 13194-0009  | 1        |
| HOLDER,MAGNETIC SWITCH (Ref # 13280)   | 13280-0822  | 1        |
| WASHER,9.1X18X0.2 (Ref # 21025)        | 21025-011   | AR       |
| BRUSH,CARBON (Ref # 21039)             | 21039-1060  | 1        |
| SPRING-BRUSH (Ref # 21040)             | 21040-1055  | 4        |
| STARTER-ELECTRIC (Ref # 21163)         | 21163-0066  | 1        |
| FUSE,BLADE,30A,GREEN (Ref # 26006)     | 26006-1006  | 2        |
| WIRE-LEAD,STARTER MOTOR (Ref # 26011)  | 26011-0126  | 1        |
| SWITCH,MAGNETIC (Ref # 27010)          | 27010-0793  | 1        |
| LIMITER (Ref # 39076)                  | 39076-0008  | 1        |
| GUARD,STARTER MOTER (Ref # 55020)      | 55020-1589  | 1        |
| GEAR-SPUR,63T (Ref # 59051)            | 59051-0060  | 1        |
| NUT,STARTER MOTOR (Ref # 92015)        | 92015-1476  | 1        |
| WASHER,9.1X18X0.8 (Ref # 92022)        | 92022-1132  | 1        |
| WASHER,12.3X38X2.0 (Ref # 92022A)      | 92022-1664  | 1        |
| SPACER,31X49.5X1.2 (Ref # 92026)       | 92026-1490  | 1        |
| BEARING-NEEDLE,K30X35X20 (Ref # 92046) | 92046-1171  | 1        |
| RING-O (Ref # 92055)                   | 92055-1276  | 1        |
| RING-O,4.5X2.0 (Ref # 92055A)          | 92055-1370  | 1        |
| RING-O,STARTER MOTOR (Ref # 92055B)    | 92055-1381  | 2        |
| GROMMET (Ref # 92071)                  | 92071-0024  | 1        |
| BOLT,STARTER MOTOR (Ref # 92150)       | 92150-1572  | 2        |
| NUT,6MM (Ref # 92210)                  | 92210-0188  | 1        |
| BOLT-FLANGED-SMALL,6X25 (Ref # 132)    | 132BA0625   | 2        |
| SCREW-PAN-WS-CROS,5X10 (Ref # 223)     | 223AA0510   | 2        |