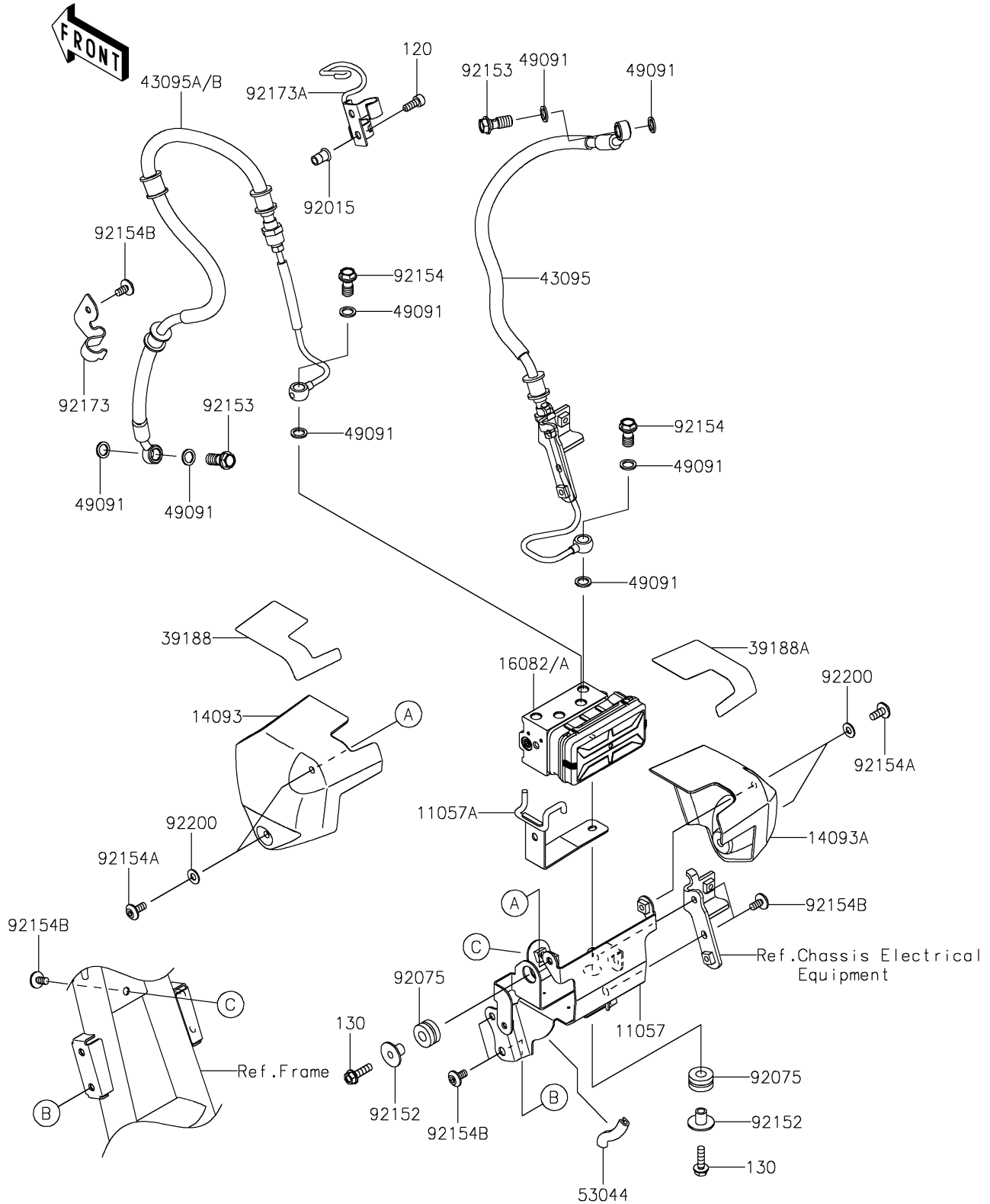


# 2025 W800 PARTS DIAGRAM

## Brake Piping

F2262



## 2025 W800 PARTS LIST

### Brake Piping

ITEM NAME	PART NUMBER	QUANTITY
BRACKET,ABS UNIT (Ref # 11057)	11057-1865	1
BRACKET,ABS UNIT (Ref # 11057A)	11057-2292	1
COVER,ABS UNIT,LH (Ref # 14093)	14093-0772	1
COVER,ABS UNIT,RH (Ref # 14093A)	14093-0773	1
PUMP-ASSY-OIL,ABS,WET (Ref # 16082)	16082-0811	1
PUMP-ASSY-OIL,ABS,WET (Ref # 16082A)	16082-0912	1
TAPE,ABS UNIT COVER,LH (Ref # 39188)	39188-0579	1
TAPE,ABS UNIT COVER,RH (Ref # 39188A)	39188-0580	1
HOSE-BRAKE,HU-FR M/C (Ref # 43095)	43095-1688	1
HOSE-BRAKE,HU-FR CALIPER (Ref # 43095B)	43095-1984	1
WASHER-SEAL,10.1X14.5X1.5 (Ref # 49091)	49091-0001	8
TRIM,L=50 (Ref # 53044)	53044-0699	1
NUT,POP,6MM,L=16.5 (Ref # 92015)	92015-1792	2
DAMPER (Ref # 92075)	92075-209	2
COLLAR,6.5X10X13.6 (Ref # 92152)	92152-2204	2
BOLT,OIL,L=23 (Ref # 92153)	92153-0627	2
BOLT,BANJO,10X19 (Ref # 92154)	92154-1554	2
BOLT,SOCKET,6X14 (Ref # 92154A)	92154-1807	4
BOLT,SOCKET,6X12 (Ref # 92154B)	92154-2706	6
CLAMP,BRAKE HOSE (Ref # 92173)	92173-2059	1
CLAMP,BRAKE HOSE (Ref # 92173A)	92173-2153	1
WASHER,6.5X14X1 (Ref # 92200)	92200-1388	4
BOLT-SOCKET,6X16 (Ref # 120)	120CB0616	2
BOLT-FLANGED,6X22 (Ref # 130)	130BA0622	2