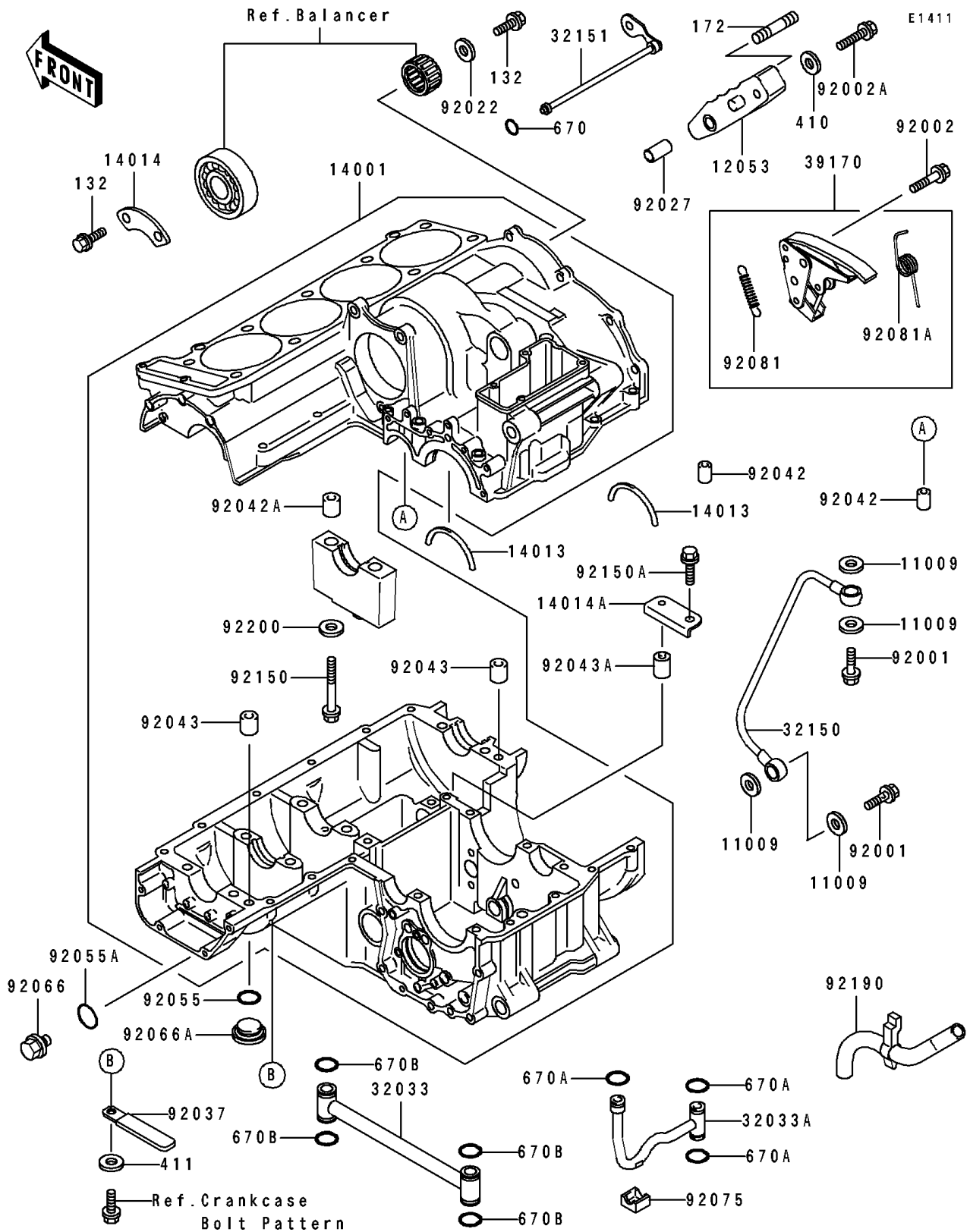


1996 GPZ 1100 ABS PARTS DIAGRAM

Crankcase



1996 GPZ 1100 ABS PARTS LIST

Crankcase

| ITEM NAME | PART NUMBER | QUANTITY |
|--|-------------|----------|
| GASKET,12.4X17X1.5 (Ref # 11009) | 11009-1376 | 4 |
| GUIDE-CHAIN (Ref # 12053) | 12053-1189 | 1 |
| SET-CRANKCASE (Ref # 14001) | 14001-1103 | 1 |
| RING-POSITION,T=1.98 (Ref # 14013) | 14013-1005 | 2 |
| PLATE-POSITION (Ref # 14014) | 14014-1056 | 1 |
| PLATE-POSITION (Ref # 14014A) | 14014-1101 | 1 |
| PIPE,MAIN GALLERY (Ref # 32033) | 32033-1201 | 1 |
| PIPE (Ref # 32033A) | 32033-1202 | 1 |
| PIPE (Ref # 32150) | 32150-1033 | 1 |
| PIPE,OIL (Ref # 32151) | 32151-1482 | 1 |
| TENSIONER-COMP (Ref # 39170) | 39170-1059 | 1 |
| BOLT,BANJO,12X23 (Ref # 92001) | 92001-1871 | 2 |
| BOLT,6X30 (Ref # 92002) | 92002-1534 | 2 |
| BOLT,6X25 (Ref # 92002A) | 92002-1609 | 1 |
| WASHER,6X19.5X2 (Ref # 92022) | 92022-1517 | 1 |
| COLLAR,6.2X8.1X15 (Ref # 92027) | 92027-1079 | 1 |
| CLAMP,WIRING HARNESS (Ref # 92037) | 92037-1539 | 1 |
| PIN,DOWEL,6X16 (Ref # 92042) | 92042-016 | 2 |
| PIN,DOWEL,12X14 (Ref # 92042A) | 92042-031 | 2 |
| PIN,DOWEL,10X14 (Ref # 92043) | 92043-1037 | 2 |
| PIN,BALANCER (Ref # 92043A) | 92043-1281 | 1 |
| RING-O,25.7X2.4 (Ref # 92055) | 92055-1136 | 1 |
| RING-O (Ref # 92055A) | 92055-1146 | 1 |
| PLUG,MAIN GALLERY,18X9,BLACK (Ref # 92066) | 92066-1096 | 1 |
| PLUG,25X8 (Ref # 92066A) | 92066-1161 | 1 |
| DAMPER,PIPE (Ref # 92075) | 92075-1785 | 1 |
| SPRING (Ref # 92081) | 92081-1668 | 1 |
| SPRING (Ref # 92081A) | 92081-1971 | 1 |
| BOLT,9X90 (Ref # 92150) | 92150-1364 | 2 |

1996 GPZ 1100 ABS PARTS LIST

Crankcase

| ITEM NAME | PART NUMBER | QUANTITY |
|------------------------------------|-------------|----------|
| BOLT,6X12 (Ref # 92150A) | 92150-1868 | 1 |
| TUBE,BREATHER (Ref # 92190) | 92190-1118 | 1 |
| WASHER,9.5X18X1.2 (Ref # 92200) | 92200-1037 | 2 |
| BOLT-FLANGED-SMALL (Ref # 132) | 132G0612 | 3 |
| BOLT-STUD,6X16 (Ref # 172) | 172G0616 | 1 |
| WASHER-PLAIN-SMALL,6MM (Ref # 410) | 410B0600 | 1 |
| WASHER-PLAIN,6MM,BLACK (Ref # 411) | 411F0600 | 1 |
| O RING,6MM (Ref # 670) | 670B1506 | 1 |
| O RING,9MM (Ref # 670A) | 670D1509 | 3 |
| O RING,16MM (Ref # 670B) | 670D2016 | 4 |