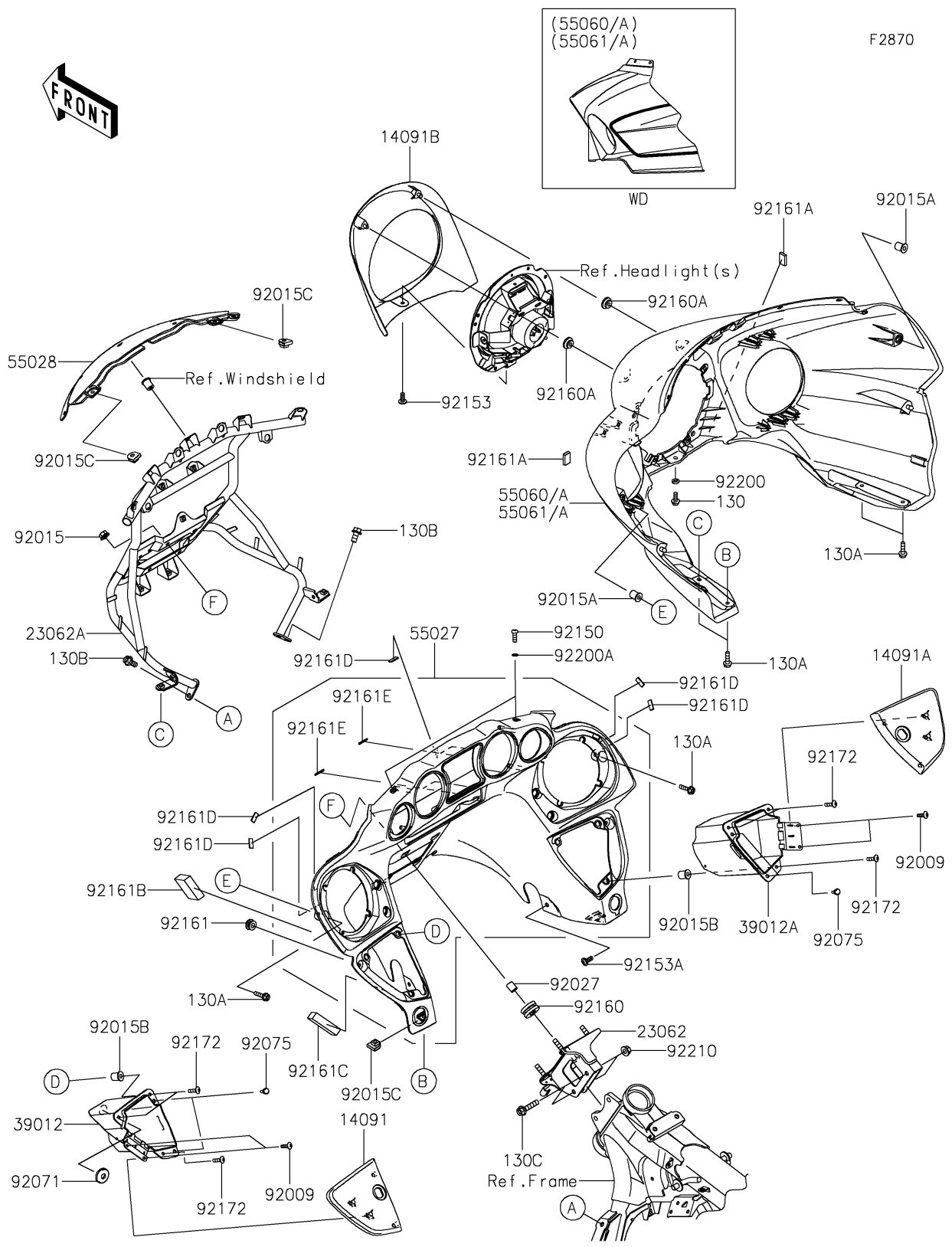


2024 VULCAN® 1700 VOYAGER® ABS PARTS DIAGRAM

Cowling



2024 VULCAN® 1700 VOYAGER® ABS PARTS LIST

Cowling

| ITEM NAME | PART NUMBER | QUANTITY |
|--|----------------|----------|
| COVER,STORAGE CASE,LH,F.BLACK (Ref # 14091) | 14091-0946-6Z | 1 |
| COVER,STORAGE CASE,RH,F.BLACK (Ref # 14091A) | 14091-0947-6Z | 1 |
| COVER,HEAD LAMP (Ref # 14091B) | 14091-0948 | 1 |
| BRACKET-COMP,HEAD PIPE (Ref # 23062) | 23062-0106 | 1 |
| BRACKET-COMP,COWLING (Ref # 23062A) | 23062-0720 | 1 |
| CASE-STORAGE,LH (Ref # 39012) | 39012-0027 | 1 |
| CASE-STORAGE,RH (Ref # 39012A) | 39012-0028 | 1 |
| COWLING-ASSY,UPP,INNER,BLACK (Ref # 55027) | 55027-0063-6Z | 1 |
| COWLING,CNT,F.BLACK (Ref # 55028) | 55028-0227-6Z | 1 |
| COWLING,UPP,OUTER,M.G.GRAY+GRY (Ref # 55061) | 55061-5248-69R | 1 |
| SCREW,TAPPING,5X10 (Ref # 92009) | 92009-1332 | 4 |
| NUT,FLANGED,8MM (Ref # 92015) | 92015-1406 | 4 |
| NUT (Ref # 92015A) | 92015-1700 | 2 |
| NUT,WELL,5MM (Ref # 92015B) | 92015-1757 | 6 |
| NUT,CLIP,6MM (Ref # 92015C) | 92015-1904 | 4 |
| COLLAR,8.8X12X14 (Ref # 92027) | 92027-012 | 4 |
| GROMMET,TAIL LAMP WIRE (Ref # 92071) | 92071-079 | 1 |
| DAMPER,6X10X15 (Ref # 92075) | 92075-1808 | 4 |
| BOLT,SOCKET,6X18 (Ref # 92150) | 92150-1553 | 2 |
| BOLT,SOCKET,6X16 (Ref # 92153) | 92153-0817 | 1 |
| BOLT,SOCKET,6X15 (Ref # 92153A) | 92153-1451 | 2 |
| DAMPER (Ref # 92160) | 92160-1007 | 4 |
| DAMPER (Ref # 92160A) | 92160-1613 | 2 |
| DAMPER (Ref # 92161) | 92161-0317 | 2 |
| DAMPER (Ref # 92161A) | 92161-0717 | 2 |
| DAMPER (Ref # 92161B) | 92161-0784 | 2 |
| DAMPER (Ref # 92161C) | 92161-0785 | 2 |
| DAMPER (Ref # 92161D) | 92161-0965 | 5 |
| DAMPER,3X25X0.3 (Ref # 92161E) | 92161-0996 | 4 |

2024 VULCAN® 1700 VOYAGER® ABS PARTS LIST

Cowling

| ITEM NAME | PART NUMBER | QUANTITY |
|--------------------------------|-------------|----------|
| SCREW,5X18 (Ref # 92172) | 92172-0428 | 6 |
| WASHER,6.5X12X2 (Ref # 92200) | 92200-0511 | 1 |
| WASHER,6.2X10X1 (Ref # 92200A) | 92200-1465 | 2 |
| NUT,FLANGED,8MM (Ref # 92210) | 92210-0004 | 2 |
| BOLT-FLANGED,6X16 (Ref # 130) | 130AA0616 | 1 |
| BOLT-FLANGED,6X22 (Ref # 130A) | 130BB0622 | 6 |
| BOLT-FLANGED,8X16 (Ref # 130B) | 130BB0816 | 2 |
| BOLT-FLANGED,8X35 (Ref # 130C) | 130BB0835 | 2 |