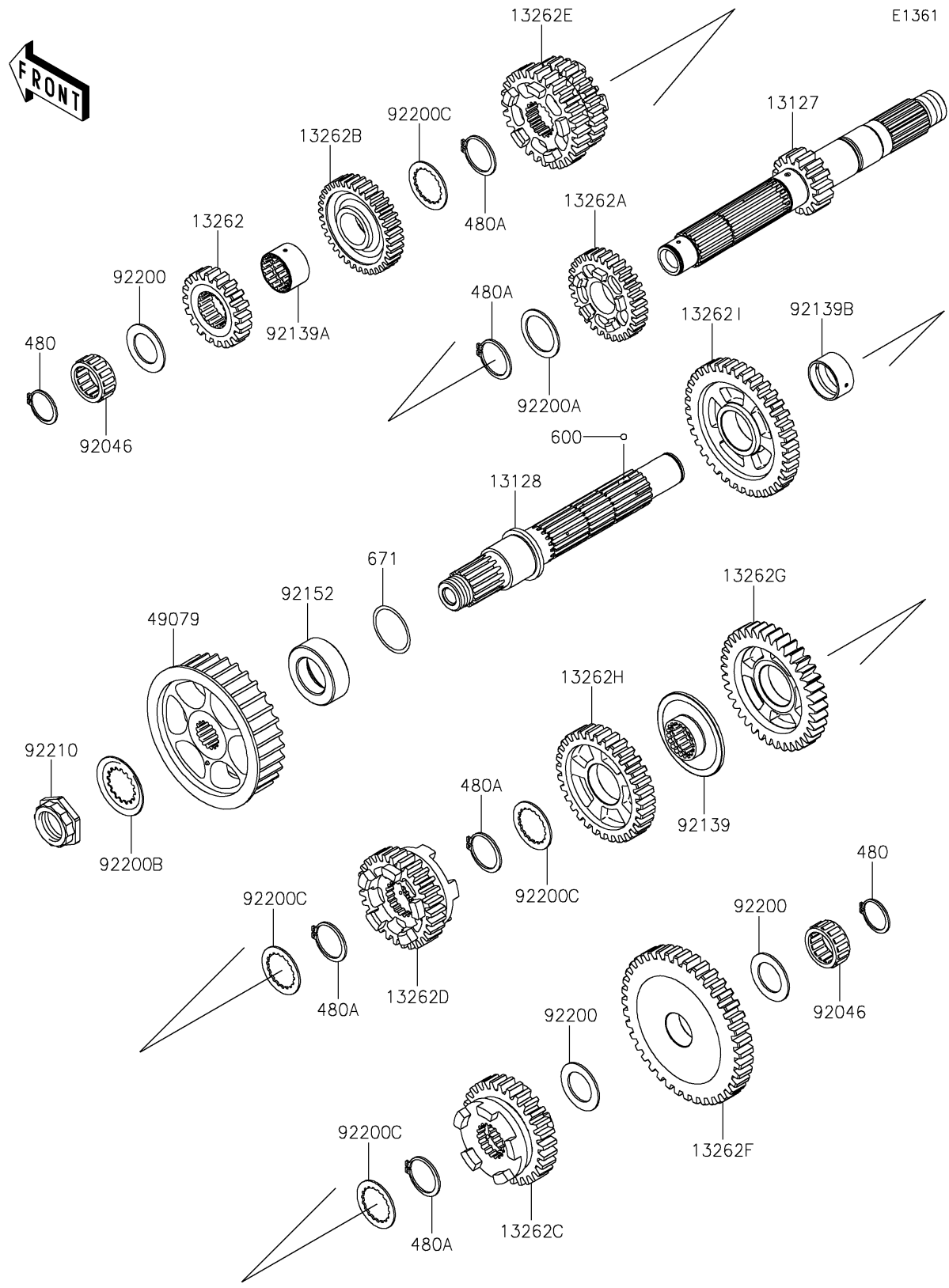


# 2023 VULCAN® 1700 VOYAGER® ABS PARTS DIAGRAM

Transmission



## 2023 VULCAN® 1700 VOYAGER® ABS PARTS LIST

### Transmission

| ITEM NAME                                    | PART NUMBER | QUANTITY |
|--|-------------|----------|
| SHAFT-TRANSMISSION INPUT (Ref # 13127)       | 13127-0083  | 1        |
| SHAFT-TRANSMISSION OUTPUT (Ref # 13128)      | 13128-0057  | 1        |
| GEAR,INPUT 2ND,20T (Ref # 13262)             | 13262-0603  | 1        |
| GEAR,INPUT 5TH,30T (Ref # 13262A)            | 13262-0605  | 1        |
| GEAR,INPUT 6TH,36T (Ref # 13262B)            | 13262-0606  | 1        |
| GEAR,OUTPUT 5TH,29T (Ref # 13262C)           | 13262-0611  | 1        |
| GEAR,OUTPUT 6TH,29T (Ref # 13262D)           | 13262-0612  | 1        |
| GEAR,INPUT 3RD&4TH,27T&28T (Ref # 13262E)    | 13262-0829  | 1        |
| GEAR,OUTPUT LOW,44T (Ref # 13262F)           | 13262-0831  | 1        |
| GEAR,OUTPUT 3RD,38T (Ref # 13262G)           | 13262-0832  | 1        |
| GEAR,OUTPUT 4TH,32T (Ref # 13262H)           | 13262-0833  | 1        |
| GEAR,OUTPUT 2ND,38T (Ref # 13262I)           | 13262-0834  | 1        |
| PULLEY-BELT (Ref # 49079)                    | 49079-0020  | 1        |
| BEARING-NEEDLE,KT 253515E02 C3 (Ref # 92046) | 92046-0007  | 2        |
| BUSHING,OUTPUT 3RD-4TH GEAR (Ref # 92139)    | 92139-0007  | 1        |
| BUSHING,INPUT TOP GEAR (Ref # 92139A)        | 92139-0236  | 1        |
| BUSHING,OUTPUT 2ND GEAR (Ref # 92139B)       | 92139-0237  | 1        |
| COLLAR,30X50X17.5 (Ref # 92152)              | 92152-0657  | 1        |
| WASHER,25.3X40X1.6 (Ref # 92200)             | 92200-0427  | 3        |
| WASHER,30.3X40X1.5 (Ref # 92200A)            | 92200-0428  | 1        |
| WASHER,31X50X1 (Ref # 92200B)                | 92200-0505  | 1        |
| WASHER,30.3X40X1.5 (Ref # 92200C)            | 92200-1381  | 4        |
| NUT,25MM (Ref # 92210)                       | 92210-0554  | 1        |
| CIRCLIP-TYPE-C,25MM (Ref # 480)              | 480J2500    | 2        |
| CIRCLIP (Ref # 480A)                         | 480J2900    | 5        |
| BALL-STEEL,5/32 (Ref # 600)                  | 600A0500    | 3        |
| O RING (Ref # 671)                           | 671D2535    | 1        |